

Viewmold provides high quality injection mold tooling

METRIC DOWEL PINS

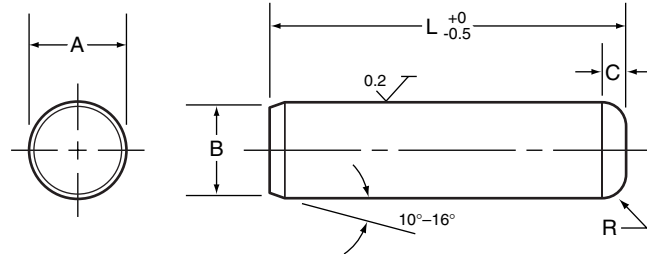
Hardened and Ground ■ Dimensions

Applicable or Similar Specifications: ASME B18.8.5M, ISO 8734 or DIN 6325.

Installation warning: Dowel pins should not be installed by striking or hammering. Wear safety glasses or shield when pressing chamfered point end first.

NOTES

- 1. Material:** ASME B18.8.5M-alloy steel
- 2. Hardness:** Rockwell C60 minimum (surface)
Rockwell C 50-58 (core)
- 3. Shear Stress:** Calculated values based on 1050 MPa.
- 4. Surface Finish:** 0.2 micrometer maximum



DIMENSIONS

APPLICATION DATA

| nominal size | A pin diameter | | B point diameter | | C crown height max. | R crown radius min. | calculated single shear strength | | recommended hole size | |
|--------------|----------------|--------|------------------|------|---------------------|---------------------|----------------------------------|---------|-----------------------|--------|
| | max. | min. | max. | min. | | | kN | pounds | max. | min. |
| 3 | 3.008 | 3.003 | 2.9 | 2.6 | 0.8 | 0.3 | 7.4 | 1,670 | 3.000 | 2.987 |
| 4 | 4.009 | 4.004 | 3.9 | 3.6 | 0.9 | 0.4 | 13.2 | 2,965 | 4.000 | 3.987 |
| 5 | 5.009 | 5.004 | 4.9 | 4.6 | 1.0 | 0.4 | 20.6 | 4,635 | 5.000 | 4.987 |
| 6 | 6.010 | 6.004 | 5.8 | 5.4 | 1.1 | 0.4 | 29.7 | 6,650 | 6.000 | 5.987 |
| 8 | 8.012 | 8.006 | 7.8 | 7.4 | 1.3 | 0.5 | 52.5 | 11,850 | 8.000 | 7.987 |
| 10 | 10.012 | 10.006 | 9.8 | 9.4 | 1.4 | 0.6 | 82.5 | 18,550 | 10.000 | 9.987 |
| 12 | 12.013 | 12.007 | 11.8 | 11.4 | 1.6 | 0.6 | 119.0 | 26,700 | 12.000 | 11.985 |
| 16 | 16.013 | 16.007 | 15.8 | 15.3 | 1.8 | 0.8 | 211.0 | 47,450 | 16.000 | 15.985 |
| 20 | 20.014 | 20.008 | 19.8 | 19.3 | 2.0 | 0.8 | 330.0 | 74,000 | 20.000 | 19.983 |
| 25 | 25.014 | 25.008 | 24.8 | 24.3 | 2.3 | 1.0 | 515.0 | 116,000 | 25.000 | 24.983 |

All dimensions in millimeters.