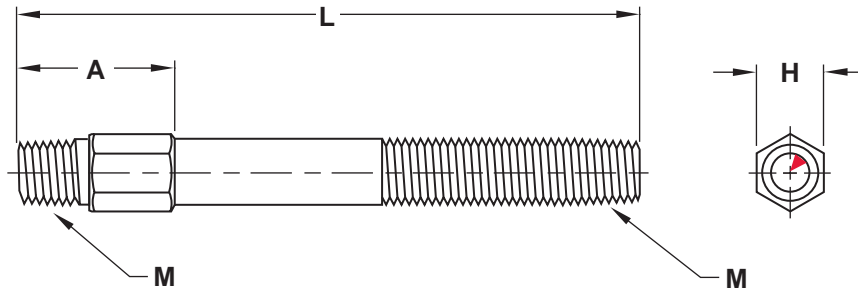


Adjustable Hex Nipples



M Brass

▶ CAD insertion point

Catalog Number	M Pipe NPT	A	H Hex Size	Available Overall Lengths (L)								
				2.5	4	5.5	7	8.5	10	11.5	13	
APN06	1/16	.68	.37	•	•	•	•	•	•	•	•	•
APN12	1/8	.75	.43	•	•	•	•	•	•	•	•	•
APN25	1/4	.87	.56	•	•	•	•	•	•	•	•	•
APN37	3/8	1.00	.68	•	•	•	•	•	•	•	•	•
APN50	1/2	1.37	.87	•	•	•	•	•	•	•	•	•

To Order:

Specify prefix and length. Ex. APN50L11.5

Alternative materials and configurations available:

For Hex Nipples manufactured from steel, add an "S" to the end of the catalog number. Ex. APN25L7S or APN50L4S

Hex Nipples can be ordered cut to any length, in an quantity. Specify the catalog number (for brass or stainless steel) with required length.

Ex. APN25L6.25 or APN37L5.75S

Pipe Nipples



M Brass or Galvanized Steel

Note: GPN06 is stainless steel.

Brass Cat. #	Steel Cat. #	Pipe Tap	Available Overall Lengths																
			Close*	1.5	2	2.5	3	3.5	4	4.5	5	5.5	6	7	8	9	10	11	12
BPN06	GPN06	1/16	•	•	•	•	•	•	•	•	•	•	•	•	•	•	•	•	•
BPN12	GPN12	1/8	•	•	•	•	•	•	•	•	•	•	•	•	•	•	•	•	•
BPN25	GPN25	1/4	•	•	•	•	•	•	•	•	•	•	•	•	•	•	•	•	•
BPN37	GPN37	3/8	•	•	•	•	•	•	•	•	•	•	•	•	•	•	•	•	•
BPN50	GPN50	1/2	•	•	•	•	•	•	•	•	•	•	•	•	•	•	•	•	•

To Order - Specify Prefix and length. Ex. BPN37CLOSE or BPN12L35

Pipe Nipples can be ordered cut to any length, in any quantity. To order, specify the prefix (BPN##) and required length.

Ex. BPN37L5.25 or GPN12L2.25

*Close is the shortest available nipple length.