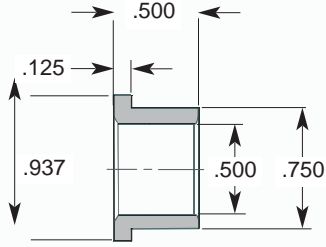
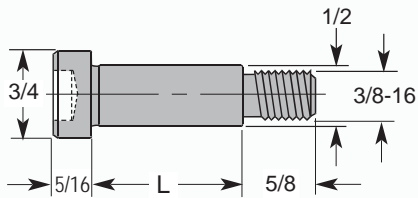


Oillite G.E. Bushing



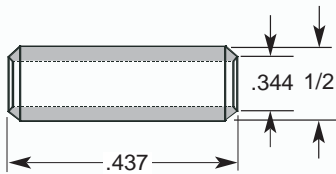
CATALOG NUMBER
FE-50-50

Socket Head Shoulder Screws



CATALOG NUMBER	L
FSB33-2500	2-12
FSB33-3250	3-1/4

Tubular Dowel



CATALOG NUMBER
TD5-437

Snap Rings



CATALOG NUMBER	PIN OR BUSHING DIA
HO-75	3/4
HO-87	7/8
HO-112	1-1/8

Sleeve Ejector Plate Sets

CATALOG NUMBER	W1	W2	L	R	H	R	D	T
1SE-0809-72	4.00	4.00	7.88	0.360	0.360	0.283	0.247	0.25

• Mild Steel

