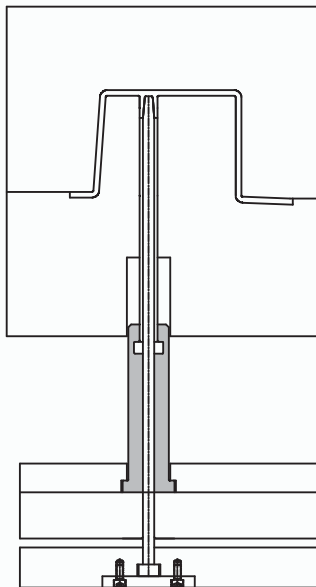
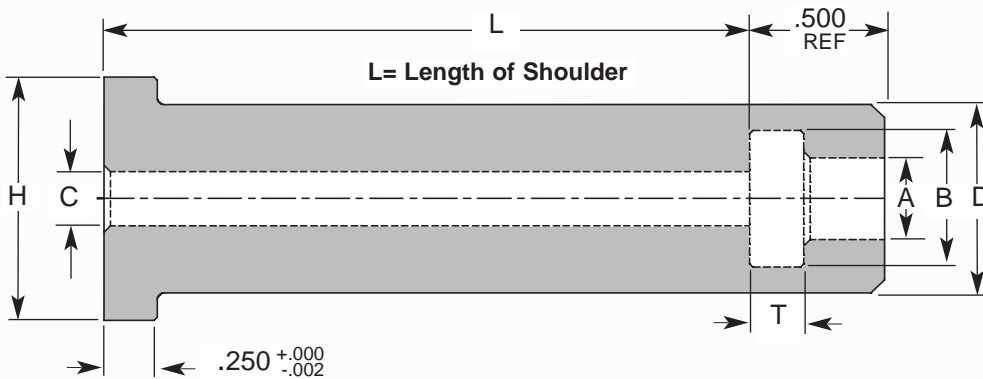


# Sleeve Extensions



## What's Important

- Lengthens Sleeves quickly and inexpensively
- Four Lengths for more versatility
- Special Lengths upon request

CATALOG NUMBER	NOMINAL SLEEVE I.D.	D +.000 -.002	A +.002 -.000	B +.005 -.000	T +.002 -.000	C +.03 -.00	H +.000 -.010	L = LENGTH +.005 -.000			
								2.00	2.50	3.00	3.50
SLX13-	3/32	.625	.193	.385	.188	.17	.875	•	•	•	
SLX15-	1/8	.625	.224	.416	.188	.17	.875	•	•	•	
SLX17-	5/32	.625	.255	.448	.188	.17	.875	•	•	•	•
SLX21-	3/16	.875	.318	.510	.251	.22	1.125	•	•	•	•
SLX23-	7/32	.875	.349	.570	.251	.25	1.125	•	•	•	•
SLX25-	1/4	.875	.380	.630	.251	.28	1.125	•	•	•	•
SLX29-	5/16	1.000	.443	.698	.251	.34	1.250	•	•	•	•
SLX33-	3/8	1.000	.505	.760	.251	.41	1.250	•	•	•	•

\* NOTE: Add length to end of part number i.e. SLX13-25

\*\*NOTE: L= Length of Shoulder.

