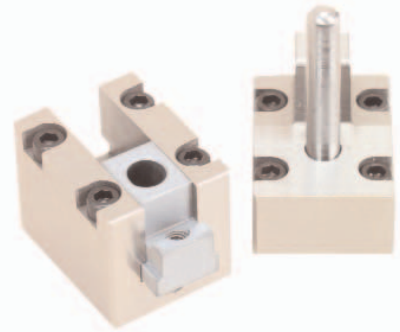
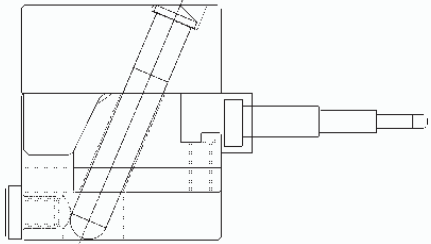


Ready Slide Assembly

Pre-Assembled, Ready-to-Ship

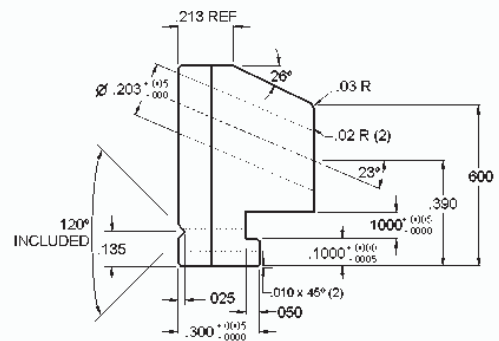
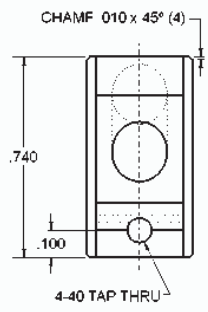
RSA-100 Series



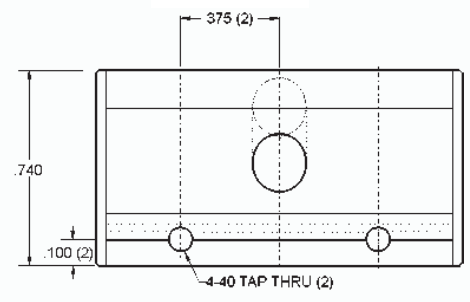
What's Important

- IN STOCK - ready to ship
- Reduces lead time
- Easy installation
- Mounting screws provided
- Units are finished with grind stock on overall width, bottom of guide shoe, and wedge angle
- Hardened and precision ground components are made with dissimilar steels and hardnesses
- The lubricious properties of the armorclad treatment combined with the qualities of graphitic tool steel (0-6) provide a dependable, smooth acting slide system

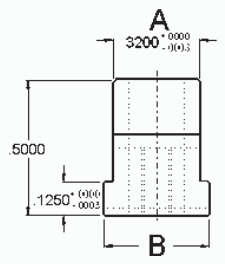
RSA-101



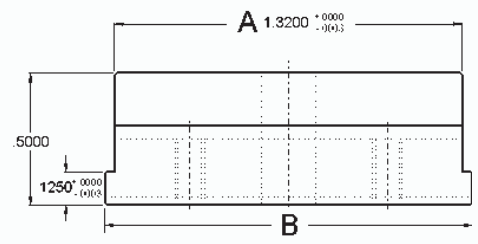
RSA-102



NOW WITH ARMORCLAD SURFACE TREATMENT



SLIDE
MAT'L H-13
HDN & GR.
RC 50-52
ARMORCLAD
SURFACE TREATMENT



NOTE: New design specifications exclusive to PCS

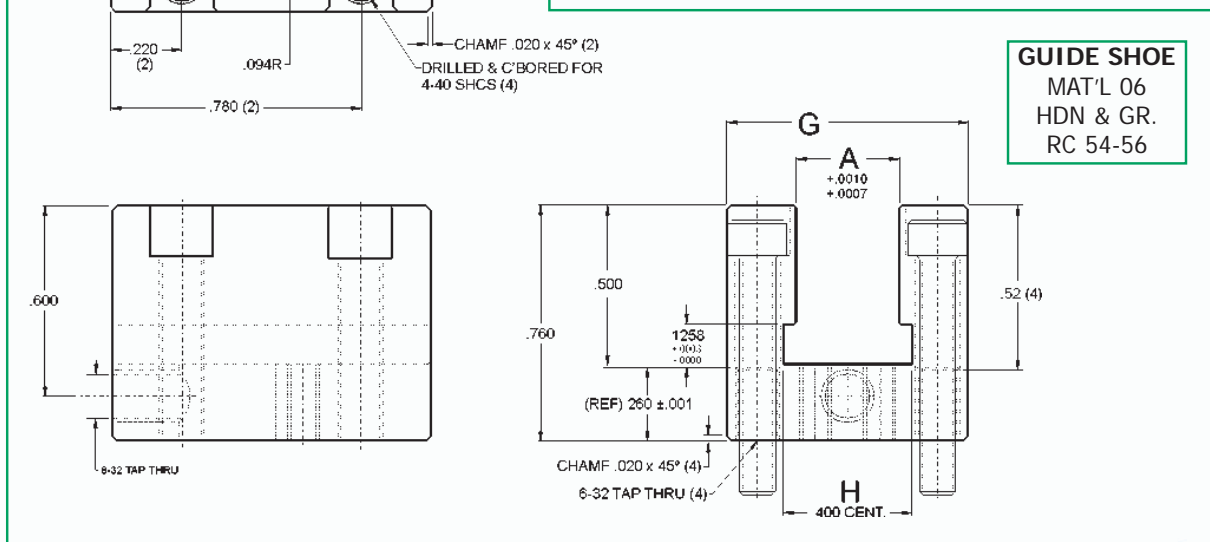
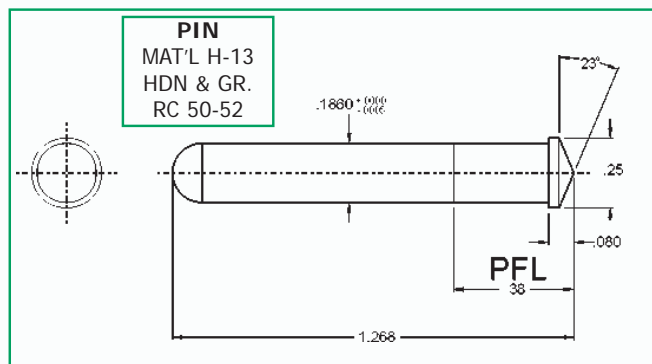
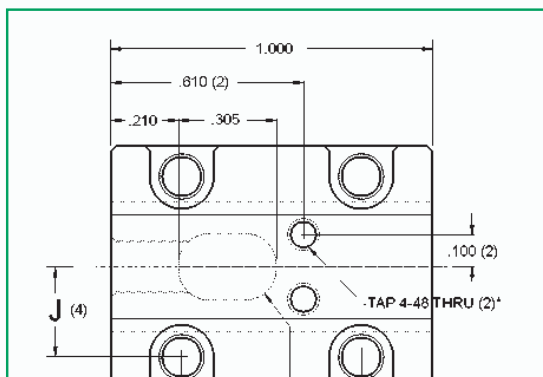
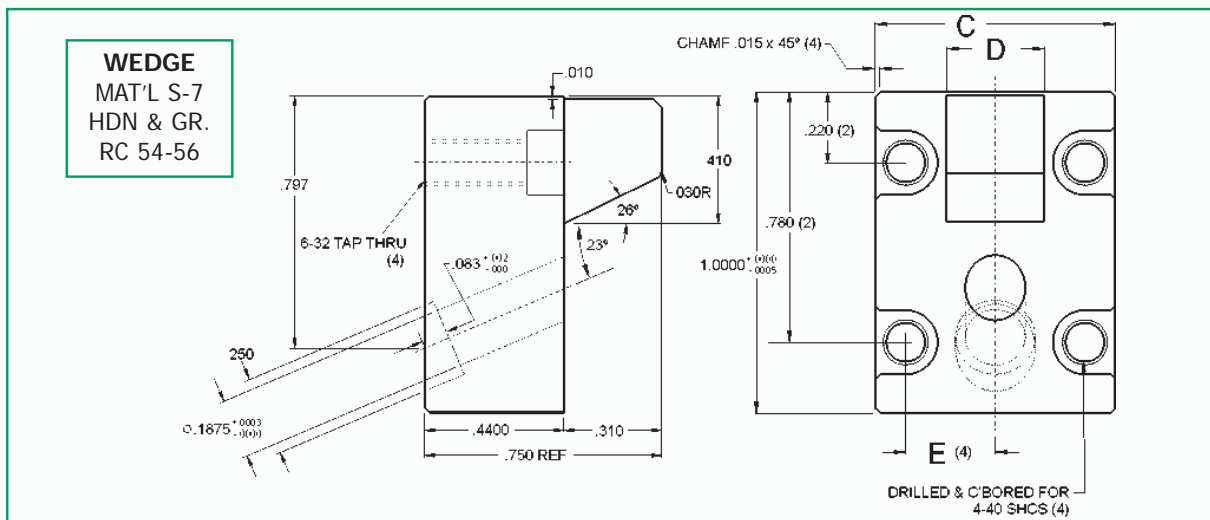
READY SLIDE ASSEMBLY					SLIDE		WEDGE			GUIDE SHOE		
CATALOG NUMBER	OVERALL WIDTH	OVERALL HEIGHT	MAX CAM STROKE	SLIDE HEIGHT	A	B	C	D	E	G	H	J
RSA-101	.760	1.190	.250	.500	.3200	.390	.760	.305	.280	.760	.400	.280
RSA-102	1.760	1.190	.250	.500	1.3200	1.390	1.760	1.305	.781	1.760	1.400	.781

To Order Individual Components: add first letter to end of catalog number (i.e. RSA-101 W, for a wedge)



Ready Slide Assembly

Pre-Assembled, Ready-to-Ship
RSA-100 Series



*4-48 (4) on RSA102 for spring plunger set screws (provided)