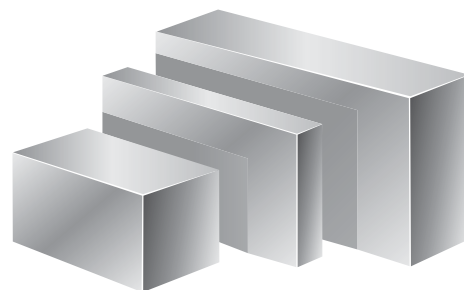


Die Blocks and Plates

7⁷/₈ through 13³/₈ wide – No. 5 Steel

D-M-E No. 5 steel is a thermal shock resistant, hotwork die steel (AISI-SAE H-13 type). Supplied fully annealed (approx. 200 Bhn.) for easy machinability, it can be subsequently heat treated to the desired hardness with a minimum of deformation.

Mainly used for die cast dies, it is also suitable for plastics molds with exceptional hardness or polishability requirements.



D-M-E No. 5 Steel meets or exceeds the acceptance criteria established by the NADCA as detailed in Technical Digest Number 01-80-01D.

Thickness, width and length are milled to approximately .060" oversized (.030" per side).

A	7 ⁷ / ₈ × 7 ⁷ / ₈	
	ITEM NUMBER	NET WT.
1 ³ / ₈	88-13	25
1 ¹ / ₂	88-17	33
2 ¹ / ₂	88-23	42
2 ¹ / ₂	88-27	51
3 ¹ / ₂	88-33	60
3 ¹ / ₂	88-37	69
4 ¹ / ₂	88-47	86

A	9 ⁷ / ₈ × 8"		9 ⁷ / ₈ × 11 ⁷ / ₈		9 ⁷ / ₈ × 16"		9 ⁷ / ₈ × 20"		A
	ITEM NUMBER	NET WT.	ITEM NUMBER	NET WT.	ITEM NUMBER	NET WT.	ITEM NUMBER	NET WT.	
1 ³ / ₈	108-13	31	1012-13	46	1016-13	62	1020-13	77	1 ³ / ₈
1 ¹ / ₂	108-17	42	1012-17	63	1016-17	84	1020-17	105	1 ¹ / ₂
2 ¹ / ₂	108-23	54	1012-23	79	1016-23	107	1020-23	133	2 ¹ / ₂
2 ¹ / ₂	108-27	65	1012-27	96	1016-27	129	1020-27	161	2 ¹ / ₂
3 ¹ / ₂	108-33	76	1012-33	113	1016-33	152	1020-33	189	3 ¹ / ₂
3 ¹ / ₂	108-37	87	1012-37	129	1016-37	174	1020-37	217	3 ¹ / ₂
4 ¹ / ₂	108-47	110	1012-47	162	1016-47	219	1020-47	273	4 ¹ / ₂
5 ¹ / ₂	108-57	132	1012-57	196	1016-57	263	1020-57	329	5 ¹ / ₂

A	10 ⁵ / ₈ × 12"		10 ⁵ / ₈ × 14"		10 ⁵ / ₈ × 18"		10 ⁵ / ₈ × 23 ¹ / ₂ "	
	ITEM NUMBER	NET WT.	ITEM NUMBER	NET WT.	ITEM NUMBER	NET WT.	ITEM NUMBER	NET WT.
1 ³ / ₈	1112-13	51	1114-13	60	1118-13	77	1123-13	100
1 ¹ / ₂	1112-17	70	1114-17	81	1118-17	104	1123-17	136
2 ¹ / ₂	1112-23	88	1114-23	103	1118-23	132	1123-23	172
2 ¹ / ₂	1112-27	107	1114-27	125	1118-27	160	1123-27	209
3 ¹ / ₂	1112-33	125	1114-33	146	1118-33	188	1123-33	245
3 ¹ / ₂	1112-37	144	1114-37	168	1118-37	215	1123-37	281
4 ¹ / ₂	1112-47	181	1114-47	211	1118-47	271	1123-47	353
5 ¹ / ₂	1112-57	218	1114-57	254	1118-57	326	1123-57	426

A	11 ¹ / ₈ × 12"		11 ¹ / ₈ × 15"	
	ITEM NUMBER	NET WT.	ITEM NUMBER	NET WT.
1 ³ / ₈	1212-13	56	1215-13	70
1 ¹ / ₂	1212-17	76	1215-17	95
2 ¹ / ₂	1212-23	96	1215-23	120
2 ¹ / ₂	1212-27	117	1215-27	146
3 ¹ / ₂	1212-33	137	1215-33	171
3 ¹ / ₂	1212-37	157	1215-37	196
4 ¹ / ₂	1212-47	197	1215-47	247
5 ¹ / ₂	1212-57	238	1215-57	297
7 ¹ / ₂	1212-77	318	1215-77	398

A	11 ¹ / ₈ × 20"		11 ¹ / ₈ × 23 ¹ / ₂ "	
	ITEM NUMBER	NET WT.	ITEM NUMBER	NET WT.
1 ³ / ₈	1220-13	93	1223-13	109
1 ¹ / ₂	1220-17	127	1223-17	149
2 ¹ / ₂	1220-23	160	1223-23	188
2 ¹ / ₂	1220-27	194	1223-27	228
3 ¹ / ₂	1220-33	228	1223-33	267
3 ¹ / ₂	1220-37	261	1223-37	307
4 ¹ / ₂	1220-47	329	1223-47	386
5 ¹ / ₂	1220-57	396	1223-57	465
7 ¹ / ₂	1220-77	530	1223-77	623

A	13 ³ / ₈ × 15"		13 ³ / ₈ × 18"		13 ³ / ₈ × 20 ³ / ₄ "		13 ³ / ₈ × 23 ¹ / ₂ "	
	ITEM NUMBER	NET WT.	ITEM NUMBER	NET WT.	ITEM NUMBER	NET WT.	ITEM NUMBER	NET WT.
1 ³ / ₈	1315-13	79	1318-13	94	1321-13	109	1323-13	123
1 ¹ / ₂	1315-17	107	1318-17	128	1321-17	148	1323-17	167
2 ¹ / ₂	1315-23	135	1318-23	162	1321-23	187	1323-23	212
2 ¹ / ₂	1315-27	164	1318-27	197	1321-27	227	1323-27	257
3 ¹ / ₂	1315-33	192	1318-33	231	1321-33	266	1323-33	301
3 ¹ / ₂	1315-37	221	1318-37	265	1321-37	305	1323-37	346
4 ¹ / ₂	1315-47	278	1318-47	333	1321-47	384	1323-47	435
5 ¹ / ₂	1315-57	334	1318-57	401	1321-57	462	1323-57	524
7 ¹ / ₂	1315-77	448	1318-77	538	1321-77	620	1323-77	702

WHEN ORDERING, PLEASE SPECIFY:

- Quantity & Item Number
- No. 5 Steel
- Method of Shipment

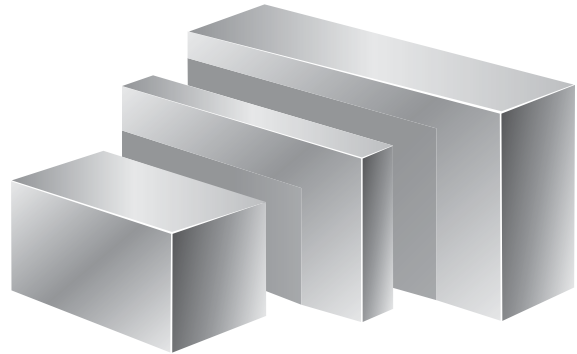
ALSO AVAILABLE:

- Rotary ground thickness
- Finish ground thickness and/or edges
- Standard width and thickness up to 12 feet long. For prices, contact D-M-E.

Die Blocks and Plates 15 7/8 through 23 3/4 wide – No. 5 Steel

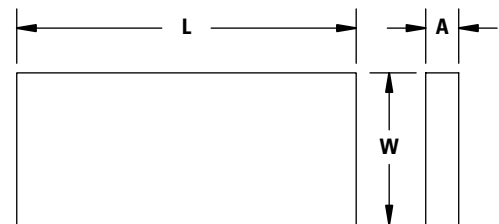
Mold Plates | Die Blocks and Plates 15 7/8 through 23 3/4 wide – No. 5 Steel

A	15 7/8 × 16"		15 7/8 × 20"		15 7/8 × 23 1/2"		15 7/8 × 26"	
	ITEM NUMBER	NET WT.	ITEM NUMBER	NET WT.	ITEM NUMBER	NET WT.	ITEM NUMBER	NET WT.
1%	1616-13	99	1620-13	124	1623-13	146	1626-13	161
1%	1616-17	135	1620-17	169	1623-17	199	1626-17	220
2%	1616-23	171	1620-23	214	1623-23	252	1626-23	278
2%	1616-27	207	1620-27	259	1623-27	304	1626-27	337
3%	1616-33	243	1620-33	304	1623-33	357	1626-33	395
3%	1616-37	279	1620-37	349	1623-37	410	1626-37	454
4%	1616-47	351	1620-47	439	1623-47	516	1626-47	571
5%	1616-57	423	1620-57	529	1623-57	621	1626-57	687
7%	1616-77	567	1620-77	709	1623-77	833	1626-77	921
8%	1616-87	639	1620-87	799	1623-87	938	1626-87	1038
9%	1616-97	711	1620-97	889	1623-97	1044	1626-97	1155
11%	1616-117	855	1620-117	1069	1623-117	1256	1626-117	1389



A	17 7/8 × 18"		17 7/8 × 20"		17 7/8 × 23 1/2"		17 7/8 × 26"		17 7/8 × 29 1/2"		17 7/8 × 35 1/2"		A
	ITEM NUMBER	NET WT.	ITEM NUMBER	NET WT.	ITEM NUMBER	NET WT.	ITEM NUMBER	NET WT.	ITEM NUMBER	NET WT.	ITEM NUMBER	NET WT.	
1%	1818-17	171	1820-17	190	1823-17	224	1826-17	247	1829-17	281	1835-17	338	1%
2%	1818-23	217	1820-23	241	1823-23	283	1826-23	313	1829-23	355	1835-23	427	2%
2%	1818-27	263	1820-27	292	1823-27	343	1826-27	379	1829-27	430	1835-27	517	2%
3%	1818-33	308	1820-33	342	1823-33	402	1826-33	445	1829-33	505	1835-33	607	3%
3%	1818-37	354	1820-37	393	1823-37	462	1826-37	511	1829-37	579	1835-37	697	3%
4%	1818-47	445	1820-47	494	1823-47	581	1826-47	642	1829-47	729	1835-47	877	4%
5%	1818-57	536	1820-57	596	1823-57	700	1826-57	774	1829-57	878	1835-57	1057	5%
7%	1818-77	718	1820-77	798	1823-77	938	1826-77	1037	1829-77	1177	1835-77	1416	7%
8%	1818-87	809	1820-87	899	1823-87	1057	1826-87	1169	1829-87	1326	1835-87	1596	8%
9%	1818-97	901	1820-97	1001	1823-97	1176	1826-97	1301	1829-97	1476	1835-97	1776	9%
11%	1818-117	1083	1820-117	1203	1823-117	1414	1826-117	1564	1829-117	1774	1835-117	2135	11%

A	19 1/2 × 23 3/4"		A	23 3/4 × 23 3/4"		23 3/4 × 29 1/2"		23 3/4 × 35 1/2"	
	ITEM NUMBER	NET WT.		ITEM NUMBER	NET WT.	ITEM NUMBER	NET WT.	ITEM NUMBER	NET WT.
2%	1924-23	312	2%	2424-23	380	2429-23	472	2435-23	568
2%	1924-27	378	2%	2424-27	460	2429-27	571	2435-27	687
3%	1924-33	443	3%	2424-33	540	2429-33	670	2435-33	807
3%	1924-37	509	3%	2424-37	620	2429-37	770	2435-37	926
4%	1924-47	640	4%	2424-47	780	2429-47	968	2435-47	1165
5%	1924-57	771	5%	2424-57	939	2429-57	1167	2435-57	1404
7%	1924-77	1034	7%	2424-77	1259	2429-77	1564	2435-77	1882
8%	1924-87	1165	8%	2424-87	1419	2429-87	1762	2435-87	2120
9%	1924-97	1296	9%	2424-97	1579	2429-97	1961	2435-97	2359
11%	1924-117	1559	11%	2424-117	1898	2429-117	2358	2435-117	2837



Thickness, width and length are milled to approximately .060" oversized (.030" per side).

WHEN ORDERING, PLEASE SPECIFY:

- Quantity & Item Number
- No. 5 Steel
- Method of Shipment

ALSO AVAILABLE:

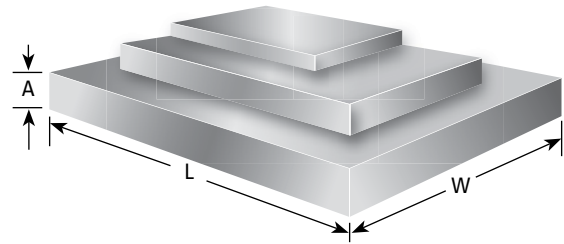
- Rotary ground thickness
- Finish ground thickness and/or edges
- Standard width and thickness up to 12 feet long. For prices, contact D-M-E.

Finish Ground Mold Plates • Rotary Ground Mold Plates 6", 8¹⁵/₁₆, 9" and 9⁷/₈ wide

Finish Ground Mold Plates

AVAILABLE IN:

D-M-E No.1, No. 2 or No. 3 Steel



Thickness (A) of plate is finish ground ±.001 Width and length are finished square and parallel.

A	6" x 7"	
	ITEM NUMBER	NET WT.
7/8	67-7	11
1%	67-13	17
1%	67-17	23
2%	67-23	29

A	6" x 9 ¹¹ / ₈ "	
	ITEM NUMBER	NET WT.
7/8	69-7	14
1%	69-13	22
1%	69-17	29

*No. 2 or No. 3 Steel only.

A	6" x 10 ⁵ / ₈ "		9" x 9 ¹¹ / ₈ "		A	8 ¹⁵ / ₁₆ x 11 ⁵ / ₈ "		9" x 11 ⁵ / ₈ "		9 ⁷ / ₈ x 7 ⁵ / ₈ "	
	ITEM NUMBER	NET WT.	ITEM NUMBER	NET WT.		ITEM NUMBER	NET WT.	ITEM NUMBER	NET WT.	ITEM NUMBER	NET WT.
7/8	611-7	17	99-7	21	7/8	912V-7	27	912M-7	27	108R-7	20
1%	611-13	26	99-13	32	1%	912V-13	42	912M-13	42	108R-13	31
1%	611-17	35	99-17	44	1%	912V-17	57	912M-17	57	108R-17	42
2%	611-23	44	*No. 2 or No. 3 Steel only.		2%	912V-23	72	912M-23	72	108R-23	53
2%	611-27	54			2%	912V-27	88	912M-27	88		
3%	611-33	63			3%	912V-33	103	912M-33	103		
3%	611-37	72			3%	912V-37	118	912M-37	118		
4%	611-47	91			4%	912V-47	148	912M-47	148		
5%	611-57	109			5%	912V-57	178	912M-57	178		

Rotary Ground Mold Plates

ALL "A" THICKNESSES AVAILABLE IN:

D-M-E No. 1, No. 2 or No. 3 Steel

Thickness (A) of plate is rotary ground. Width and length are milled.

TOLERANCES	
Thickness (A)	+0.015 to +0.020
Width (W) Nominal	+0.008 +0.005/+0.011
Length (L) Nominal	+0.008 +0.005/+0.011

A	6" x 7"	
	ITEM NUMBER	NET WT.
7/8	67-7RGM	11
1%	67-13RGM	17
1%	67-17RGM	23
2%	67-23RGM	29

A	6" x 9 ¹¹ / ₈ "	
	ITEM NUMBER	NET WT.
7/8	69-7RGM	14
1%	69-13RGM	22
1%	69-17RGM	29

*No. 2 or No. 3 Steel only.

A	6" x 10 ⁵ / ₈ "		9" x 9 ¹¹ / ₈ "		A	9" x 11 ⁵ / ₈ **		9 ⁷ / ₈ x 7 ⁵ / ₈ "	
	ITEM NUMBER	NET WT.	ITEM NUMBER	NET WT.		ITEM NUMBER	NET WT.	ITEM NUMBER	NET WT.
7/8	611-7RGM	17	99-7RGM	21	7/8	912-7RGM	27	108R-7RGM	20
1%	611-13RGM	26	99-13RGM	32	1%	912-13RGM	42	108R-13RGM	31
1%	611-17RGM	35	99-17RGM	44	1%	912-17RGM	57	108R-17RGM	42
2%	611-23RGM	44	*No. 2 or No. 3 Steel only.		2%	912-23RGM	72	108R-23RGM	53
2%	611-27RGM	54			2%	912-27RGM	88		
3%	611-33RGM	63			3%	912-33RGM	103		
3%	611-37RGM	72			3%	912-37RGM	118		
4%	611-47RGM	91			4%	912-47RGM	148		
5%	611-57RGM	109			5%	912-57RGM	178		

**Suitable for both Van Dorn or Moslo applications.

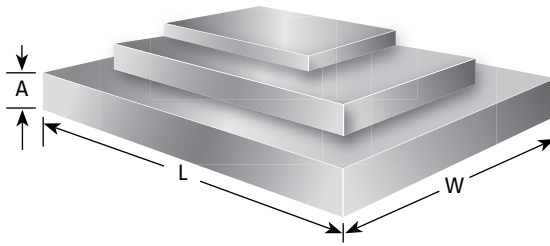
WHEN ORDERING, PLEASE SPECIFY:

- Quantity & Item Number
- No. 1, No. 2 or No. 3 Steel
- Method of Shipment

NOTE:

Standard width and thickness available in lengths up to 12 feet. For prices, contact D-M-E.

Finish Ground Mold Plates 7 7/8 through 11 7/8 wide



Thickness (A) of plate is finish ground ±.001
Width and length are finished square and parallel.

ALL "A" THICKNESSES AVAILABLE IN:

- D-M-E No. 1 Steel — SAE 1030 type
- D-M-E No. 2 Steel — AISI 4130 type, pre-heat treated (271-321 Bhn; 28-34 HRC)
- D-M-E No. 3 Steel — P-20 type, pre-heat treated (271-321 Bhn; 28-34 HRC)

PLATES WITH "A" THICKNESSES FROM 7/8 TO 2 7/8 ALSO AVAILABLE IN:

- D-M-E No. 7 Steel – Modified AISI 400 series stainless steel pre-heat treated (302-340 Bhn; 32-36 HRC)

THICKER PLATES IN D-M-E NO. 7 STEEL ARE AVAILABLE ON SPECIAL ORDER

A	7 7/8 × 7 7/8		7 7/8 × 11 7/8		A	9 7/8 × 8"		9 7/8 × 11 7/8	
	ITEM NUMBER	NET WT.	ITEM NUMBER	NET WT.		ITEM NUMBER	NET WT.	ITEM NUMBER	NET WT.
7/8	88-7	16	812-7	24	7/8	108-7	20	1012-7	30
1 1/8	88-13	25	812-13	37	1 1/8	108-13	31	1012-13	46
1 3/8	88-17	33	812-17	50	1 3/8	108-17	42	1012-17	63
2 1/8	88-23	42	812-23	63	2 1/8	108-23	54	1012-23	79
2 3/8	88-27	51	812-27	76	2 3/8	108-27	65	1012-27	96
3 1/8	88-33	60	812-33	89	3 1/8	108-33	76	1012-33	113
3 3/8	88-37	69	812-37	102	3 3/8	108-37	87	1012-37	129
4 1/8	88-47	86	812-47	129	4 1/8	108-47	110	1012-47	162
5 1/8	88-57	104	812-57	155	5 1/8	108-57	132	1012-57	196

A	9 7/8 16"		9 7/8 20"		9 7/8 23 3/4"		10 7/8 12"		10 7/8 14"		10 7/8 18"		10 7/8 23 1/2"		A
	ITEM NUMBER	NET WT.	ITEM NUMBER	NET WT.	ITEM NUMBER	NET WT.	ITEM NUMBER	NET WT.	ITEM NUMBER	NET WT.	ITEM NUMBER	NET WT.	ITEM NUMBER	NET WT.	
7/8	1016-7	40	1020-7	49	1024-7	59	1112-7	33	1114-7	38	1118-7	49	1123-7	64	7/8
1 1/8	1016-13	62	1020-13	77	1024-13	92	1112-13	51	1114-13	60	1118-13	77	1123-13	100	1 1/8
1 3/8	1016-17	84	1020-17	105	1024-17	125	1112-17	70	1114-17	81	1118-17	104	1123-17	136	1 3/8
2 1/8	1016-23	107	1020-23	133	1024-23	158	1112-23	88	1114-23	103	1118-23	132	1123-23	172	2 1/8
2 3/8	1016-27	129	1020-27	161	1024-27	192	1112-27	107	1114-27	125	1118-27	160	1123-27	209	2 3/8
3 1/8	1016-33	152	1020-33	189	1024-33	225	1112-33	125	1114-33	146	1118-33	188	1123-33	245	3 1/8
3 3/8	1016-37	174	1020-37	217	1024-37	258	1112-37	144	1114-37	168	1118-37	215	1123-37	281	3 3/8
4 1/8	1016-47	219	1020-47	273	1024-47	324	1112-47	181	1114-47	211	1118-47	271	1123-47	353	4 1/8
5 1/8	1016-57	263	1020-57	329	1024-57	391	1112-57	218	1114-57	254	1118-57	326	1123-57	426	5 1/8

A	11 7/8 12"		11 7/8 15"		11 7/8 17 1/2"		11 7/8 20"		11 7/8 23 1/2"		11 7/8 29 1/2"		A
	ITEM NUMBER	NET WT.	ITEM NUMBER	NET WT.	ITEM NUMBER	NET WT.	ITEM NUMBER	NET WT.	ITEM NUMBER	NET WT.	ITEM NUMBER	NET WT.	
7/8	1212-7	36	1215-7	45	1217-7	52	1220-7	59	1223-7	70	1229-7	87	7/8
1 1/8	1212-13	56	1215-13	70	1217-13	81	1220-13	93	1223-13	109	1229-13	137	1 1/8
1 3/8	1212-17	76	1215-17	95	1217-17	111	1220-17	127	1223-17	149	1229-17	187	1 3/8
2 1/8	1212-23	96	1215-23	120	1217-23	140	1220-23	160	1223-23	188	1229-23	236	2 1/8
2 3/8	1212-27	117	1215-27	146	1217-27	170	1220-27	194	1223-27	228	1229-27	286	2 3/8
3 1/8	1212-33	137	1215-33	171	1217-33	199	1220-33	228	1223-33	267	1229-33	335	3 1/8
3 3/8	1212-37	157	1215-37	196	1217-37	229	1220-37	261	1223-37	307	1229-37	385	3 3/8
4 1/8	1212-47	197	1215-47	247	1217-47	287	1220-47	329	1223-47	386	1229-47	484	4 1/8
5 1/8	1212-57	238	1215-57	297	1217-57	346	1220-57	396	1223-57	465	1229-57	584	5 1/8

WHEN ORDERING, PLEASE SPECIFY:

1. Quantity & Item Number
2. No. 1, No. 2, No. 3 or No. 7 Steel
3. Method of Shipment

NOTE:

Standard width and thickness available in lengths up to 12 feet.
For prices, contact D-M-E.

Rotary Ground Mold Plates 7⁷/₈ through 11⁷/₈ wide

TOLERANCES	88, 812, 108, 1012, 1016, 1112, 1114, 1118, 1212, 1215	1020, 1024, 1123, 1217, 1220, 1223, 1229
Thickness (A)	+0.015 to +0.020	+0.025 to +0.030
Width (W) Nominal +0.008	+0.005/+0.011	
Length (L) Nominal +0.008	+0.005/+0.011	

Thickness (A) of plate is rotary ground. Width and length are milled.

ALL "A" THICKNESSES AVAILABLE IN:

- D-M-E No. 1 Steel — SAE 1030 type
- D-M-E No. 2 Steel — AISI 4130 type, pre-heat treated (271-321 Bhn; 28-34 HRC)
- D-M-E No. 3 Steel — P-20 type, pre-heat treated (271-321 Bhn; 28-34 HRC)

PLATES WITH "A" THICKNESSES FROM 7⁷/₈ TO 2⁷/₈ ALSO AVAILABLE IN:

- D-M-E No. 7 Steel – Modified AISI 400 series stainless steel pre-heat treated (302-340 Bhn; 32-36 HRC)

THICKER PLATES IN D-M-E NO. 7 STEEL ARE AVAILABLE ON SPECIAL ORDER

A	7 ⁷ / ₈ × 7 ⁷ / ₈		7 ⁷ / ₈ × 11 ⁷ / ₈		9 ⁷ / ₈ × 8"		9 ⁷ / ₈ × 11 ⁷ / ₈	
	ITEM NUMBER	NET WT.	ITEM NUMBER	NET WT.	ITEM NUMBER	NET WT.	ITEM NUMBER	NET WT.
7 ⁷ / ₈	88-7RGM	16	812-7RGM	24	108-7RGM	20	1012-7RGM	30
1 ⁷ / ₈	88-13RGM	25	812-13RGM	37	108-13RGM	31	1012-13RGM	46
1 ¹ / ₈	88-17RGM	33	812-17RGM	50	108-17RGM	42	1012-17RGM	63
2 ⁷ / ₈	88-23RGM	42	812-23RGM	63	108-23RGM	54	1012-23RGM	79
2 ¹ / ₈	88-27RGM	51	812-27RGM	76	108-27RGM	65	1012-27RGM	96
3 ⁷ / ₈	88-33RGM	60	812-33RGM	89	108-33RGM	76	1012-33RGM	113
3 ¹ / ₈	88-37RGM	69	812-37RGM	102	108-37RGM	87	1012-37RGM	129
4 ⁷ / ₈	88-47RGM	86	812-47RGM	129	108-47RGM	110	1012-47RGM	162
5 ⁷ / ₈	88-57RGM	104	812-57RGM	155	108-57RGM	132	1012-57RGM	196

A	9 ⁷ / ₈ × 16"		9 ⁷ / ₈ × 20"		9 ⁷ / ₈ × 23 ³ / ₄ "		10 ⁷ / ₈ × 12"		10 ⁷ / ₈ × 14"		10 ⁷ / ₈ × 18"		10 ⁷ / ₈ × 23 ¹ / ₂ "		A
	ITEM NUMBER	NET WT.	ITEM NUMBER	NET WT.	ITEM NUMBER	NET WT.	ITEM NUMBER	NET WT.	ITEM NUMBER	NET WT.	ITEM NUMBER	NET WT.	ITEM NUMBER	NET WT.	
7 ⁷ / ₈	1016-7RGM	40	1020-7RGM	49	1024-7RGM	59	1112-7RGM	33	1114-7RGM	38	1118-7RGM	49	1123-7RGM	64	7 ⁷ / ₈
1 ⁷ / ₈	1016-13RGM	62	1020-13RGM	77	1024-13RGM	92	1112-13RGM	51	1114-13RGM	60	1118-13RGM	77	1123-13RGM	100	1 ⁷ / ₈
1 ¹ / ₈	1016-17RGM	84	1020-17RGM	105	1024-17RGM	125	1112-17RGM	70	1114-17RGM	81	1118-17RGM	104	1123-17RGM	136	1 ¹ / ₈
2 ⁷ / ₈	1016-23RGM	107	1020-23RGM	133	1024-23RGM	158	1112-23RGM	88	1114-23RGM	103	1118-23RGM	132	1123-23RGM	172	2 ⁷ / ₈
2 ¹ / ₈	1016-27RGM	129	1020-27RGM	161	1024-27RGM	192	1112-27RGM	107	1114-27RGM	124	1118-27RGM	160	1123-27RGM	209	2 ¹ / ₈
3 ⁷ / ₈	1016-33RGM	152	1020-33RGM	189	1024-33RGM	225	1112-33RGM	125	1114-33RGM	146	1118-33RGM	188	1123-33RGM	245	3 ⁷ / ₈
3 ¹ / ₈	1016-37RGM	174	1020-37RGM	217	1024-37RGM	258	1112-37RGM	144	1114-37RGM	168	1118-37RGM	215	1123-37RGM	281	3 ¹ / ₈
4 ⁷ / ₈	1016-47RGM	219	1020-47RGM	273	1024-47RGM	324	1112-47RGM	181	1114-47RGM	211	1118-47RGM	271	1123-47RGM	353	4 ⁷ / ₈
5 ⁷ / ₈	1016-57RGM	263	1020-57RGM	329	1024-57RGM	391	1112-57RGM	218	1114-57RGM	254	1118-57RGM	326	1123-57RGM	426	5 ⁷ / ₈

A	11 ⁷ / ₈ × 12"		11 ⁷ / ₈ × 15"		11 ⁷ / ₈ × 17 ¹ / ₂ "		11 ⁷ / ₈ × 20"		11 ⁷ / ₈ × 23 ¹ / ₂ "		11 ⁷ / ₈ × 29 ¹ / ₂ "		A
	ITEM NUMBER	NET WT.	ITEM NUMBER	NET WT.	ITEM NUMBER	NET WT.	ITEM NUMBER	NET WT.	ITEM NUMBER	NET WT.	ITEM NUMBER	NET WT.	
7 ⁷ / ₈	1212-7RGM	36	1215-7RGM	45	1217-7RGM	52	1220-7RGM	59	1223-7RGM	70	1229-7RGM	87	7 ⁷ / ₈
1 ⁷ / ₈	1212-13RGM	56	1215-13RGM	70	1217-13RGM	81	1220-13RGM	93	1223-13RGM	109	1229-13RGM	137	1 ⁷ / ₈
1 ¹ / ₈	1212-17RGM	76	1215-17RGM	95	1217-17RGM	111	1220-17RGM	127	1223-17RGM	149	1229-17RGM	187	1 ¹ / ₈
2 ⁷ / ₈	1212-23RGM	96	1215-23RGM	120	1217-23RGM	140	1220-23RGM	160	1223-23RGM	188	1229-23RGM	236	2 ⁷ / ₈
2 ¹ / ₈	1212-27RGM	117	1215-27RGM	146	1217-27RGM	170	1220-27RGM	194	1223-27RGM	228	1229-27RGM	286	2 ¹ / ₈
3 ⁷ / ₈	1212-33RGM	137	1215-33RGM	171	1217-33RGM	199	1220-33RGM	228	1223-33RGM	267	1229-33RGM	335	3 ⁷ / ₈
3 ¹ / ₈	1212-37RGM	157	1215-37RGM	196	1217-37RGM	229	1220-37RGM	261	1223-37RGM	307	1229-37RGM	385	3 ¹ / ₈
4 ⁷ / ₈	1212-47RGM	197	1215-47RGM	247	1217-47RGM	287	1220-47RGM	329	1223-47RGM	386	1229-47RGM	484	4 ⁷ / ₈
5 ⁷ / ₈	1212-57RGM	238	1215-57RGM	297	1217-57RGM	346	1220-57RGM	396	1223-57RGM	465	1229-57RGM	584	5 ⁷ / ₈

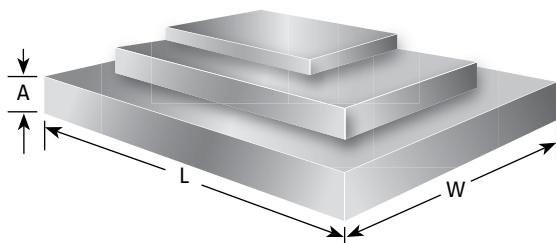
WHEN ORDERING, PLEASE SPECIFY:

1. Quantity & Item Number
2. No. 1, No. 2, No. 3 or No. 7 Steel
3. Method of Shipment

NOTE:

Standard width and thickness available in lengths up to 12 feet. For prices, contact D-M-E.

Finish Ground Mold Plates 13³/₈ through 15⁷/₈ wide



Thickness (A) of plate is finish ground ±.001. Width and length are finished square and parallel.

ALL "A" THICKNESSES AVAILABLE IN:

- D-M-E No. 1 Steel — SAE 1030 type
- D-M-E No. 2 Steel — AISI 4130 type, pre-heat treated (271-321 Bhn; 28-34 HRC)
- D-M-E No. 3 Steel — P-20 type, pre-heat treated (271-321 Bhn; 28-34 HRC)

PLATES WITH "A" THICKNESSES FROM 7/8 TO 2 7/8 ALSO AVAILABLE IN:

- D-M-E No. 7 Steel – Modified AISI 400 series stainless steel pre-heat treated (302-340 Bhn; 32-36 HRC)

THICKER PLATES IN D-M-E NO. 7 STEEL ARE AVAILABLE ON SPECIAL ORDER

A	13 ³ / ₈ × 15"		13 ³ / ₈ × 18"		13 ³ / ₈ × 20 ³ / ₄ "	
	ITEM NUMBER	NET WT.	ITEM NUMBER	NET WT.	ITEM NUMBER	NET WT.
7/8	1315-7	50	1318-7	60	1321-7	69
1%	1315-13	79	1318-13	94	1321-13	109
1 1/8	1315-17	107	1318-17	128	1321-17	148
2%	1315-23	135	1318-23	162	1321-23	187
2 1/8	1315-27	164	1318-27	197	1321-27	227
3%	1315-33	192	1318-33	231	1321-33	266
3 1/8	1315-37	221	1318-37	265	1321-37	305
4%	1315-47	278	1318-47	333	1321-47	384
5%	1315-57	334	1318-57	401	1321-57	462

A	13 ³ / ₈ × 23 ¹ / ₂ "		13 ³ / ₈ × 26"		13 ³ / ₈ × 29 ¹ / ₂ "		A
	ITEM NUMBER	NET WT.	ITEM NUMBER	NET WT.	ITEM NUMBER	NET WT.	
7/8	1323-7	78	1326-7	87	1329-7	98	7/8
1%	1323-13	123	1326-13	136	1329-13	154	1%
1 1/8	1323-17	167	1326-17	185	1329-17	210	1 1/8
2%	1323-23	212	1326-23	234	1329-23	266	2%
2 1/8	1323-27	256	1326-27	284	1329-27	322	2 1/8
3%	1323-33	301	1326-33	333	1329-33	378	3%
3 1/8	1323-37	346	1326-37	382	1329-37	434	3 1/8
4%	1323-47	435	1326-47	481	1329-47	545	4%
5%	1323-57	524	1326-57	579	1329-57	657	5%

A	14 ⁷ / ₈ × 17 ⁷ / ₈ "		14 ⁷ / ₈ × 23 ³ / ₄ "		14 ⁷ / ₈ × 29 ¹ / ₂ "		A
	ITEM NUMBER	NET WT.	ITEM NUMBER	NET WT.	ITEM NUMBER	NET WT.	
7/8	1518-7	66	1524-7	88	1529-7	109	7/8
1%	1518-13	104	1524-13	138	1529-13	171	1%
1 1/8	1518-17	142	1524-17	188	1529-17	233	1 1/8
2%	1518-23	179	1524-23	238	1529-23	296	2%
2 1/8	1518-27	217	1524-27	288	1529-27	358	2 1/8
3%	1518-33	255	1524-33	338	1529-33	420	3%
3 1/8	1518-37	292	1524-37	388	1529-37	482	3 1/8
4%	1518-47	368	1524-47	488	1529-47	606	4%
5%	1518-57	443	1524-57	588	1529-57	731	5%

A	15 ⁷ / ₈ × 16"		15 ⁷ / ₈ × 20"		15 ⁷ / ₈ × 23 ¹ / ₂ "		15 ⁷ / ₈ × 26"		15 ⁷ / ₈ × 29 ¹ / ₂ "		15 ⁷ / ₈ × 35 ¹ / ₂ "		A
	ITEM NUMBER	NET WT.	ITEM NUMBER	NET WT.	ITEM NUMBER	NET WT.	ITEM NUMBER	NET WT.	ITEM NUMBER	NET WT.	ITEM NUMBER	NET WT.	
7/8	1616-7	63	1620-7	79	1623-7	93	1626-7	103	1629-7	116	1635-7	140	7/8
1%	1616-13	99	1620-13	124	1623-13	146	1626-13	161	1629-13	183	1635-13	220	1%
1 1/8	1616-17	135	1620-17	169	1623-17	199	1626-17	220	1629-17	249	1635-17	300	1 1/8
2%	1616-23	171	1620-23	214	1623-23	252	1626-23	278	1629-23	315	1635-23	380	2%
2 1/8	1616-27	207	1620-27	259	1623-27	304	1626-27	337	1629-27	382	1635-27	459	2 1/8
3%	1616-33	243	1620-33	304	1623-33	357	1626-33	395	1629-33	448	1635-33	539	3%
3 1/8	1616-37	279	1620-37	349	1623-37	410	1626-37	454	1629-37	515	1635-37	619	3 1/8
4%	1616-47	351	1620-47	439	1623-47	516	1626-47	570	1629-47	647	1635-47	779	4%
5%	1616-57	423	1620-57	529	1623-57	621	1626-57	687	1629-57	780	1635-57	938	5%

WHEN ORDERING, PLEASE SPECIFY:

1. Quantity & Item Number
2. No. 1, No. 2, No. 3 or No. 7 Steel
3. Method of Shipment

NOTE:

Standard width and thickness available in lengths up to 12 feet. For prices, contact D-M-E.

Rotary Ground Mold Plates

13³/₈ through 15⁷/₈ wide

Mold Plate Size	TOLERANCES	
	1315, 1318, 1518	1321, 1323, 1326, 1329, 1524, 1529, 1616, 1620, 1623, 1626, 1629, 1635
Thickness (A)	+0.015 to +0.020	+0.025 to +0.030
Width (W)	+0.005/+0.011	
Length (L)	+0.005/+0.011	

A	13 ³ / ₈ × 15"		13 ³ / ₈ × 18"		13 ³ / ₈ × 20 ³ / ₄ "	
	ITEM NUMBER	NET WT.	ITEM NUMBER	NET WT.	ITEM NUMBER	NET WT.
⁷ / ₈	1315-7RGM	50	1318-7RGM	60	1321-7RGM	69
1 ¹ / ₈	1315-13RGM	79	1318-13RGM	94	1321-13RGM	109
1 ¹ / ₂	1315-17RGM	107	1318-17RGM	128	1321-17RGM	148
2 ¹ / ₈	1315-23RGM	135	1318-23RGM	162	1321-23RGM	187
2 ¹ / ₂	1315-27RGM	164	1318-27RGM	197	1321-27RGM	227
3 ¹ / ₈	1315-33RGM	192	1318-33RGM	231	1321-33RGM	266
3 ¹ / ₂	1315-37RGM	221	1318-37RGM	265	1321-37RGM	305
4 ¹ / ₈	1315-47RGM	278	1318-47RGM	333	1321-47RGM	384
5 ¹ / ₈	1315-57RGM	334	1318-57RGM	401	1321-57RGM	462

A	13 ³ / ₈ × 23 ¹ / ₂ "		13 ³ / ₈ × 26"		13 ³ / ₈ × 29 ¹ / ₂ "		A
	ITEM NUMBER	NET WT.	ITEM NUMBER	NET WT.	ITEM NUMBER	NET WT.	
⁷ / ₈	1323-7RGM	78	1326-7RGM	87	1329-7RGM	98	⁷ / ₈
1 ¹ / ₈	1323-13RGM	123	1326-13RGM	136	1329-13RGM	154	1 ¹ / ₈
1 ¹ / ₂	1323-17RGM	167	1326-17RGM	185	1329-17RGM	210	1 ¹ / ₂
2 ¹ / ₈	1323-23RGM	212	1326-23RGM	234	1329-23RGM	266	2 ¹ / ₈
2 ¹ / ₂	1323-27RGM	256	1326-27RGM	284	1329-27RGM	322	2 ¹ / ₂
3 ¹ / ₈	1323-33RGM	301	1326-33RGM	333	1329-33RGM	378	3 ¹ / ₈
3 ¹ / ₂	1323-37RGM	346	1326-37RGM	382	1329-37RGM	434	3 ¹ / ₂
4 ¹ / ₈	1323-47RGM	435	1326-47RGM	481	1329-47RGM	545	4 ¹ / ₈
5 ¹ / ₈	1323-57RGM	524	1326-57RGM	579	1329-57RGM	657	5 ¹ / ₈

Thickness (A) of plate is rotary ground. Width and length are milled.

ALL "A" THICKNESSES AVAILABLE IN:

- D-M-E No. 1 Steel — SAE 1030 type
- D-M-E No. 2 Steel — AISI 4130 type, pre-heat treated (271-321 Bhn; 28-34 HRC)
- D-M-E No. 3 Steel — P-20 type, pre-heat treated (271-321 Bhn; 28-34 HRC)

PLATES WITH "A" THICKNESSES FROM ⁷/₈ TO 2⁷/₈ ALSO AVAILABLE IN:

- D-M-E No. 7 Steel – Modified AISI 400 series stainless steel pre-heat treated (302-340 Bhn; 32-36 HRC)

THICKER PLATES IN D-M-E NO. 7 STEEL ARE AVAILABLE ON SPECIAL ORDER

A	14 ⁷ / ₈ × 17 ⁷ / ₈ "		14 ⁷ / ₈ × 23 ³ / ₄ "		14 ⁷ / ₈ × 29"		A
	ITEM NUMBER	NET WT.	ITEM NUMBER	NET WT.	ITEM NUMBER	NET WT.	
⁷ / ₈	1518-7RGM	66	1524-7RGM	88	1529-7RGM	109	⁷ / ₈
1 ¹ / ₈	1518-13RGM	104	1524-13RGM	138	1529-13RGM	171	1 ¹ / ₈
1 ¹ / ₂	1518-17RGM	142	1524-17RGM	188	1529-17RGM	233	1 ¹ / ₂
2 ¹ / ₈	1518-23RGM	179	1524-23RGM	238	1529-23RGM	296	2 ¹ / ₈
2 ¹ / ₂	1518-27RGM	217	1524-27RGM	288	1529-27RGM	358	2 ¹ / ₂
3 ¹ / ₈	1518-33RGM	255	1524-33RGM	338	1529-33RGM	420	3 ¹ / ₈
3 ¹ / ₂	1518-37RGM	292	1524-37RGM	388	1529-37RGM	482	3 ¹ / ₂
4 ¹ / ₈	1518-47RGM	368	1524-47RGM	488	1529-47RGM	606	4 ¹ / ₈
5 ¹ / ₈	1518-57RGM	443	1524-57RGM	588	1529-57RGM	731	5 ¹ / ₈

A	15 ⁷ / ₈ × 16"		15 ⁷ / ₈ × 20"		15 ⁷ / ₈ × 23 ¹ / ₂ "		15 ⁷ / ₈ × 26"		15 ⁷ / ₈ × 29 ¹ / ₂ "		15 ⁷ / ₈ × 35 ¹ / ₂ "		A
	ITEM NUMBER	NET WT.	ITEM NUMBER	NET WT.	ITEM NUMBER	NET WT.	ITEM NUMBER	NET WT.	ITEM NUMBER	NET WT.	ITEM NUMBER	NET WT.	
⁷ / ₈	1616-7RGM	63	1620-7RGM	79	1623-7RGM	93	1626-7RGM	103	1629-7RGM	116	1635-7RGM	140	⁷ / ₈
1 ¹ / ₈	1616-13RGM	99	1620-13RGM	124	1623-13RGM	146	1626-13RGM	161	1629-13RGM	183	1635-13RGM	220	1 ¹ / ₈
1 ¹ / ₂	1616-17RGM	135	1620-17RGM	169	1623-17RGM	199	1626-17RGM	220	1629-17RGM	249	1635-17RGM	300	1 ¹ / ₂
2 ¹ / ₈	1616-23RGM	171	1620-23RGM	214	1623-23RGM	252	1626-23RGM	278	1629-23RGM	315	1635-23RGM	380	2 ¹ / ₈
2 ¹ / ₂	1616-27RGM	207	1620-27RGM	259	1623-27RGM	304	1626-27RGM	337	1629-27RGM	382	1635-27RGM	459	2 ¹ / ₂
3 ¹ / ₈	1616-33RGM	243	1620-33RGM	304	1623-33RGM	357	1626-33RGM	395	1629-33RGM	448	1635-33RGM	539	3 ¹ / ₈
3 ¹ / ₂	1616-37RGM	279	1620-37RGM	349	1623-37RGM	410	1626-37RGM	454	1629-37RGM	515	1635-37RGM	619	3 ¹ / ₂
4 ¹ / ₈	1616-47RGM	351	1620-47RGM	439	1623-47RGM	516	1626-47RGM	570	1629-47RGM	647	1635-47RGM	779	4 ¹ / ₈
5 ¹ / ₈	1616-57RGM	423	1620-57RGM	529	1623-57RGM	621	1626-57RGM	687	1629-57RGM	780	1635-57RGM	938	5 ¹ / ₈

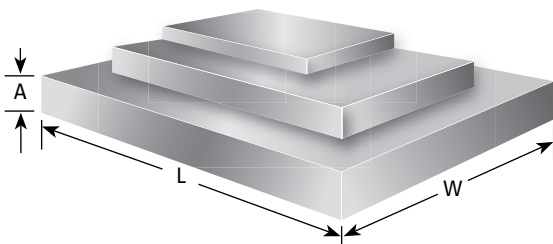
WHEN ORDERING, PLEASE SPECIFY:

1. Quantity & Item Number
2. No. 1, No. 2, No. 3 or No. 7 Steel
3. Method of Shipment

NOTE:

Standard width and thickness available in lengths up to 12 feet. For prices, contact D-M-E.

Finish Ground Mold Plates 16½ through 23¾ wide



Thickness (A) of plate is finish ground ±.001. Width and length are finished square and parallel.

ALL "A" THICKNESSES AVAILABLE IN:

- D-M-E No. 1 Steel — SAE 1030 type
- D-M-E No. 2 Steel — AISI 4130 type, pre-heat treated (271-321 Bhn; 28-34 HRC)
- D-M-E No. 3 Steel — P-20 type, pre-heat treated (271-321 Bhn; 28-34 HRC)

PLATES WITH "A" THICKNESSES FROM 7/8 TO 27/8 ALSO AVAILABLE IN:

- D-M-E No. 7 Steel – Modified AISI 400 series stainless steel pre-heat treated (302-340 Bhn; 32-36 HRC)

THICKER PLATES IN D-M-E NO. 7 STEEL ARE AVAILABLE ON SPECIAL ORDER

A	16½ × 23¾		16½ × 29½		A
	ITEM NUMBER	NET WT.	ITEM NUMBER	NET WT.	
¾	1724-7	98	1729-7	121	¾
1%	1724-13	153	1729-13	190	1%
1½	1724-17	209	1729-17	259	1½
2%	1724-23	264	1729-23	328	2%
2½	1724-27	320	1729-27	397	2½
3%	1724-33	375	1729-33	466	3%
3½	1724-37	431	1729-37	535	3½
4%	1724-47	542	1729-47	673	4%
5%	1724-57	653	1729-57	811	5%

A	17⅞ × 18"		17⅞ × 20"		17⅞ × 23½		17⅞ × 26"		17⅞ × 29½		17⅞ × 35½		A
	ITEM NUMBER	NET WT.	ITEM NUMBER	NET WT.	ITEM NUMBER	NET WT.	ITEM NUMBER	NET WT.	ITEM NUMBER	NET WT.	ITEM NUMBER	NET WT.	
¾	1818-7	80	1820-7	89	1823-7	105	1826-7	116	1829-7	131	1835-7	158	¾
1%	1818-13	126	1820-13	140	1823-13	164	1826-13	182	1829-13	206	1835-13	248	1%
1½	1818-17	171	1820-17	190	1823-17	224	1826-17	247	1829-17	281	1835-17	338	1½
2%	1818-23	217	1820-23	241	1823-23	283	1826-23	313	1829-23	355	1835-23	427	2%
2½	1818-27	263	1820-27	292	1823-27	343	1826-27	379	1829-27	430	1835-27	517	2½
3%	1818-33	308	1820-33	342	1823-33	402	1826-33	445	1829-33	505	1835-33	607	3%
3½	1818-37	354	1820-37	393	1823-37	462	1826-37	511	1829-37	579	1835-37	697	3½
4%	1818-47	445	1820-47	494	1823-47	581	1826-47	642	1829-47	729	1835-47	877	4%
5%	1818-57	536	1820-57	596	1823-57	700	1826-57	774	1829-57	878	1835-57	1057	5%

A	19½ × 23¾		19½ × 29½		19½ × 35½		A
	ITEM NUMBER	NET WT.	ITEM NUMBER	NET WT.	ITEM NUMBER	NET WT.	
¾	1924-7	115	1929-7	143	1935-7	172	¾
1%	1924-13	181	1929-13	224	1935-13	270	1%
1½	1924-17	246	1929-17	306	1935-17	368	1½
2%	1924-23	312	1929-23	387	1935-23	466	2%
2½	1924-27	378	1929-27	469	1935-27	564	2½
3%	1924-33	443	1929-33	550	1935-33	662	3%
3½	1924-37	509	1929-37	632	1935-37	760	3½
4%	1924-47	640	1929-47	795	1935-47	956	4%
5%	1924-57	771	1929-57	958	1935-57	1153	5%

A	23¾ × 23¾		23¾ × 29½		23¾ × 35½		A
	ITEM NUMBER	NET WT.	ITEM NUMBER	NET WT.	ITEM NUMBER	NET WT.	
¾	2424-7	140	2429-7	174	2435-7	209	¾
1%	2424-13	220	2429-13	273	2435-13	329	1%
1½	2424-17	300	2429-17	373	2435-17	448	1½
2%	2424-23	380	2429-23	472	2435-23	568	2%
2½	2424-27	460	2429-27	571	2435-27	687	2½
3%	2424-33	540	2429-33	670	2435-33	807	3%
3½	2424-37	620	2429-37	770	2435-37	926	3½
4%	2424-47	779	2429-47	968	2435-47	1165	4%
5%	2424-57	939	2429-57	1167	2435-57	1404	5%

WHEN ORDERING, PLEASE SPECIFY:

1. Quantity & Item Number
2. No. 1, No. 2, No. 3 or No. 7 Steel
3. Method of Shipment

NOTE:

Standard width and thickness available in lengths up to 12 feet. For prices, contact D-M-E.

Rotary Ground Mold Plates 16½ through 23¾ wide

Mold Plate Size	TOLERANCES	
	1315, 1318, 1518	1321, 1323, 1326, 1329, 1524, 1529, 1616, 1620, 1623, 1626, 1629, 1635
Thickness (A)	+0.015 to +0.020	+0.025 to +0.030
Width (W)	+0.005/+0.011	
Length (L)	+0.005/+0.011	

Thickness (A) of plate is rotary ground. Width and length are milled.

ALL "A" THICKNESSES AVAILABLE IN:

- D-M-E No. 1 Steel — SAE 1030 type
- D-M-E No. 2 Steel — AISI 4130 type, pre-heat treated (271-321 Bhn; 28-34 HRC)
- D-M-E No. 3 Steel — P-20 type, pre-heat treated (271-321 Bhn; 28-34 HRC)

PLATES WITH "A" THICKNESSES FROM ⅞ TO 2⅞ ALSO AVAILABLE IN:

- D-M-E No. 7 Steel – Modified AISI 400 series stainless steel pre-heat treated (302-340 Bhn; 32-36 HRC)

THICKER PLATES IN D-M-E NO. 7 STEEL ARE AVAILABLE ON SPECIAL ORDER

A	16½ × 23¾		16½ × 29½		A
	ITEM NUMBER	NET WT.	ITEM NUMBER	NET WT.	
⅞	1724-7RGM	98	1729-7RGM	121	⅞
1⅞	1724-13RGM	153	1729-13RGM	190	1⅞
1⅞	1724-17RGM	209	1729-17RGM	259	1⅞
2⅞	1724-23RGM	264	1729-23RGM	328	2⅞
2⅞	1724-27RGM	320	1729-27RGM	397	2⅞
3⅞	1724-33RGM	375	1729-33RGM	466	3⅞
3⅞	1724-37RGM	431	1729-37RGM	535	3⅞
4⅞	1724-47RGM	542	1729-47RGM	673	4⅞
5⅞	1724-57RGM	653	1729-57RGM	811	5⅞

A	17⅞ × 18"		17⅞ × 20"		17⅞ × 23½		17⅞ × 26"		17⅞ × 29½		17⅞ × 35½		A
	ITEM NUMBER	NET WT.	ITEM NUMBER	NET WT.	ITEM NUMBER	NET WT.	ITEM NUMBER	NET WT.	ITEM NUMBER	NET WT.	ITEM NUMBER	NET WT.	
⅞	1818-7RGM	80	1820-7RGM	89	1823-7RGM	105	1826-7RGM	116	1829-7RGM	131	1835-7RGM	158	⅞
1⅞	1818-13RGM	126	1820-13RGM	140	1823-13RGM	164	1826-13RGM	182	1829-13RGM	206	1835-13RGM	248	1⅞
1⅞	1818-17RGM	171	1820-17RGM	190	1823-17RGM	224	1826-17RGM	247	1829-17RGM	281	1835-17RGM	338	1⅞
2⅞	1818-23RGM	217	1820-23RGM	241	1823-23RGM	283	1826-23RGM	313	1829-23RGM	355	1835-23RGM	427	2⅞
2⅞	1818-27RGM	263	1820-27RGM	292	1823-27RGM	343	1826-27RGM	379	1829-27RGM	430	1835-27RGM	517	2⅞
3⅞	1818-33RGM	308	1820-33RGM	342	1823-33RGM	402	1826-33RGM	445	1829-33RGM	505	1835-33RGM	607	3⅞
3⅞	1818-37RGM	354	1820-37RGM	393	1823-37RGM	462	1826-37RGM	511	1829-37RGM	579	1835-37RGM	697	3⅞
4⅞	1818-47RGM	445	1820-47RGM	494	1823-47RGM	581	1826-47RGM	642	1829-47RGM	729	1835-47RGM	877	4⅞
5⅞	1818-57RGM	536	1820-57RGM	596	1823-57RGM	700	1826-57RGM	774	1829-57RGM	878	1835-57RGM	1057	5⅞

A	19½ × 23¾		19½ × 29½		19½ × 35½		A	A	23¾ × 23¾		23¾ × 29½		23¾ × 35½		A
	ITEM NUMBER	NET WT.	ITEM NUMBER	NET WT.	ITEM NUMBER	NET WT.			ITEM NUMBER	NET WT.	ITEM NUMBER	NET WT.	ITEM NUMBER	NET WT.	
⅞	1924-7RGM	115	1929-7RGM	143	1935-7RGM	172	⅞	⅞	2424-7RGM	140	2429-7RGM	174	2435-7RGM	209	⅞
1⅞	1924-13RGM	181	1929-13RGM	224	1935-13RGM	270	1⅞	1⅞	2424-13RGM	220	2429-13RGM	273	2435-13RGM	329	1⅞
1⅞	1924-17RGM	246	1929-17RGM	306	1935-17RGM	368	1⅞	1⅞	2424-17RGM	300	2429-17RGM	373	2435-17RGM	448	1⅞
2⅞	1924-23RGM	312	1929-23RGM	387	1935-23RGM	466	2⅞	2⅞	2424-23RGM	380	2429-23RGM	472	2435-23RGM	568	2⅞
2⅞	1924-27RGM	378	1929-27RGM	469	1935-27RGM	564	2⅞	2⅞	2424-27RGM	460	2429-27RGM	571	2435-27RGM	687	2⅞
3⅞	1924-33RGM	443	1929-33RGM	550	1935-33RGM	662	3⅞	3⅞	2424-33RGM	540	2429-33RGM	670	2435-33RGM	807	3⅞
3⅞	1924-37RGM	509	1929-37RGM	632	1935-37RGM	760	3⅞	3⅞	2424-37RGM	620	2429-37RGM	770	2435-37RGM	926	3⅞
4⅞	1924-47RGM	640	1929-47RGM	795	1935-47RGM	956	4⅞	4⅞	2424-47RGM	779	2429-47RGM	968	2435-47RGM	1165	4⅞
5⅞	1924-57RGM	771	1929-57RGM	958	1935-57RGM	1153	5⅞	5⅞	2424-57RGM	939	2429-57RGM	1167	2435-57RGM	1404	5⅞

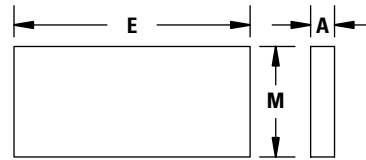
WHEN ORDERING, PLEASE SPECIFY:

1. Quantity & Item Number
2. No. 1, No. 2, No. 3 or No. 7 Steel
3. Method of Shipment

NOTE:

Standard width and thickness available in lengths up to 12 feet. For prices, contact D-M-E.

Ejector Plates D-M-E No. 1 Steel



Thickness of plate is finish ground to a tolerance of plus or minus .001".

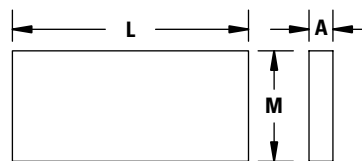
WIDTH OF MOLD BASE	A THICK	M WIDTH	E LENGTH	ITEM NUMBER	NET WT.
6	1	4	14	6-614C	16
7	½	5	6	6-67R	5
			7½	6-88	8
7⅞	1	5¼	11½	6-812	12
			16	6-816	15
			20	6-820	19
			11½	6-912V	11
8 ¹⁵ / ₁₆	½	6*	11½	6-912M	21
9	1	6	16	6-916M	28
			23½	6-923M	40
			8	6-108V	7
9⅞	1	6	6	6-108R	8
			7½	6-108	16
			8	6-1012	24
			11½	6-1016	32
			16	6-1020	39
			20	6-1023	46
			23½	6-1029	58
			29½	6-1112	26
10⅞	1	7	12	6-1114	30
			14	6-1118	38
			18	6-1123	50
			23½	6-1129	62
			29½	6-1212	33
11⅞	1½	8	12	6-1215	41
			15	6-1220	54
			20	6-1223	63
			23½	6-1229	79
			29½		

WIDTH OF MOLD BASE	A THICK	M WIDTH	E LENGTH	ITEM NUMBER	NET WT.
13 ³ / ₈	1½	9½	15	6-1315	46
			18	6-1318	55
			18½	6-1319	57
			20¾	6-1321	63
			23½	6-1323	72
			26	6-1326	79
			29½	6-1329	90
			35½	6-1335	108
14 ⁷ / ₈	1½	11	17½	6-1518	63
			23¾	6-1524	84
			29½	6-1529	104
			35½	6-1535	125
15 ⁷ / ₈	1½	12	16	6-1616	62
			20	6-1620	77
			23½	6-1623	90
			26	6-1626	100
			29½	6-1629	113
			35½	6-1635	136
16 ¹ / ₂	1½	12½	23¾	6-1724	96
			29½	6-1729	119
			35½	6-1735	143
			18	6-1818	81
17 ⁷ / ₈	1½	14	20	6-1820	90
			23½	6-1823	105
			26	6-1826	117
			29½	6-1829	132
			35½	6-1835	159
			23¾	6-1924	119
19 ¹ / ₂	1½	15	29½	6-1929	147
			35½	6-1935	177
			23¾	6-2424	151
23 ³ / ₄	1½	19	29½	6-2429	187
			35½	6-2435	225

WHEN ORDERING, PLEASE SPECIFY:

1. Quantity
2. Item Number
3. Method of Shipment

Ejector Retainer Plates D-M-E No. 1 Steel



Thickness of plate is rotary ground to a tolerance of plus .015", minus .000".

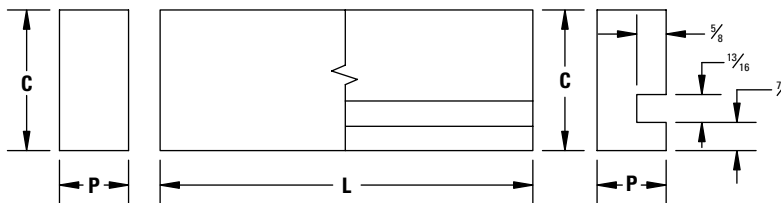
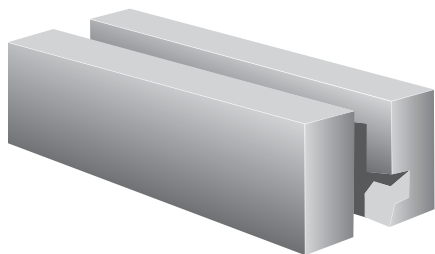
A THICK	M WIDTH	L LENGTH	USED WITH MOLD BASES LISTED BELOW	ITEM NUMBER	NET WT.	
3/8	5	6	6 × 7R	7-67R	4	
	4	10 1/8	6 × 10 1/8	7-611C	7	
	5 1/4	7 1/8	7 1/8 × 7 1/8	7-88	6	
	5 1/4	11 1/8	7 1/8 × 11 1/8	7-812	9	
	6	8	9 1/8 × 8V	7-108V	7	
	6	11 1/8	8 1/8 × 11 1/8V or 9 × 11 1/8M	7-912VM	11	
	1/2	6 1/8	7 1/8	108R	7-108R	8
			8	9 1/8 × 8	7-108	8
		6 3/8	11 1/8	9 1/8 × 11 1/8	7-1012	12
			16	9 1/8 × 16	7-1016	16
20			9 1/8 × 20	7-1020	20	
12			10 1/8 × 12	7-1112	13	
7 1/8		14	10 1/8 × 14	7-1114	15	
		18	10 1/8 × 18	7-1118	19	
		23 1/2	10 1/8 × 23 1/2	7-1123	25	
8 1/8		12	11 1/8 × 12	7-1212	15	
	15	11 1/8 × 15	7-1215	18		
	20	11 1/8 × 20	7-1220	24		
	23 1/2	11 1/8 × 23 1/2	7-1223	28		
5/8	9 1/2	15	13 3/8 × 15	7-1315	26	
		18	13 3/8 × 18	7-1318	31	
		20 3/4	13 3/8 × 20 3/4	7-1321	35	
		23 1/2	13 3/8 × 23 1/2	7-1323	40	
		26	13 3/8 × 26	7-1326	44	
	11	29 1/2	13 3/8 × 29 1/2	7-1329	50	
		17 1/8	14 1/8 × 17 1/8	7-1518	35	
		23 3/4	14 1/8 × 23 3/4	7-1524	47	
		29 1/2	14 1/8 × 29 1/2	7-1529	58	

A THICK	M WIDTH	L LENGTH	USED WITH MOLD BASES LISTED BELOW	ITEM NUMBER	NET WT.
5/8 (cont.)	12	16	15 1/8 × 16	7-1616	34
		20	15 1/8 × 20	7-1620	43
		23 1/2	15 1/8 × 23 1/2	7-1623	50
		26	15 1/8 × 26	7-1626	58
		29 1/2	15 1/8 × 29 1/2	7-1629	63
	12 1/2	35 1/2	15 1/8 × 35 1/2	7-1635	76
		23 3/4	16 1/2 × 23 3/4	7-1724	54
	14	29 1/2	16 1/2 × 29 1/2	7-1729	66
		18	17 1/8 × 18	7-1818	45
		20	17 1/8 × 20	7-1820	50
		23 1/2	17 1/8 × 23 1/2	7-1823	59
		26	17 1/8 × 26	7-1826	65
		29 1/2	17 1/8 × 29 1/2	7-1829	74
		35 1/2	17 1/8 × 35 1/2	7-1835	89
	15 1/8	23 3/4	19 1/2 × 23 3/4	7-1924	66
		29 1/2	19 1/2 × 29 1/2	7-1929	82
		35 1/2	19 1/2 × 35 1/2	7-1935	99
	19 1/8	23 3/4	23 3/4 × 23 3/4	7-2424	84
		29 1/2	23 3/4 × 29 1/2	7-2429	104
		35 1/2	23 3/4 × 35 1/2	7-2435	125

WHEN ORDERING, PLEASE SPECIFY:

1. Quantity
2. Item Number
3. Method of Shipment

Spacer Blocks Plain and Slotted – D-M-E No. 1 Steel



Machined all over. Riser height ("C" dimension) is finish ground to a tolerance of plus or minus .001". Width ("P" dimension) is rough ground to a tolerance of - .000, + .015. Finish ground width available on special order.

Mold Plates | Spacer Blocks; Plain and Slotted – D-M-E No. 1 Steel

P	L	C	PLAIN		SLOTTED	
			ITEM NUMBER	NET WT.	ITEM NUMBER	
1/16	11 1/8	2 1/2	25-912V	8	—	
	1/4	7 1/8	25-408	7	25-508	
1/8		8	3	30-408	9	30-508
	2 1/2		25-608	9	25-708	
	3		30-608	10	30-708	
	4		40-608	14	40-708	
	5		50-608	17	50-708	
	11 1/8	2 1/2	25-612	13	25-712	
		3	30-612	15	30-712	
		3 1/2	—	17	35-712M	
		4	40-612	20	40-712	
		5	50-612	25	50-712	
1/16	16	2 1/2	25-616	17	25-716	
		3	30-616	20	30-716	
		4	40-616	27	40-716	
	20	5	50-616	33	50-716	
		2 1/2	25-620	21	25-720	
		3	30-620	25	30-720	
1 1/16	12	4	40-620	33	40-720	
		5	50-620	41	50-720	
		3	30-112	18	30-212	
	15	4	40-112	23	40-212	
		5	50-112	29	50-212	
		6	60-112	35	60-212	
		3	30-115	22	30-215	
		4	40-115	29	40-215	
		5	50-115	36	50-215	
	18	6	60-115	44	60-215	
		3	30-118	26	30-218	
		4	40-118	35	40-218	
5		50-118	44	50-218		
6		60-118	52	60-218		
3		30-120	29	30-220		
20	4	40-120	39	40-220		
	5	50-120	48	50-220		
	6	60-120	58	60-220		
	3	30-123	34	30-223		
	4	40-123	45	40-223		
	5	50-123	57	50-223		
23 1/2	6	60-123	68	60-223		

P	L	C	PLAIN		SLOTTED		
			ITEM NUMBER	NET WT.	ITEM NUMBER		
1 1/16 (cont.)	26	3	30-126	38	30-226		
		4	40-126	50	40-226		
		5	50-126	63	50-226		
		6	60-126	75	60-226		
		3	30-129	43	30-229		
		4	40-129	57	40-229		
	29 1/2	5	50-129	71	50-229		
		6	60-129	85	60-229		
		3	30-135	51	30-235		
		4	40-135	68	40-235		
		5	50-135	85	50-235		
		6	60-135	102	60-235		
	1/8	8	2 1/2	25-108V	11	—	
		18	3	30-418	29	30-518	
			4	40-418	39	40-518	
			5	50-418	48	50-518	
		20	6	60-418	58	60-518	
			3	30-420	32	30-520	
4			40-420	43	40-520		
23 3/4		5	50-420	54	50-520		
		6	60-420	64	60-520		
		3	30-424	38	30-524		
		4	40-424	51	40-524		
		5	50-424	64	50-524		
	6	60-424	76	60-524			
26	3	30-426	42	30-526			
	4	40-426	56	40-526			
	5	50-426	70	50-526			
	6	60-426	83	60-526			
	3	30-429	48	30-529			
	4	40-429	63	40-529			
29 1/2	5	50-429	79	50-529			
	6	60-429	95	60-529			
	3	30-435	57	30-535			
	4	40-435	76	40-535			
	5	50-435	95	50-535			
	6	60-435	114	60-535			

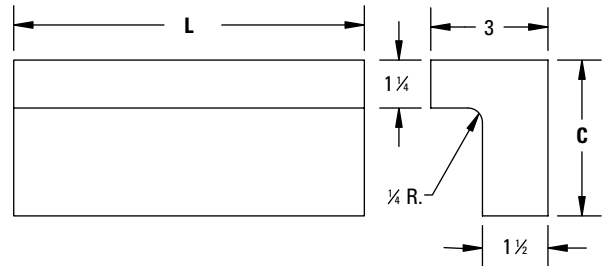
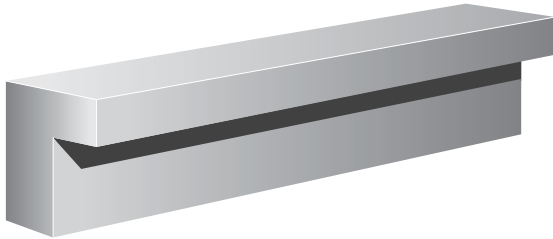
WHEN ORDERING, PLEASE SPECIFY:

1. Quantity
2. Item Number
3. Method of Shipment

Spacer Blocks Angle Spacers – D-M-E No. 1 Steel

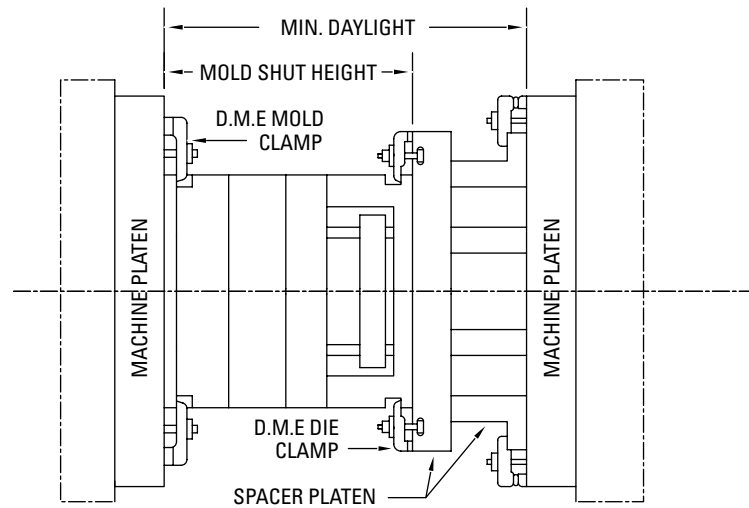
Riser height ("C" dimension) is finish ground to a tolerance of plus or minus .001".

These Angle Spacers are useful for the buildup of Compression Mold Assemblies.

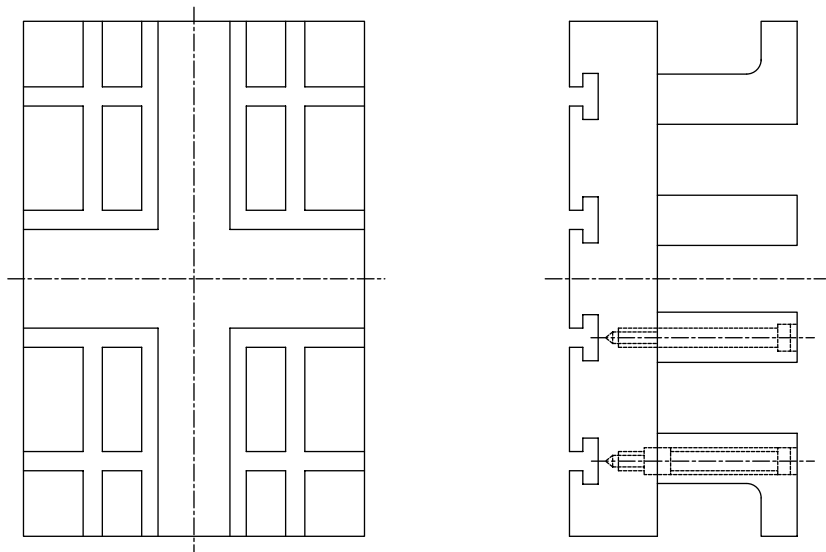


AUXILIARY SPACER PLATENS

When the use of Auxiliary Spacer Platens becomes necessary to reduce the minimum daylight of the press, the importance of proper rigidity cannot be over-emphasized. The drawing shown here illustrates a typical installation that meets good rigidity requirements. The distance between the parallel spacer blocks is dependent on the location of the knock-out rods on the press.



The drawing shown below illustrates a recommended design that is available from D-M-E on special order. The use of standard D-M-E mold plates and spacer blocks can help keep the cost at a minimum. A detailed drawing should accompany your request for a quotation.

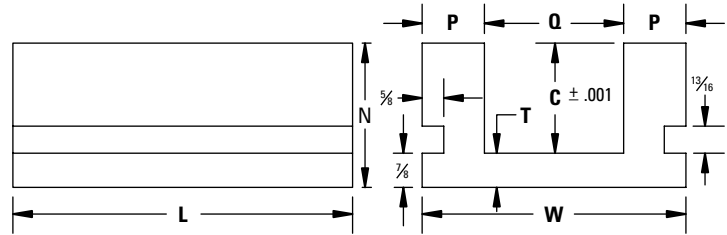
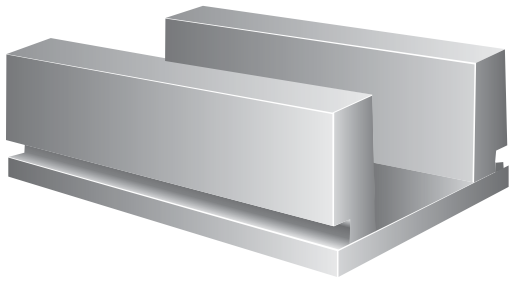


L	C	ITEM NUMBER	NET WT.
12	3	30-312	22
	4	40-312	27
	5	50-312	32
	6	60-312	37
15	3	30-315	28
	4	40-315	34
	5	50-315	40
	6	60-315	47
18	3	30-318	33
	4	40-318	41
	5	50-318	48
	6	60-318	56
20	3	30-320	37
	4	40-320	45
	5	50-320	54
	6	60-320	62
23 ³ / ₄	3	30-324	43
	4	40-324	53
	5	50-324	64
	6	60-324	74
26	3	30-326	47
	4	40-326	59
	5	50-326	70
	6	60-326	81
29 ¹ / ₂	3	30-329	54
	4	40-329	66
	5	50-329	79
	6	60-329	91
35 ¹ / ₂	3	30-335	65
	4	40-335	80
	5	50-335	95
	6	60-335	110

WHEN ORDERING, PLEASE SPECIFY:

- Quantity
- Item Number
- Method of Shipment

Ejector Housings 7 7/8 to 13 3/8 Wide – D-M-E No. 1 Steel



One piece construction provides more rigid support for plastics molds or die cast dies.

Riser height ("C" dimension) is finish ground to a tolerance of plus or minus .001". Outer surfaces are finished square and parallel.

NOTE: Thickness of the base plate (T) is 5/8" for all sizes from 7 7/8" to 19 1/2" wide. The base plate for the 23 3/4" wide series is 1 1/8" thick.

* 1/2" on 88A and 812A Series Mold Bases

DETAIL DIMENSIONS

W	7 7/8"	9 1/8"	10 1/8"	11 1/8"	13 1/8"	14 1/8"	15 1/8"	16 1/2"	17 1/8"	19 1/2"	23 3/4"	C	Height of Riser	2 1/2"	3"	3 1/2"	4"	4 1/2"
P	1 1/4"	1 7/16"	1 1 1/16"	1 1 1/16"	1"	1"	1"	1"	1"	1"	1"	N	7 7/8" to 19 1/2" Wide Housings	3%	3%	4%	4%	5%
Q	5 5/8"	7"	7 1/2"	8 1/2"	9 5/8"	11 1/8"	12 1/8"	12 3/4"	14 1/8"	15 3/4"	20"		23 3/4" Wide Housings	3%	4%	4%	5%	5%

W	L	C	ITEM NUMBER	NET WT.
7 7/8"	7 7/8"	2 1/2"	25-88	28
		3"	30-88	30
		3 1/2"	35-88	33
		4"	40-88	36
		4 1/2"	45-88	39
		5"	50-88	42
	11 1/8"	2 1/2"	25-812	42
		3"	30-812	45
		3 1/2"	35-812	50
		4"	40-812	54
		4 1/2"	45-812	59
		5"	50-812	64
9 1/8"	7 7/8"	2 1/2"	25-108R	34
		2 5/8"	25-108	34
		3"	30-108	37
	8"	3 1/2"	35-108	41
		4"	40-108	44
		4 1/2"	45-108	47
	11 1/8"	2 1/2"	25-1012	50
		3"	30-1012	55
		3 1/2"	35-1012	60
		4"	40-1012	65
		4 1/2"	45-1012	70
		5"	50-1012	75
16"	2 1/2"	25-1016	68	
	3"	30-1016	74	
	3 1/2"	35-1016	81	
	4"	40-1016	87	
	4 1/2"	45-1016	94	
	5"	50-1016	101	
20"	2 1/2"	25-1020	84	
	3"	30-1020	93	
	3 1/2"	35-1020	101	
		4"	40-1020	109
		4 1/2"	45-1020	117

W	L	C	ITEM NUMBER	NET WT.
10 7/8"	12"	2 1/2"	25-1112	58
		3"	30-1112	64
		3 1/2"	35-1112	70
		4"	40-1112	75
		4 1/2"	45-1112	81
		5"	50-1112	87
	14"	2 1/2"	25-1114	68
		3"	30-1114	74
		3 1/2"	35-1114	81
		4"	40-1114	88
		4 1/2"	45-1114	94
		5"	50-1114	101
11 7/8"	18"	2 1/2"	25-1118	87
		3"	30-1118	95
		3 1/2"	35-1118	104
	23 1/2"	4"	40-1118	113
		4 1/2"	45-1118	121
		5"	50-1118	129
	15"	2 1/2"	25-1123	113
		3"	30-1123	124
		3 1/2"	35-1123	136
		4"	40-1123	147
		4 1/2"	45-1123	158
		5"	50-1123	169
12"	3"	30-1212	67	
	3 1/2"	35-1212	73	
	4"	40-1212	78	
	4 1/2"	45-1212	84	
	5"	50-1212	91	
	5 1/2"	55-1212	98	
15"	3"	30-1215	83	
	3 1/2"	35-1215	91	
	4"	40-1215	98	
		4 1/2"	45-1215	105

W	L	C	ITEM NUMBER	NET WT.
11 7/8" (cont.)	20"	3"	30-1220	111
		3 1/2"	35-1220	121
		4"	40-1220	130
		4 1/2"	45-1220	140
		5"	50-1220	150
		5 1/2"	55-1220	161
	23 1/2"	3"	30-1223	130
		3 1/2"	35-1223	142
		4"	40-1223	153
		4 1/2"	45-1223	164
		5"	50-1223	175
		5 1/2"	55-1223	186
13 3/8"	15"	3"	30-1315	94
		3 1/2"	35-1315	102
		4"	40-1315	110
	18"	4 1/2"	45-1315	118
		5"	50-1315	126
		5 1/2"	55-1315	134
	20 3/4"	3"	30-1318	112
		3 1/2"	35-1318	122
		4"	40-1318	131
		4 1/2"	45-1318	141
		5"	50-1318	150
		5 1/2"	55-1318	160
23 1/2"	3"	30-1321	129	
	3 1/2"	35-1321	140	
	4"	40-1321	152	
	4 1/2"	45-1321	163	
	5"	50-1321	174	
	5 1/2"	55-1321	185	
26"	3"	30-1323	147	
	3 1/2"	35-1323	159	
	4"	40-1323	172	
	4 1/2"	45-1323	184	
	5"	50-1323	196	
	5 1/2"	55-1323	208	

WHEN ORDERING, PLEASE SPECIFY:

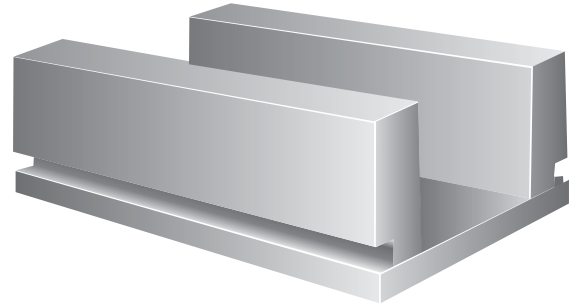
1. Quantity
2. Item Number
3. Method of Shipment

Ejector Housings

13³/₈ to 23³/₄ wide – D-M-E No. 1 Steel

One piece construction provides more rigid support for plastics molds or die-cast dies.

Riser height ("C" dimension) is finish ground to a tolerance of plus or minus .001". Outer surfaces are finished square and parallel.



W	L	C	ITEM NUMBER	NET WT.
13 ³ / ₈ (cont.)	29 ¹ / ₂	3	30-1329	184
		3 ¹ / ₂	35-1329	200
		4	40-1329	215
		4 ¹ / ₂	45-1329	231
14 ⁷ / ₈	17 ⁷ / ₈	3	30-1518	118
		3 ¹ / ₂	35-1518	128
		4	40-1518	137
	23 ³ / ₄	4 ¹ / ₂	45-1518	147
		3	30-1524	157
		3 ¹ / ₂	35-1524	170
15 ⁷ / ₈	29 ¹ / ₂	4	40-1524	182
		4 ¹ / ₂	45-1524	195
		3	30-1529	195
	16	3 ¹ / ₂	35-1529	210
		4	40-1529	226
		4 ¹ / ₂	45-1529	242
		3	30-1616	110
		3 ¹ / ₂	35-1616	118
		4	40-1616	127
		4 ¹ / ₂	45-1616	135
20	3	30-1620	137	
	3 ¹ / ₂	35-1620	148	
	4	40-1620	158	
	4 ¹ / ₂	45-1620	169	
	23 ¹ / ₂	3	30-1623	161
		3 ¹ / ₂	35-1623	174
		4	40-1623	186
		4 ¹ / ₂	45-1623	199
26	3	30-1626	178	
	3 ¹ / ₂	35-1626	192	
	4	40-1626	206	
	4 ¹ / ₂	45-1626	220	

W	L	C	ITEM NUMBER	NET WT.
15 ⁷ / ₈ (cont.)	29 ¹ / ₂	3	30-1629	202
		3 ¹ / ₂	35-1629	218
		4	40-1629	233
		4 ¹ / ₂	45-1629	249
16 ¹ / ₂	35 ¹ / ₂	3	30-1635	243
		3 ¹ / ₂	35-1635	262
		4	40-1635	281
	23 ³ / ₄	4 ¹ / ₂	45-1635	300
		3	30-1724	166
		3 ¹ / ₂	35-1724	179
17 ⁷ / ₈	29 ¹ / ₂	4	40-1724	192
		4 ¹ / ₂	45-1724	204
		3	30-1729	207
	18	3 ¹ / ₂	35-1729	222
		4	40-1729	238
		4 ¹ / ₂	45-1729	254
		3	30-1818	132
		3 ¹ / ₂	35-1818	142
		4	40-1818	152
		4 ¹ / ₂	45-1818	161
20	3	30-1820	147	
	3 ¹ / ₂	35-1820	158	
	4	40-1820	168	
	4 ¹ / ₂	45-1820	179	
	23 ¹ / ₂	3	30-1823	173
		3 ¹ / ₂	35-1823	185
		4	40-1823	198
		4 ¹ / ₂	45-1823	210
26	3	30-1826	191	
	3 ¹ / ₂	35-1826	205	
	4	40-1826	219	
	4 ¹ / ₂	45-1826	233	

W	L	C	ITEM NUMBER	NET WT.
17 ⁷ / ₈ (cont.)	29 ¹ / ₂	3	30-1829	217
		3 ¹ / ₂	35-1829	232
		4	40-1829	248
		4 ¹ / ₂	45-1829	264
19 ¹ / ₂	35 ¹ / ₂	3	30-1835	261
		3 ¹ / ₂	35-1835	280
		4	40-1835	298
	23 ³ / ₄	4 ¹ / ₂	45-1835	317
		3	30-1924	184
		3 ¹ / ₂	35-1924	197
23 ³ / ₄	29 ¹ / ₂	4	40-1924	209
		4 ¹ / ₂	45-1924	222
		3	30-1929	229
	35 ¹ / ₂	3 ¹ / ₂	35-1929	244
		4	40-1929	260
		4 ¹ / ₂	45-1929	276
		3	30-1935	275
		3 ¹ / ₂	35-1935	294
		4	40-1935	313
		4 ¹ / ₂	45-1935	332
29 ¹ / ₂	3	30-2424	289	
	3 ¹ / ₂	35-2424	302	
	4	40-2424	314	
	4 ¹ / ₂	45-2424	327	
	35 ¹ / ₂	3	30-2429	359
		3 ¹ / ₂	35-2429	375
		4	40-2429	390
		4 ¹ / ₂	45-2429	406
48	3	30-2435	432	
	3 ¹ / ₂	35-2435	451	
	4	40-2435	470	
	4 ¹ / ₂	45-2435	488	

WHEN ORDERING, PLEASE SPECIFY:

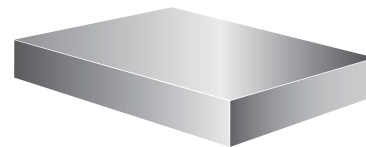
1. Quantity
2. Item Number
3. Method of Shipment

Mold Plates, Ejector and Ejector Retainer Plates and Ejector Housings

Mold Plates

For 34 & 45R, 56 & 58N, 56 & 58U Mold Assemblies

(For cavity, support and top clamping plates).



Thickness of plate is finish ground to a tolerance of plus or minus .001". Width and length are finished square and parallel.

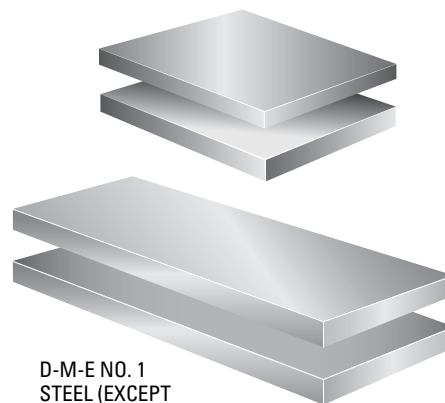
NOTE: Plates marked with a * are also available as cavity insert blocks with additional stock allowance. Please specify **mold plate** when ordering these sizes from this page.

TYPE OF SEAL	A (THICKNESS)	3 1/2" x 3 3/4"		4" x 5"		5" x 6"		5" x 8"	
		ITEM NUMBER	NET WT.	ITEM NUMBER	NET WT.	ITEM NUMBER	NET WT.	ITEM NUMBER	NET WT.
No. 2	3/8	34-3	1.4	—	—	—	—	—	—
	1/2	34-4	1.9	—	—	—	—	—	—
	5/8	—	—	45-5	3.5	—	—	—	—
No. 3	7/8	34-7 *	3.3	45-7 *	4.9	56-7 *	7.5	58-7 *	10.0
No. 2	1	—	—	—	—	56-8	8.5	58-8	11.4
No. 3	1 1/8	34-11	4.2	—	—	—	—	—	—
	1 3/8	34-13 *	5.2	45-13 *	7.8	56-13 *	11.7	58-13 *	15.6
	1 5/8	—	—	45-17 *	10.6	56-17 *	16.0	58-17 *	21.3

Ejector and Ejector Retainer Plates

For 34 & 45R, 56 & 58N, 56 & 58U Mold Assemblies

A	2 1/2" x 3 1/2"		3 3/8" x 4"		3 3/8" x 8"	
	ITEM NUMBER	NET WT.	ITEM NUMBER	NET WT.	ITEM NUMBER	NET WT.
3/16	6-34	.5	—	—	—	—
3/8	—	—	7-45	1.3	7-58	2.7
1/2	—	—	6-45	1.8	6-58	3.6



D-M-E NO. 1 STEEL (EXCEPT 6-34 = SAE 1020)

EJECTOR PLATES

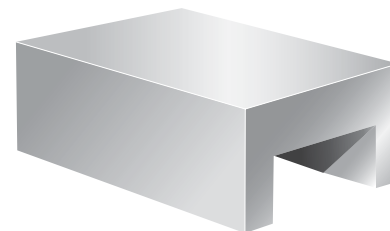
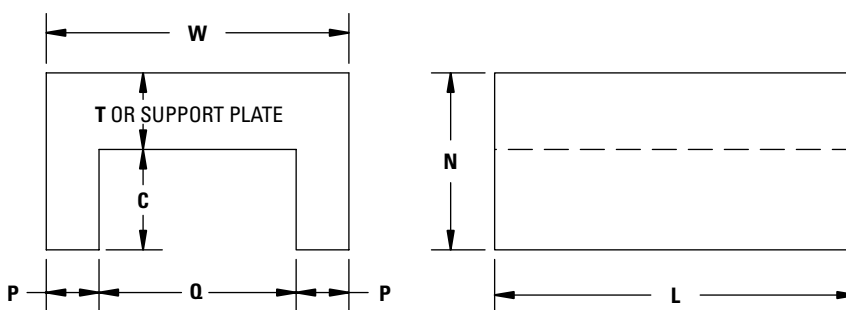
Thickness of plate is finish ground to a tolerance of plus or minus .001".

EJECTOR RETAINER PLATES

Thickness of plate is rotary ground to a tolerance of plus .015", minus .000".

Ejector Housings

For 34 & 45R, 56 & 58N, 56 & 58U Mold Assemblies



D-M-E NO. 1 STEEL

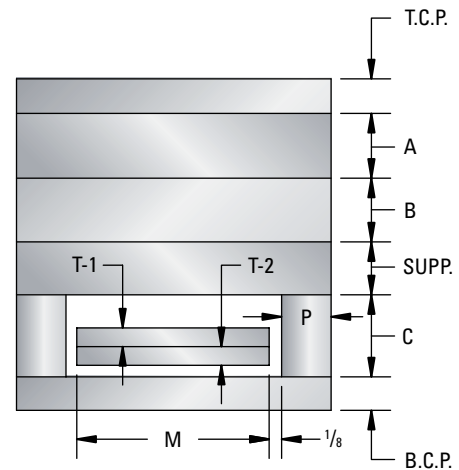
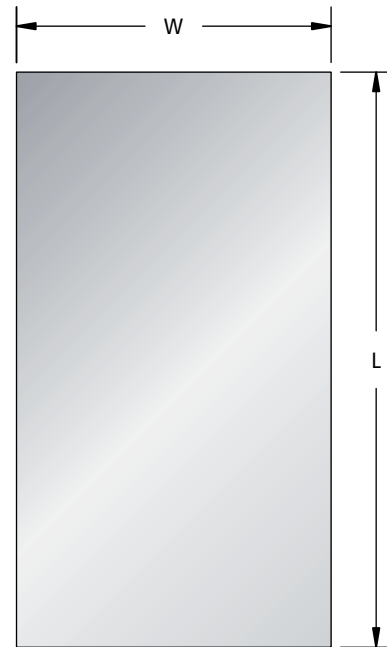
Ejector Housings for small-size Mold Bases are one-piece construction which provides more rigid support with fewer parts. All surfaces are machined square and parallel. The riser height is finish ground parallel to the surface of the base plate.

W	L	C	T OR SUPPORT PLATE	N	P	Q	ITEM NUMBER	No. 1 STEEL	No. 3 STEEL	NET WT.
3/4	3 1/2	1.080	1/2	1.580	3/16	2 3/4	10-34	•	—	3.1
	4	2	1/2	2 1/2	7/8	3 3/4	20-45	•	—	6.8
5	6	1 3/8	1 1/4	2 3/4	7/8	3 3/4	15-56	•	•	15.5
	8	1 3/8	1 1/4	2 3/4	7/8	3 3/4	15-58	•	•	20.7
7	6	2	1/2	2 1/2	1 5/16	5 3/8	20-67	•	—	12.4

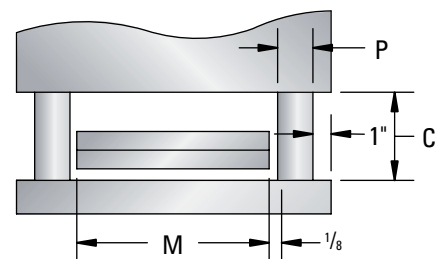
Large Mold Plate Selection Chart

MOLD WIDTH & LENGTH PLATE THICKNESS (A, B & SUPP.)			Top Clamping (T.C.P.) or Bottom Clamping (B.C.P.) Plate Thk.	EJECTOR & EJECTOR RETAINER PLATES			SPACER BLOCKS (RISERS)		
Mold Plate Width W	Mold Plate Length L	Plate Thk. A, B & Supp.		Width M	Ej. Plt. Thk. T-2	Ret. Plt. Thk. T-1	Width P FLUSH Type	Width P RECESSED Type	
26 ³ / ₄	30	1 ³ / ₈	1 ³ / ₈ or 1 ¹ / ₈	20 ³ / ₄	1 ³ / ₈	7/8	2 ⁷ / ₈	1 ⁷ / ₈	5
	36	1 ¹ / ₈			1 ⁷ / ₈				6
	42	2 ⁷ / ₈		22 ³ / ₄	1 ³ / ₈	7/8	1 ¹ / ₈	—	8
	48	3 ⁷ / ₈			1 ⁷ / ₈				5
	54	4 ⁷ / ₈			1 ³ / ₈				6
		5 ⁷ / ₈			1 ⁷ / ₈				8
29 ³ / ₄	30	1 ³ / ₈	1 ³ / ₈ or 1 ¹ / ₈	23 ³ / ₄	1 ³ / ₈	7/8	2 ⁷ / ₈	1 ⁷ / ₈	5
	36	1 ¹ / ₈			1 ⁷ / ₈				6
	42	2 ⁷ / ₈		25 ³ / ₄	1 ³ / ₈	7/8	1 ¹ / ₈	—	8
	48	3 ⁷ / ₈			1 ⁷ / ₈				5
	54	4 ⁷ / ₈			1 ³ / ₈				6
		5 ⁷ / ₈			1 ⁷ / ₈				8
33 ³ / ₄	36	1 ³ / ₈	1 ³ / ₈ or 1 ¹ / ₈	25 ³ / ₄	1 ³ / ₈	7/8	3 ⁷ / ₈	2 ⁷ / ₈	5
	42	1 ¹ / ₈			1 ⁷ / ₈				6
	48	2 ⁷ / ₈		27 ³ / ₄	1 ³ / ₈	7/8	2 ⁷ / ₈	1 ⁷ / ₈	8
	54	3 ⁷ / ₈			1 ⁷ / ₈				5
	54	4 ⁷ / ₈			1 ³ / ₈				6
	60	5 ⁷ / ₈			1 ⁷ / ₈				8
37 ³ / ₄	42	1 ³ / ₈	1 ³ / ₈ or 1 ¹ / ₈	27 ³ / ₄	1 ³ / ₈	7/8	—	3 ⁷ / ₈	5
	48	1 ¹ / ₈			1 ⁷ / ₈				6
	54	2 ⁷ / ₈		29 ³ / ₄	1 ³ / ₈	7/8	3 ⁷ / ₈	2 ⁷ / ₈	8
	60	3 ⁷ / ₈			1 ⁷ / ₈				5
	66	4 ⁷ / ₈			1 ³ / ₈				6
		5 ⁷ / ₈			1 ⁷ / ₈				8
41 ³ / ₄	42	1 ³ / ₈	1 ³ / ₈ or 1 ¹ / ₈	31 ³ / ₄	1 ³ / ₈	7/8	—	3 ⁷ / ₈	5
	48	1 ¹ / ₈			1 ⁷ / ₈				6
	54	2 ⁷ / ₈		33 ³ / ₄	1 ³ / ₈	7/8	3 ⁷ / ₈	2 ⁷ / ₈	8
	60	3 ⁷ / ₈			1 ⁷ / ₈				5
	66	4 ⁷ / ₈			1 ³ / ₈				6
		5 ⁷ / ₈			1 ⁷ / ₈				8
45 ³ / ₄	48	1 ³ / ₈	1 ³ / ₈ or 1 ¹ / ₈	35 ³ / ₄	1 ³ / ₈	7/8	—	3 ⁷ / ₈	5
	54	1 ¹ / ₈			1 ⁷ / ₈				6
	60	2 ⁷ / ₈		37 ³ / ₄	1 ³ / ₈	7/8	3 ⁷ / ₈	2 ⁷ / ₈	8
	66	3 ⁷ / ₈			1 ⁷ / ₈				5
		4 ⁷ / ₈			1 ³ / ₈				6
		5 ⁷ / ₈			1 ⁷ / ₈				8

See the following pages for complete specifications.



FLUSH TYPE SPACER BLOCK ARRANGEMENT



RECESSED TYPE SPACER BLOCK ARRANGEMENT

NOTE: ALL SPACER BLOCKS ARE PLAIN (NO SLOTS)