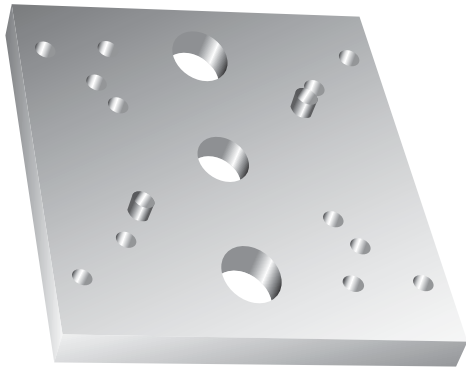
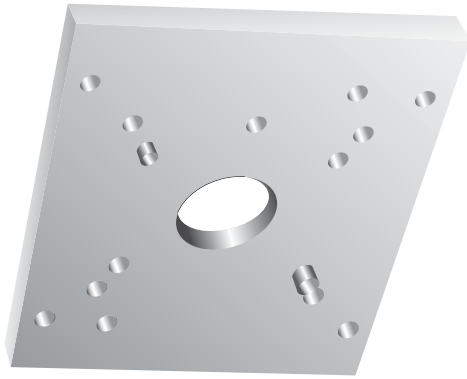


## Small Mold Base Adapter Plates



### D-M-E No. 2 Steel

### With D-M-E Small Mold Base Adapter Plates You Can.....

#### Lower your mold costs

Only one set of low cost Adapter Plates is required for each injection molding machine. The Adapter Plates can become a permanent part of your press platen...or can easily be removed to allow installation of larger mold bases. The Adapter Plates can also be moved to another press to meet your production requirements. D-M-E Small Mold Bases provide the highest quality, most economical mold base assemblies for either short runs or production runs. Cavity and support plates are made from D-M-E No. 3 cavity steel.

#### Change mold bases in minutes

With D-M-E's exclusive Adapter Plate System, standard 5"x 6" U and 5"x 8" U Series Mold Bases can be easily changed in 10 minutes or less. Costly machine downtime is reduced to a minimum.

#### Increase your profits

The D-M-E's Adapter Plate System provides economic manufacturing for greater profitability. The unique system lends itself to minimum cavity, high-speed cycle operations. Fast interchangeability of mold bases makes short runs just as profitable as long runs... no costly fill-ins!

#### D-M-E Adapter Plates are:

- ① Pre-drilled and tapped to match platen holes
- ② Pre-machined with clearance holes for knockout rods
- ③ Pre-drilled and tapped to match mounting holes on D-M-E 5"x 6" U series mold bases... with precision dowels for fast, accurate alignment. (One dowel is off-set to prevent improper installation.)
- ④ Completely machined to accommodate your choice of sprue bushing and locating ring.

