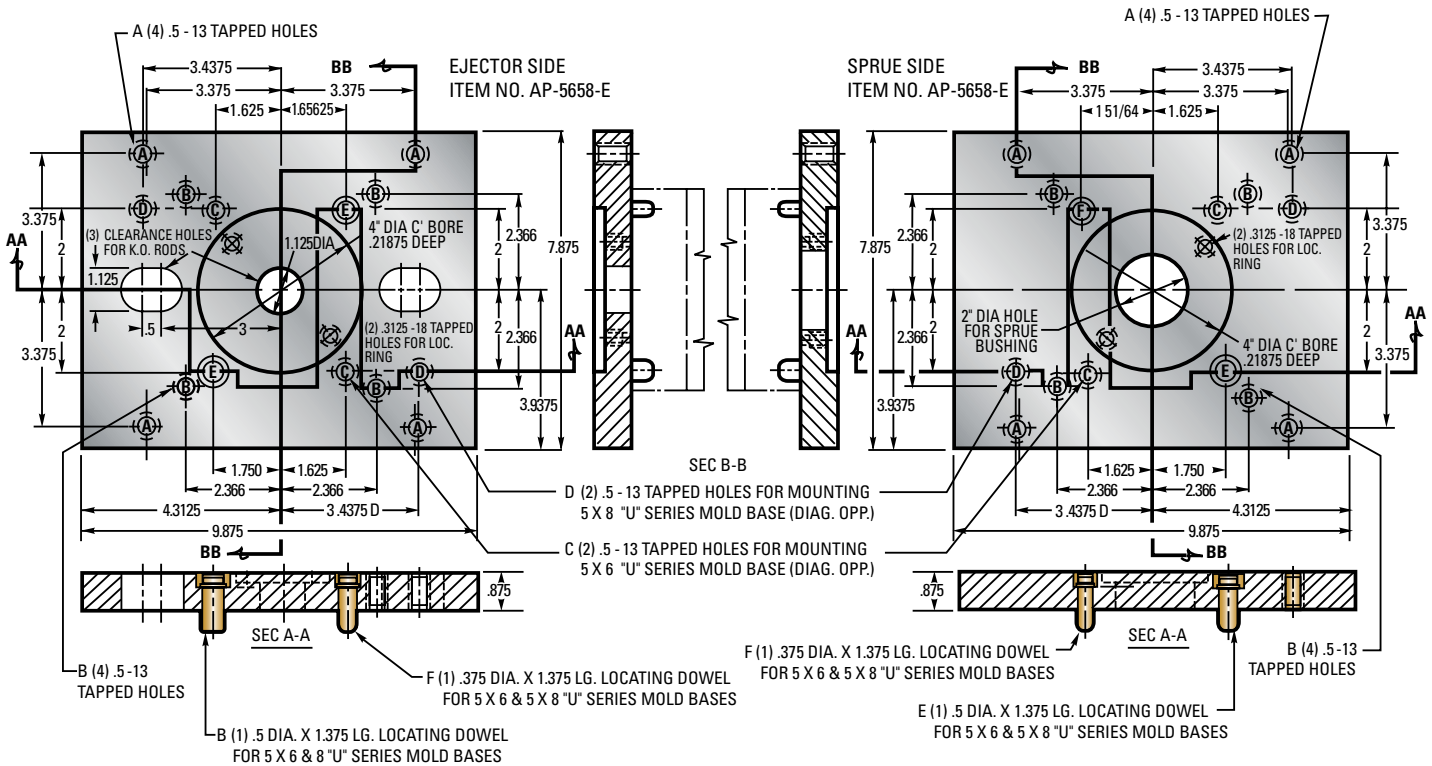


Custom Designed Standard Universal Adapter Plates - AP-5658-SET



D-M-E No. 2 Steel



Item Number: AP-5658-SET*

***Consists of:**

ITEM	LENGTH	WIDTH	THICKNESS	NET WT.
(1) 5658S-AP-2 (SPRUE SIDE)	9.875	7.875	.875	20
(1) 5658E-AP-2 (EJECTOR SIDE)	9.875	7.875	.875	20

NOTE: Sprue bushings are supplied with D-M-E Small mold bases. Plates MAY be ordered separately.