

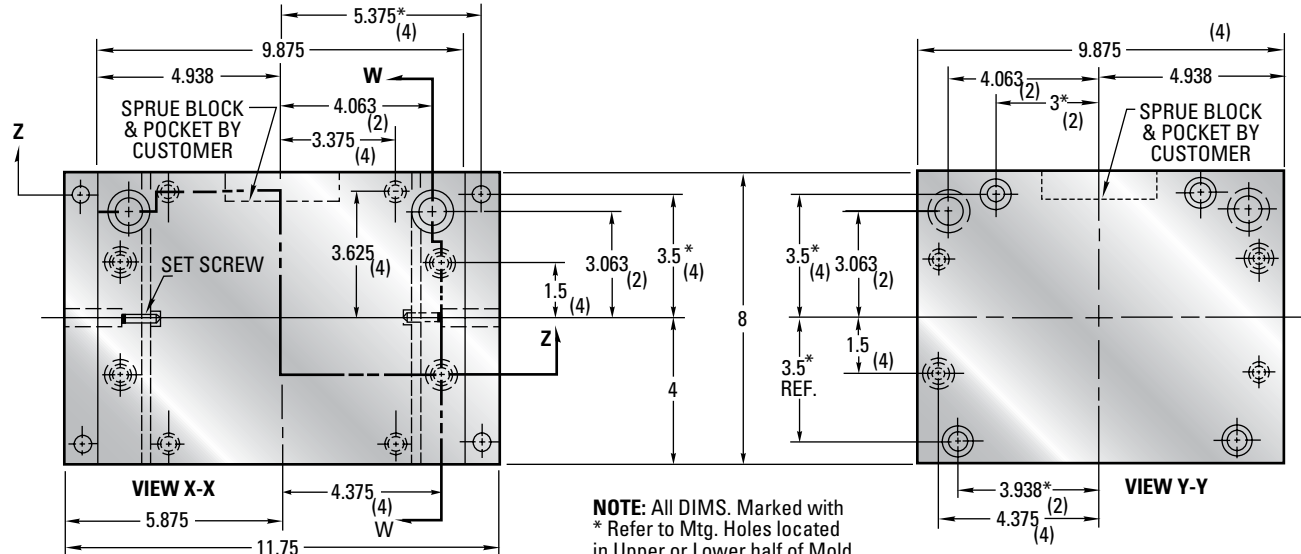
8" x 9 7/8" SH Shuttle Mold Bases - 810SH

Engineered and designed for various models of Autojectors, Moslo, Newbury, Reed, and Van Dorn vertical injection presses with shuttle tables.

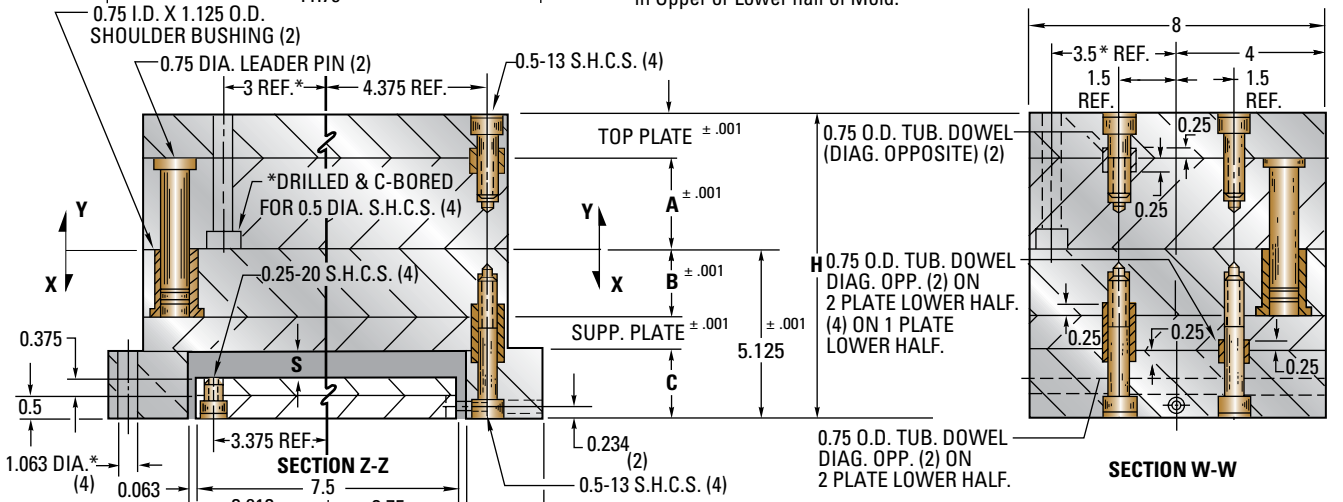
EJECTOR STROKE DATA

C	1.25	1.875
S	0.5	1"

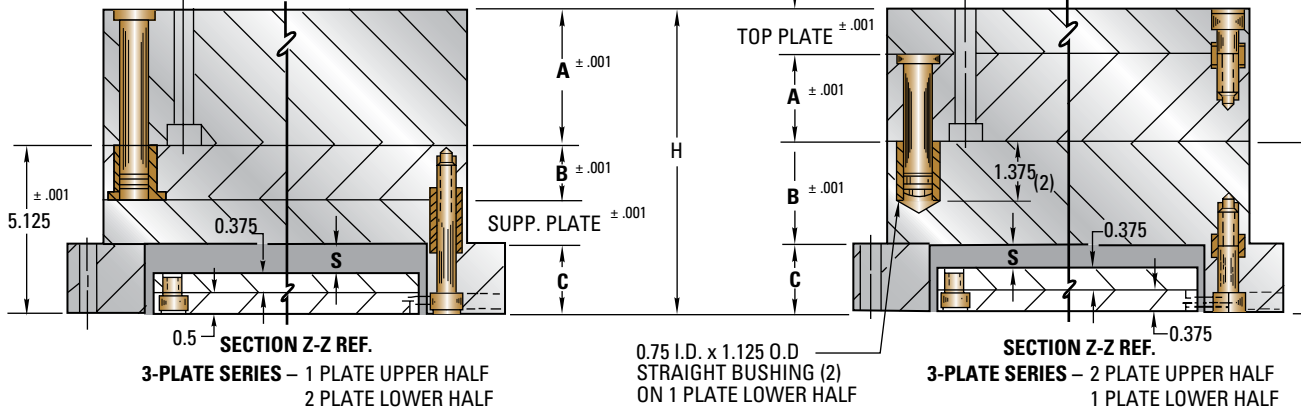
C = Height of Riser.
S = Max. Stroke of Ejector Bar.



NOTE: All DIMS. Marked with * Refer to Mtg. Holes located in Upper or Lower half of Mold.



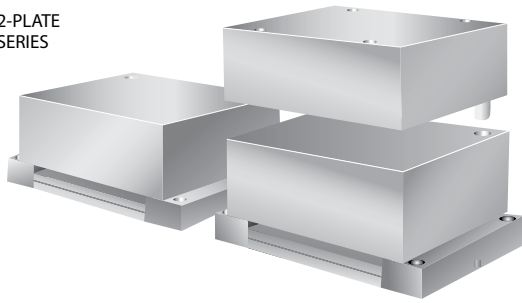
4-PLATE SERIES -
2 PLATE UPPER HALF
2 PLATE LOWER HALF



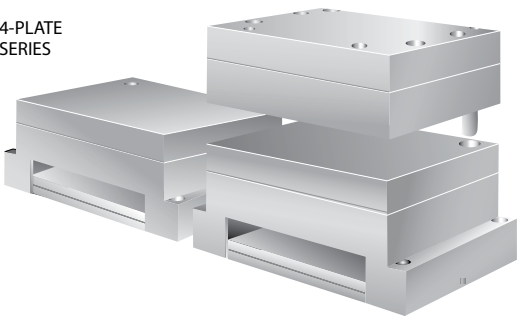
Small and Shuttle Mold Bases | 8" x 9 7/8" SH Shuttle Mold Bases

8" x 9 7/8" SH Shuttle Mold Bases – 810SH

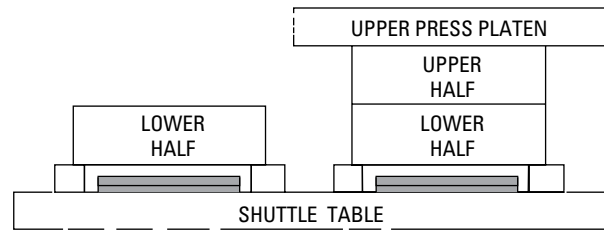
2-PLATE SERIES



4-PLATE SERIES



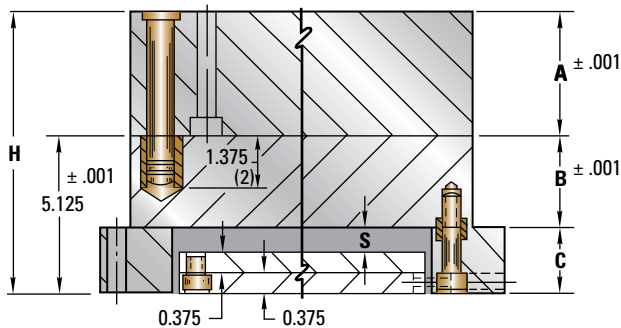
Shuttle Mold Bases listed below are supplied complete with one upper and two lower sub-assemblies. Upper and lower sub-assemblies are pre-drilled to match platen holes of presses listed in chart. Solid rails (spacer blocks) extend beyond support or cavity plate for ease of installation in press.



SERIES	TOP PLATE	A	B	SUPP. PLATE	C	H	S	FITS PRESS*	ITEM NUMBER	NET WT.
2 PLATE	–	3.375	3.875	–	1.25	8.5	0.5	** AJ-M-N RD-V	810SH2-0-33-37-0	298
	1	2.375	3.875	–	1.25		0.5		810SH3-10-23-37-0	298
3 PLATE	–	3.375	1.375	1.875	1.875	8.5	1	** AJ-M-N RD-V	810SH3-0-33-13-17	286
	–	3.375	1.875	1.375					810SH3-0-33-17-13	286
	–	3.375	2.375	0.875					810SH3-0-33-23-7	286
	–	3.375	0.875	2.375					810SH4-23-7-7-23	284
4 PLATE	2.375	0.875	1.375	1.875	1.875	8.375	1	N-RD-V	810SH4-23-7-13-17	284
	2.375	0.875	1.375	1.875				N-RD-V	810SH4-17-13-13-17	284
	1.875	1.375	1.375	1.875				N-RD-V	810SH4-17-13-17-13	284
	1.875	1.375	1.875	1.375				N-RD-V	810SH4-17-13-23-7	284
	1.875	1.375	1.875	1.375				N-RD-V	810SH4-13-17-17-13	284
	1.375	1.875	1.875	1.375				N-RD-V	810SH4-10-23-13-17	286
	1	2.375	1.875	1.375		8.5	1	** AJ-M N-RD-V	810SH4-10-23-17-13	286
	1	2.375	2.375	0.875				810SH4-10-23-23-7	286	

*AJ = Autojectors M = Moslo N = Newbury RD = Reed V = Van Dorn

** NOTE: All Autojector applications require a 0.5" thick spacer for upper half (check with molder; machine may be equipped with required spacer).



SECTION Z-Z REF.
2-PLATE SERIES – 1 PLATE UPPER HALF
1 PLATE LOWER HALF

AVAILABLE IN:

- D-M-E No. 1 or No. 3 Steel

NO. 3 STEEL ASSEMBLY

- "A" and "B" Plate - No. 3 Steel
- Top & Support Plates - No. 2 Steel

WHEN ORDERING, PLEASE SPECIFY:

1. Quantity & Item Number
2. No. 1 or No. 3 Steel
3. Method of Shipment