

# D-M-E Mold Plates

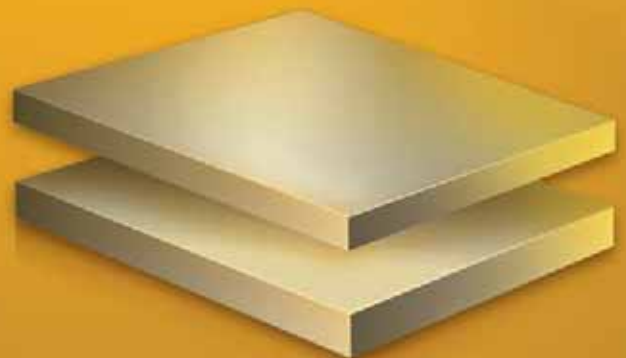
Over 400 standard sizes  
in four steel types



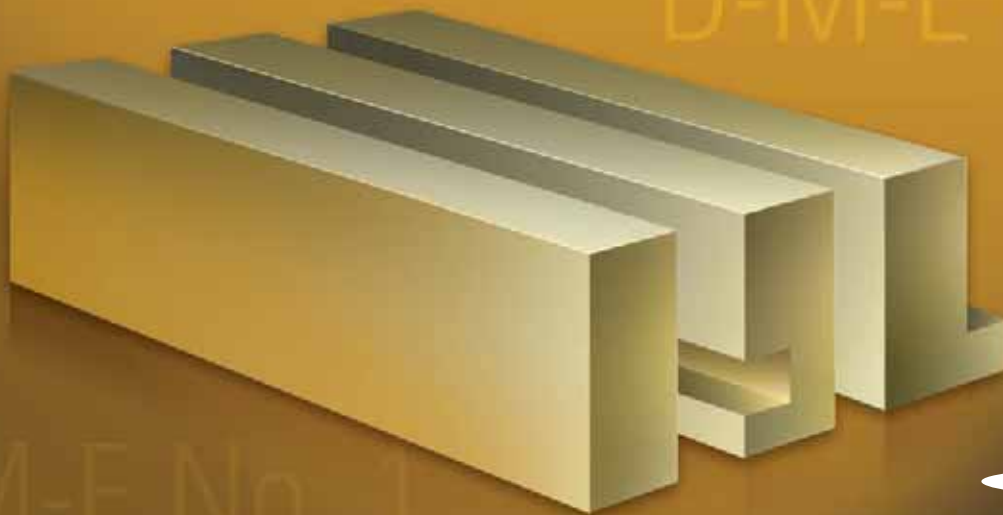
D-M-E No. 7



D-M-E No. 5



D-M-E No. 3



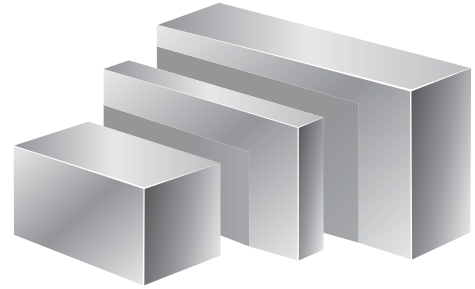
D-M-E No. 1

## D-M-E Standard

### Die Blocks and Plates — No. 5 Steel

Available in over 300 standard sizes from  $7\frac{7}{8} \times 7\frac{7}{8}$  to  $23\frac{3}{4} \times 35\frac{1}{2}$ ;  $1\frac{3}{8}$  to  $11\frac{7}{8}$  thick (depending on length and width). They are supplied in milled condition, with approximately .060" stock allowance.

**D-M-E No. 5 Steel meets or exceeds the acceptance criteria established by the NADCA as detailed in Technical Digest Number 01-80-01D.**



### Mold Plates and Plate Items

Mold Plates are available in over 400 standard sizes, from  $6" \times 7"$  to  $23\frac{3}{4} \times 35\frac{1}{2}$  in D-M-E No. 1, No. 2, or No. 3 Steel. Plates from  $7\frac{7}{8} \times 7\frac{7}{8}$  to  $23\frac{3}{4} \times 35\frac{1}{2}$  are also available in D-M-E No. 7 Steel (up to  $2\frac{7}{8}$  thick).

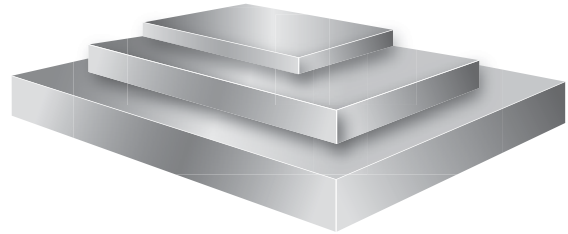
In addition, they are offered in the following two conditions:

#### FINISH GROUND PLATES

Thickness is finish ground top and bottom to a tolerance of  $\pm .001"$  with all edges finished square and parallel.

#### ROTARY GROUND PLATES

Thickness is rotary ground to a tolerance of  $+.015/+.020$  or  $+.025/+.030$  depending on plate width. Length and width are milled ( $+.005/+.011$ ).

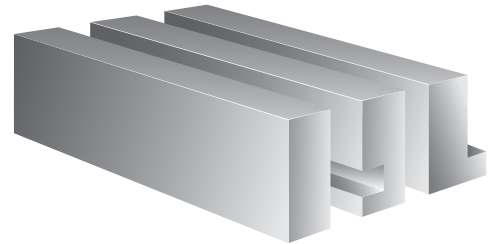


#### Additional standard plate items include:

EJECTOR AND EJECTOR RETAINER PLATES  
PLATE ITEMS FOR SMALL MOLD BASES

### Spacer Blocks

Plain, Slotted and Angle Spacers are all made from D-M-E No. 1 Steel. Riser height (C dimension) is finish ground to plus or minus .001".



### Ejector Housings

Rigid one-piece construction is made from D-M-E No. 1 Steel. Available in over 150 standard sizes, corresponding to D-M-E Standard "A" Series Mold Bases. The riser height (C dimension) is finish ground to plus or minus .001".

