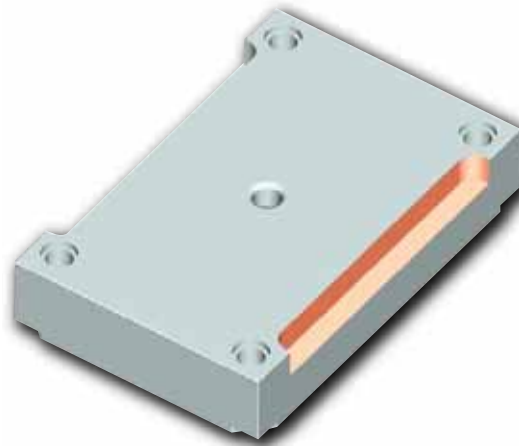


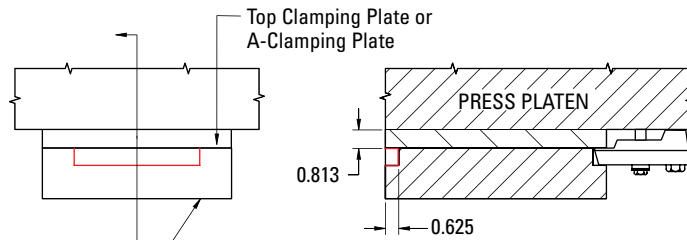
Machining of Clamp Slots

Clamp Slots facilitate clamping the mold to the platen of the press. D-M-E mold bases offer four slot types (shown below) to ensure the best fit for the requirements of your application.



Type A

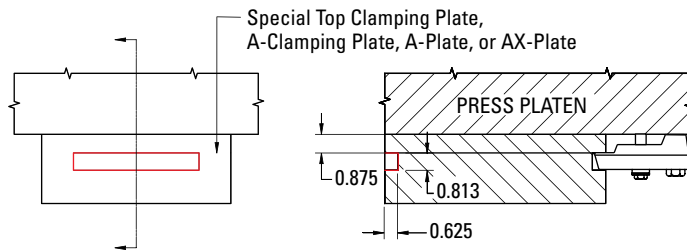
Machined when Top Clamping Plate is 0.875 or 1.375



NOTE:
When this plate is 0.875 thick, the slots will be machined through the thickness.

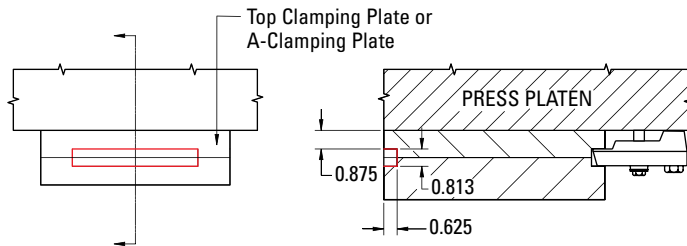
Type B

Machined in plates that are 2.375 or thicker



Type C

Machined only when specified by a customer



Type D

Machined plates that are 1.875 thick

