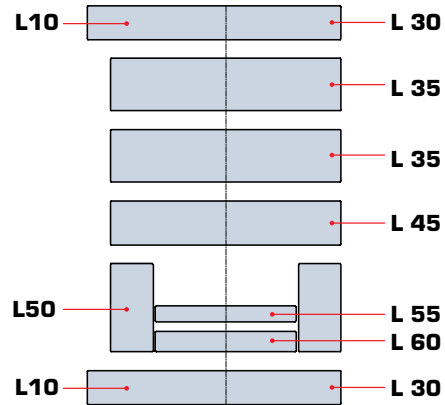


Ordering Information

D-M-E Euro-Series Mold Bases are ordered and delivered as individual items. Any item can be ordered at any time and assembled with a new or existing Euro-Series Mold Base. Ordering is as simple as selecting the items you need and calling D-M-E Customer Service.

Steel Type Availability

DIN Type	1730	2738
D-M-E	#1	#3
L10, L30	✓	
L35	✓	✓
L45	✓	
L50, L55, L60	✓	



Euro-Series Mold Base Product Line Item Number Code Logic

L35 01 196 296 027

Plate Code

The letter L followed by two digits

Steel Code

"01" for 1730 Steel (D-M-E #1)
 "17" for 2738 Steel (D-M-E #3)

Plate Width

Three-digit number with a leading zero, if necessary

Plate Length

Three-digit number with a leading zero, if necessary

Plate Thickness

Three-digit number with a leading zero, if necessary

Examples

L3501196296027

L35 cavity plate from 1730 steel (#1) that is 196mm wide by 296mm long and 27mm thick

L4501190246036

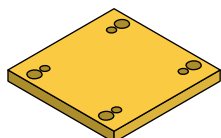
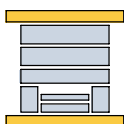
L45 cavity plate from 1730 steel (#1) that is 190mm wide by 246mm long and 36mm thick

L3517246296056

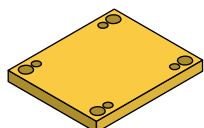
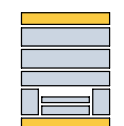
L35 cavity plate from 2738 steel (#3) that is 246mm wide by 296mm long and 56mm thick

Ordering Information

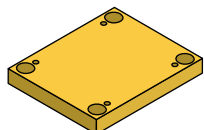
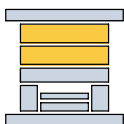
2020 196 x 196	1925 196 x 246	2030 196 x 296	2525 246 x 246	2530 246 x 296	2535 246 x 346	2540 246 x 396	3030 296 x 296	3035 296 x 346	3040 296 x 396
--------------------------	--------------------------	--------------------------	--------------------------	--------------------------	--------------------------	--------------------------	--------------------------	--------------------------	--------------------------

L10

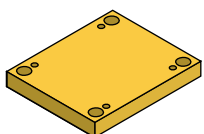
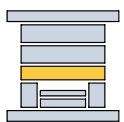
	2020	1925	2030	2525	2530	2535	2540	3030	3035	3040
1730 Steel (#1)	27	27	27	27	27	27	27	27	27	27

L30

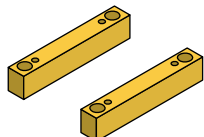
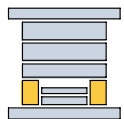
1730 Steel (#1)	NA	NA	27	27	27	27	27	27	27	27
------------------------	----	----	----	----	----	----	----	----	----	----

L35

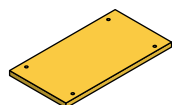
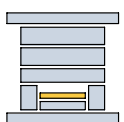
1730 Steel (#1)	36	36	36	36	36	36	36	36	36	36
	46	46	46	46	46	46	46	46	46	46
	66	66	66	66	66	66	66	66	66	66
2738 Steel (#3)	36	36	36	36	36	36	36	36	36	36
	46	46	46	46	46	46	46	46	46	46
	66	66	66	66	66	66	66	66	66	66

L45

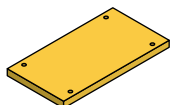
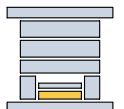
1730 Steel (#1)	27	27	36	36	36	36	36	36	36	36
------------------------	----	----	----	----	----	----	----	----	----	----

L50

1730 Steel (#1)	56	56	56	56	56	56	56	56	56	56
	76	76	76	76	76	76	76	76	76	76
	96	96	96	96	96	96	96	96	96	96

L55

1730 Steel (#1)	12	12	12	12	12	17	17	12	17	17
------------------------	----	----	----	----	----	----	----	----	----	----

L60

1730 Steel (#1)	17	17	17	17	17	22	22	17	22	22
------------------------	----	----	----	----	----	----	----	----	----	----

Note: All dimensions provided are in millimeters and reflect plate thickness.