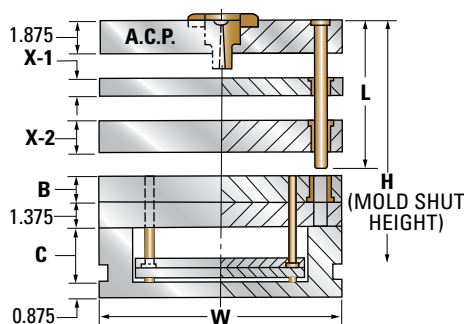
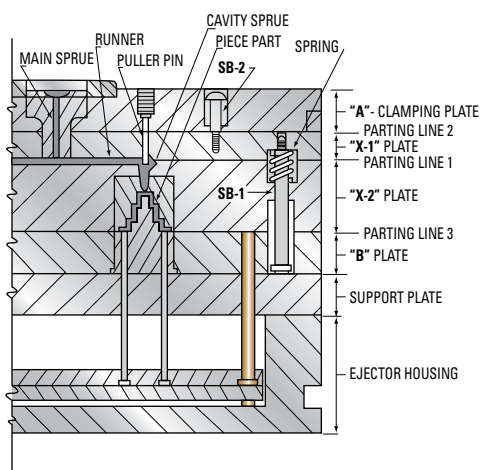
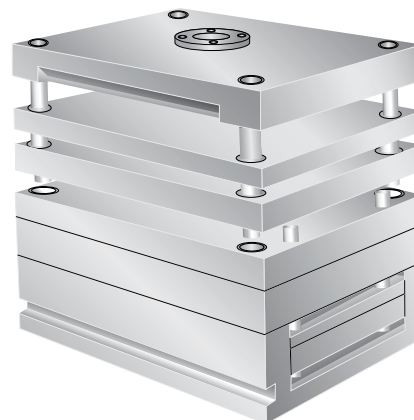


7⁷/₈" T-Series (3-Plate) Mold Bases

A typical 3-plate top runner mold operates as follows: The mold opens first at Parting Line 1 (spring loaded). The runner and cavity sprues are pulled from the cavities in the "X-2" Plate and held against the "X-1" Plate by undercut puller pins.

As the mold continues to open ("X-2" Plate moving forward), stripper bolts SB-1 pull the "X-1" Plate forward (at the end of the "X-2" Plate movement). The "X-1" Plate travel is determined by stripper bolts SB-2. The travel of the "X-1" Plate (breaking at Parting Line 2) strips the entire runner system from the puller pins, breaks the main sprue (held to a minimum length), and allows the runner to drop free. Mold opening at Parting Line 3 then takes place for piece part ejection.



For detailed dimensions, see corresponding size "A" Series Mold Base

X-, AX- and T-Series Mold Bases | 7⁷/₈" T-Series (3-Plate) Mold Bases

X-2	X-1 = 0.875			7.875 x 7.875	
	B	C	H	ITEM NUMBER	NET WT.
1.375	0.875	2.5	9.75	88T-13-7	153
	1.375	2.5	10.25	88T-13-13	162
	1.875	2.5	10.75	88T-13-17	171
1.875	0.875	2.5	10.25	88T-17-7	162
	1.375	2.5	10.75	88T-17-13	171
	1.875	2.5	11.25	88T-17-17	180
2.375	1.375	2.5	11.25	88T-23-13	180
	1.875	2.5	11.75	88T-23-17	188
	2.375	3	12.75	88T-23-23	200
2.875	1.375	3	12.25	88T-27-13	191
	1.875	3.5	13.25	88T-27-17	203
	2.375	3.5	13.75	88T-27-23	212
3.375	1.875	3.5	13.75	88T-33-17	212
	2.375	4	14.75	88T-33-23	223
	2.875	4	15.25	88T-33-27	232
3.875	1.875	3.5	14.25	88T-37-17	220
	2.375	4	15.25	88T-37-23	232
	2.875	4	15.75	88T-37-27	241
4.875	2.375	4	16.25	88T-47-23	250
	2.875	4	16.75	88T-47-27	258
	3.375	4.5	17.75	88T-47-33	270

X-2	X-1 = 0.875			7.875 x 11.875	
	B	C	H	ITEM NUMBER	NET WT.
1.375	0.875	2.5	9.75	812T-13-7	237
	1.375	3	10.75	812T-13-13	254
	1.875	3	11.25	812T-13-17	268
1.875	0.875	2.5	10.25	812T-17-7	250
	1.375	3	11.25	812T-17-13	268
	1.875	3.5	12.25	812T-17-17	285
2.375	1.375	3	11.75	812T-23-13	281
	1.875	3.5	12.75	812T-23-17	298
	2.375	3.5	13.25	812T-23-23	312
2.875	1.375	3	12.25	812T-27-13	294
	1.875	3.5	13.25	812T-27-17	312
	2.375	3.5	13.75	812T-27-23	325
3.375	1.875	3.5	13.75	812T-33-17	325
	2.375	4	14.75	812T-33-23	342
	2.875	4	15.25	812T-33-27	355
3.875	1.875	3.5	14.25	812T-37-17	338
	2.375	4	15.25	812T-37-23	355
	2.875	4	15.75	812T-37-27	369
4.875	2.375	4	16.25	812T-47-23	382
	2.875	4	16.75	812T-47-27	395
	3.375	4.5	17.75	812T-47-33	413

NOTE: Stripper bolts, puller pins and spring shown are not included. When gating directly into the cavity from a top runner, the 3-plate "T" Series assembly may be used. It incorporates an additional runner stripper plate ("X-1") to facilitate automatic removal of the runner from the mold.

The "X-1" and "X-2" Plates have standard shoulder bushings and ride on standard leader pins. (When heavy "X-2" Plates are required, moldmaker may want to specify larger diameter leader pins and have them relocated. Contact customer service for a quotation to your specifications). The "X-1" Plate is supplied without a center hole. A standard sprue bushing long enough to extend through the "X-1" Plate is provided to allow the moldmaker to finish the sprue bushing hole as desired, or to install a recessed bushing to give the shortest main sprue length for minimum stripper plate movement.

Detailed dimensions for the "T" Series are identical to corresponding size "A" Series Mold Bases. Center sprue puller pin and pin holes as well as the socket head cap screws in the "A" — Clamping Plate are omitted since they are not required.