

# 23<sup>3</sup>/<sub>4</sub>" T-Series Mold Bases

### NO. 1 OR NO. 2 STEEL ASSEMBLIES

All plates above ejector housing are No. 1 or No. 2 Steel, respectively.

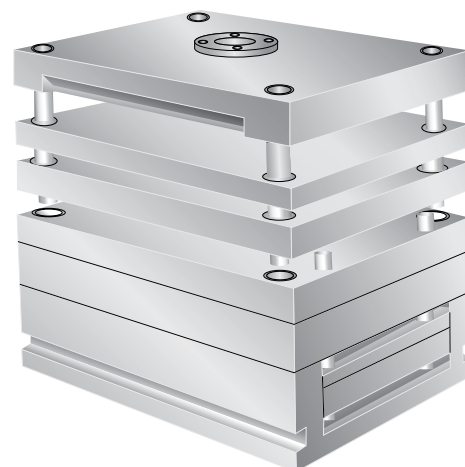
### NO. 3 STEEL ASSEMBLIES

"X-1", "X-2" and "B" Plates are No. 3 Steel.

"A" -Clamping and Support Plates are No. 2 Steel

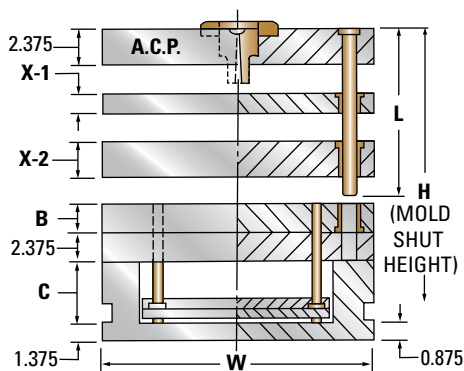
### NO. 7 STEEL ASSEMBLIES

Any or all plates available as requested.



For detailed dimensions, see corresponding size "A" Series Mold Bases.

**NOTE:** Clamp slots for 23.75" wide bases will be type B, not type D as shown in photo.



X-1 = 1.375				23.75 x 23.75	
X-2	B	C	H	ITEM NUMBER	NET WT.
1.875	1.375	3	13.75	2424T-17-13	2021
	1.875	3	14.25	2424T-17-17	2101
	2.375	3.5	15.25	2424T-17-23	2194
2.375	1.375	3.5	14.75	2424T-23-13	2114
	1.875	3.5	15.25	2424T-23-17	2194
	2.375	3.5	15.75	2424T-23-23	2274
2.875	1.375	3.5	15.25	2424T-27-13	2194
	1.875	3.5	15.75	2424T-27-17	2274
	2.375	3.5	16.25	2424T-27-23	2353
3.375	1.875	4	16.75	2424T-33-17	2366
	2.375	4	17.25	2424T-33-23	2446
	2.875	4.5	18.25	2424T-33-27	2538
3.875	1.875	4	17.25	2424T-37-17	2446
	2.375	4.5	18.25	2424T-37-23	2538
	2.875	4.5	18.75	2424T-37-27	2618
4.875	2.375	4.5	19.25	2424T-47-23	2698
	2.875	4.5	19.75	2424T-47-27	2778
	3.375	4.5	20.25	2424T-47-33	2858
5.875	2.875	4.5	20.75	2424T-57-27	2938
	3.875	4.5	21.75	2424T-57-37	3098
	4.875	4.5	22.75	2424T-57-47	3258

X-1 = 1.375				23.75 x 29.5	
X-2	B	C	H	ITEM NUMBER	NET WT.
1.875	1.375	3	13.75	2429T-17-13	2510
	1.875	3	14.25	2429T-17-17	2610
	2.375	3.5	15.25	2429T-17-23	2725
2.375	1.375	3.5	14.75	2429T-23-13	2625
	1.875	3.5	15.25	2429T-23-17	2725
	2.375	3.5	15.75	2429T-23-23	2824
2.875	1.375	3.5	15.25	2429T-27-13	2725
	1.875	3.5	15.75	2429T-27-17	2824
	2.375	3.5	16.25	2429T-27-23	2923
3.375	1.875	4	16.75	2429T-33-17	2939
	2.375	4	17.25	2429T-33-23	3038
	2.875	4.5	18.25	2429T-33-27	3153
3.875	1.875	4	17.25	2429T-37-17	3038
	2.375	4.5	18.25	2429T-37-23	3153
	2.875	4.5	18.75	2429T-37-27	3252
4.875	2.375	4.5	19.25	2429T-47-23	3351
	2.875	4.5	19.75	2429T-47-27	3451
	3.375	4.5	20.25	2429T-47-33	3550
5.875	2.875	4.5	20.75	2429T-57-27	3649
	3.875	4.5	21.75	2429T-57-37	3848
	4.875	4.5	22.75	2429T-57-47	4046

X-1 = 1.375				23.75 x 35.5	
X-2	B	C	H	ITEM NUMBER	NET WT.
1.875	1.375	3	13.75	2435T-17-13	3021
	1.875	3	14.25	2435T-17-17	3140
	2.375	3.5	15.25	2435T-17-23	3279
2.375	1.375	3.5	14.75	2435T-23-13	3159
	1.875	3.5	15.25	2435T-23-17	3279
	2.375	3.5	15.75	2435T-23-23	3398
2.875	1.375	3.5	15.25	2435T-27-13	3279
	1.875	3.5	15.75	2435T-27-17	3398
	2.375	3.5	16.25	2435T-27-23	3518
3.375	1.875	4	16.75	2435T-33-17	3536
	2.375	4	17.25	2435T-33-23	3656
	2.875	4.5	18.25	2435T-33-27	3794
3.875	1.875	4	17.25	2435T-37-17	3656
	2.375	4.5	18.25	2435T-37-23	3794
	2.875	4.5	18.75	2435T-37-27	3914
4.875	2.375	4.5	19.25	2435T-47-23	4033
	2.875	4.5	19.75	2435T-47-27	4152
	3.375	4.5	20.25	2435T-47-33	4272
5.875	2.875	4.5	20.75	2435T-57-27	4391
	3.875	4.5	21.75	2435T-57-37	4630
	4.875	4.5	22.75	2435T-57-47	4869

**WHEN ORDERING, PLEASE SPECIFY:**

- Quantity & Item Number
- No. 1, No. 2, No. 3, or No. 7 Steel
- Locating Ring Item Number
- E, O and R Dimensions
- L Dimension (Leader Pin Length)
- Method of Shipment

**NOTE:** For 3-Plate Extension Bushings, see page 195.