

19 1/2" T-Series Mold Bases

NO. 1 OR NO. 2 STEEL ASSEMBLIES

All plates above ejector housing are No. 1 or No. 2 Steel, respectively.

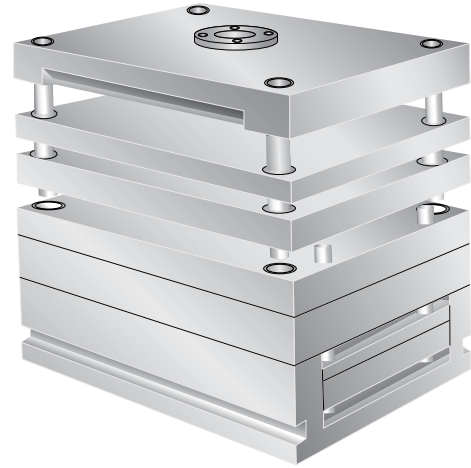
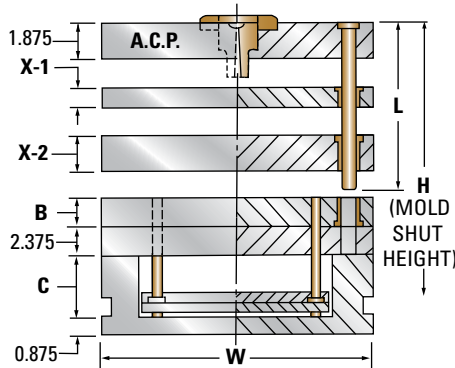
NO. 3 STEEL ASSEMBLIES

"X-1", "X-2" and "B" Plates are No. 3 Steel.

"A" -Clamping and Support Plates are No. 2 Steel.

NO. 7 STEEL ASSEMBLIES

Any or all plates available as requested.



For detailed dimensions, see corresponding size "A" Series Mold Bases.

X-1 = 1.375				19.5 x 23.75		X-1 = 1.375				19.5 x 29.5		X-1 = 1.375				19.5 x 35.5	
X-2	B	C	H	ITEM NUMBER	NET WT.	X-2	B	C	H	ITEM NUMBER	NET WT.	X-2	B	C	H	ITEM NUMBER	NET WT.
1.875	1.375	3	12.75	1924T-17-13	1533	1.875	1.375	3	12.75	1929T-17-13	1903	1.875	1.375	3	12.75	1935T-17-13	2291
	1.875	3	13.25	1924T-17-17	1598		1.875	3	13.25	1929T-17-17	1985		1.875	3	13.25	1935T-17-17	2389
	2.375	3.5	14.25	1924T-17-23	1676		2.375	3.5	14.25	1929T-17-23	2082		2.375	3.5	14.25	1935T-17-23	2506
2.375	1.375	3.5	13.75	1924T-23-13	1611	2.375	1.375	3.5	13.75	1929T-23-13	2001	2.375	1.375	3.5	13.75	1935T-23-13	2408
	1.875	3.5	14.25	1924T-23-17	1676		1.875	3.5	14.25	1929T-23-17	2082		1.875	3.5	14.25	1935T-23-17	2506
	2.375	3.5	14.75	1924T-23-23	1742		2.375	3.5	14.75	1929T-23-23	2164		2.375	3.5	14.75	1935T-23-23	2604
2.875	1.375	3.5	14.25	1924T-27-13	1676	2.875	1.375	3.5	14.25	1929T-27-13	2082	2.875	1.375	3.5	14.25	1935T-27-13	2506
	1.875	3.5	14.75	1924T-27-17	1742		1.875	3.5	14.75	1929T-27-17	2164		1.875	3.5	14.75	1935T-27-17	2604
	2.375	3.5	15.25	1924T-27-23	1808		2.375	3.5	15.25	1929T-27-23	2245		2.375	3.5	15.25	1935T-27-23	2702
3.375	1.875	4	15.75	1924T-33-17	1820	3.375	1.875	4	15.75	1929T-33-17	2261	3.375	1.875	4	15.75	1935T-33-17	2721
	2.375	4	16.25	1924T-33-23	1886		2.375	4	16.25	1929T-33-23	2342		2.375	4	16.25	1935T-33-23	2819
	2.875	4.5	17.25	1924T-33-27	1964		2.875	4.5	17.25	1929T-33-27	2439		2.875	4.5	17.25	1935T-33-27	2936
3.875	1.875	4	16.25	1924T-37-17	1886	3.875	1.875	4	16.25	1929T-37-17	2342	3.875	1.875	4	16.25	1935T-37-17	2819
	2.375	4.5	17.25	1924T-37-23	1964		2.375	4.5	17.25	1929T-37-23	2439		2.375	4.5	17.25	1935T-37-23	2936
	2.875	4.5	17.75	1924T-37-27	2030		2.875	4.5	17.75	1929T-37-27	2521		2.875	4.5	17.75	1935T-37-27	3034
4.875	2.375	4.5	18.25	1924T-47-23	2095	4.875	2.375	4.5	18.25	1929T-47-23	2602	4.875	2.375	4.5	18.25	1935T-47-23	3132
	2.875	4.5	18.75	1924T-47-27	2161		2.875	4.5	18.75	1929T-47-27	2684		2.875	4.5	18.75	1935T-47-27	3230
	3.375	4.5	19.25	1924T-47-33	2226		3.375	4.5	19.25	1929T-47-33	2765		3.375	4.5	19.25	1935T-47-33	3328
5.875	2.875	4.5	19.75	1924T-57-27	2292	5.875	2.875	4.5	19.75	1929T-57-27	2847	5.875	2.875	4.5	19.75	1935T-57-27	3426
	3.875	4.5	20.75	1924T-57-37	2423		3.875	4.5	20.75	1929T-57-37	3010		3.875	4.5	20.75	1935T-57-37	3622
	4.875	4.5	21.75	1924T-57-47	2554		4.875	4.5	21.75	1929T-57-47	3173		4.875	4.5	21.75	1935T-57-47	3818

WHEN ORDERING, PLEASE SPECIFY:

- Quantity & Item Number
- No. 1, No. 2, No. 3, or No. 7 Steel
- Locating Ring Item Number
- E, O and R Dimensions
- L Dimension (Leader Pin Length)
- Method of Shipment

NOTE: For 3-Plate Extension Bushings, see page 195.