

# 16 1/2" T-Series Mold Bases

### NO. 1 OR NO. 2 STEEL ASSEMBLIES

All plates above ejector housing are No. 1 or No. 2 Steel, respectively.

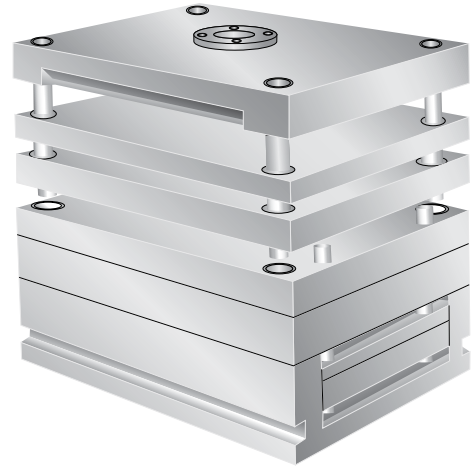
### NO. 3 STEEL ASSEMBLIES

"X-1", "X-2" and "B" Plates are No. 3 Steel.

"A" -Clamping and Support Plates are No. 2 Steel.

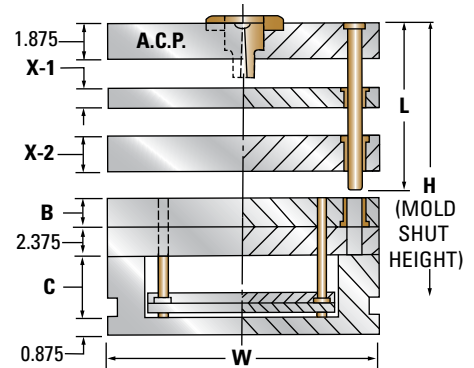
### NO. 7 STEEL ASSEMBLIES

Any or all plates available as requested.



X-1 = 1.375				16.5 x 23.75	
X-2	B	C	H	ITEM NUMBER	NET WT.
1.875	1.375	3	12.75	1724T-17-13	1300
	1.875	3.5	13.75	1724T-17-17	1369
	2.375	3.5	14.25	1724T-17-23	1424
2.375	1.375	3.5	13.75	1724T-23-13	1369
	1.875	3.5	14.25	1724T-23-17	1424
	2.375	3.5	14.75	1724T-23-23	1480
2.875	1.375	3.5	14.25	1724T-27-13	1424
	1.875	3.5	14.75	1724T-27-17	1480
	2.375	3.5	15.25	1724T-27-23	1535
3.375	1.875	4	15.75	1724T-33-17	1548
	2.375	4	16.25	1724T-33-23	1603
	2.875	4.5	17.25	1724T-33-27	1671
3.875	1.875	4	16.25	1724T-37-17	1603
	2.375	4.5	17.25	1724T-37-23	1671
	2.875	4.5	17.75	1724T-37-27	1727
4.875	2.375	4.5	18.25	1724T-47-23	1782
	2.875	4.5	18.75	1724T-47-27	1838
	3.375	4.5	19.25	1724T-47-33	1893
5.875	2.875	4.5	19.75	1724T-57-27	1949
	3.875	4.5	20.75	1724T-57-37	2060
	4.875	4.5	21.75	1724T-57-47	2171

X-1 = 1.375				16.5 x 29.5	
X-2	B	C	H	ITEM NUMBER	NET WT.
1.875	1.375	3	12.75	1729T-17-13	1615
	1.875	3.5	13.75	1729T-17-17	1700
	2.375	3.5	14.25	1729T-17-23	1769
2.375	1.375	3.5	13.75	1729T-23-13	1700
	1.875	3.5	14.25	1729T-23-17	1769
	2.375	3.5	14.75	1729T-23-23	1838
2.875	1.375	3.5	14.25	1729T-27-13	1769
	1.875	3.5	14.75	1729T-27-17	1838
	2.375	3.5	15.25	1729T-27-23	1907
3.375	1.875	4	15.75	1729T-33-17	1922
	2.375	4	16.25	1729T-33-23	1991
	2.875	4.5	17.25	1729T-33-27	2076
3.875	1.875	4	16.25	1729T-37-17	1991
	2.375	4.5	17.25	1729T-37-23	2076
	2.875	4.5	17.75	1729T-37-27	2145
4.875	2.375	4.5	18.25	1729T-47-23	2214
	2.875	4.5	18.75	1729T-47-27	2283
	3.375	4.5	19.25	1729T-47-33	2352
5.875	2.875	4.5	19.75	1729T-57-27	2421
	3.875	4.5	20.75	1729T-57-37	2559
	4.875	4.5	21.75	1729T-57-47	2696



For detailed dimensions, see corresponding size "A" Series Mold Bases.

**NOTE:** For 3-Plate Extension Bushings, see page 195.

### WHEN ORDERING, PLEASE SPECIFY:

- Quantity & Item Number
- No. 1, No. 2, No. 3, or No. 7 Steel
- Locating Ring Item Number
- E, O and R Dimensions
- L Dimension (Leader Pin Length)
- Method of Shipment