

# 1 7/8" T-Series Mold Bases

## NO. 1 OR NO. 2 STEEL ASSEMBLIES

All plates above ejector housing are No. 1 or No. 2 Steel, respectively.

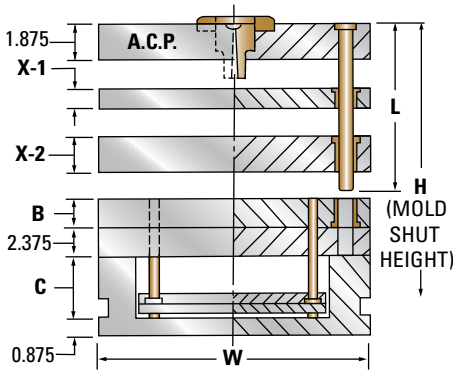
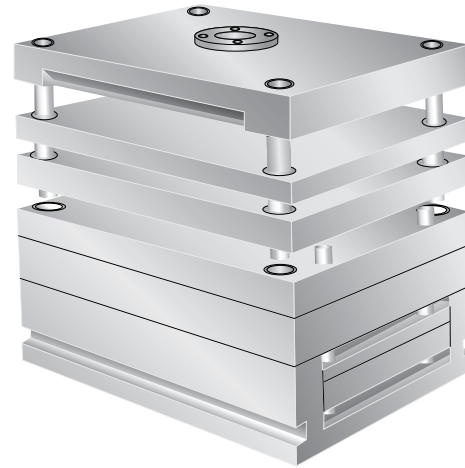
## NO. 3 STEEL ASSEMBLIES

"X-1", "X-2" and "B" Plates are No. 3 Steel.

"A" -Clamping and Support Plates are No. 2 Steel.

## NO. 7 STEEL ASSEMBLIES

Any or all plates available as requested.



For detailed dimensions, see corresponding size "A" Series Mold Bases.

X-1 = 0.875				14.875 x 17.875		X-1 = 1.375				14.875 x 23.75		X-1 = 1.375				14.875 x 29.5	
X-2	B	C	H	ITEM NUMBER	NET WT.	X-2	B	C	H	ITEM NUMBER	NET WT.	X-2	B	C	H	ITEM NUMBER	NET WT.
1.875	1.375	3	12.25	1518T-17-13	847	1.875	1.375	3	12.75	1524T-17-13	1175	1.875	1.375	3	12.75	1529T-17-13	1459
	1.875	3.5	13.25	1518T-17-17	894		1.875	3.5	13.75	1524T-17-17	1237		1.875	3.5	13.75	1529T-17-17	1537
	2.375	3.5	13.75	1518T-17-23	931		2.375	3.5	14.25	1524T-17-23	1287		2.375	3.5	14.25	1529T-17-23	1599
2.375	1.375	3.5	13.25	1518T-23-13	894	2.375	1.375	3.5	13.75	1524T-23-13	1237	2.375	1.375	3.5	13.75	1529T-23-13	1537
	1.875	3.5	13.75	1518T-23-17	931		1.875	3.5	14.25	1524T-23-17	1287		1.875	3.5	14.25	1529T-23-17	1599
	2.375	3.5	14.25	1518T-23-23	969		2.375	3.5	14.75	1524T-23-23	1337		2.375	3.5	14.75	1529T-23-23	1661
2.875	1.375	3.5	13.75	1518T-27-13	931	2.875	1.375	3.5	14.25	1524T-27-13	1287	2.875	1.375	3.5	14.25	1529T-27-13	1599
	1.875	3.5	14.25	1518T-27-17	969		1.875	3.5	14.75	1524T-27-17	1337		1.875	3.5	14.75	1529T-27-17	1661
	2.375	3.5	14.75	1518T-27-23	1007		2.375	3.5	15.25	1524T-27-23	1387		2.375	3.5	15.25	1529T-27-23	1723
3.375	1.875	4	15.25	1518T-33-17	1016	3.375	1.875	4	15.75	1524T-33-17	1400	3.375	1.875	4	15.75	1529T-33-17	1739
	2.375	4	15.75	1518T-33-23	1054		2.375	4	16.25	1524T-33-23	1450		2.375	4	16.25	1529T-33-23	1801
	2.875	4.5	16.75	1518T-33-27	1101		2.875	4.5	17.25	1524T-33-27	1513		2.875	4.5	17.25	1529T-33-27	1879
3.875	1.875	4	15.75	1518T-37-17	1054	3.875	1.875	4	16.25	1524T-37-17	1450	3.875	1.875	4	16.25	1529T-37-17	1801
	2.375	4.5	16.75	1518T-37-23	1101		2.375	4.5	17.25	1524T-37-23	1513		2.375	4.5	17.25	1529T-37-23	1879
	2.875	4.5	17.25	1518T-37-27	1139		2.875	4.5	17.75	1524T-37-27	1563		2.875	4.5	17.75	1529T-37-27	1941
4.875	2.375	4.5	17.75	1518T-47-23	1176	4.875	2.375	4.5	18.25	1524T-47-23	1613	4.875	2.375	4.5	18.25	1529T-47-23	2003
	2.875	4.5	18.25	1518T-47-27	1214		2.875	4.5	18.75	1524T-47-27	1663		2.875	4.5	18.75	1529T-47-27	2065
	3.375	4.5	18.75	1518T-47-33	1252		3.375	4.5	19.25	1524T-47-33	1713		3.375	4.5	19.25	1529T-47-33	2128
5.875	2.875	4.5	19.25	1518T-57-27	1289	5.875	2.875	4.5	19.75	1524T-57-27	1763	5.875	2.875	4.5	19.75	1529T-57-27	2190
	3.875	4.5	20.25	1518T-57-37	1365		3.875	4.5	20.75	1524T-57-37	1863		3.875	4.5	20.75	1529T-57-37	2314
	4.875	4.5	21.25	1518T-57-47	1440		4.875	4.5	21.75	1524T-57-47	1963		4.875	4.5	21.75	1529T-57-47	2438

### WHEN ORDERING, PLEASE SPECIFY:

- Quantity & Item Number
- No. 1, No. 2, No. 3, or No. 7 Steel
- Locating Ring Item Number
- E, O and R Dimensions
- L Dimension (Leader Pin Length)
- Method of Shipment

NOTE: For 3-Plate Extension Bushings, see page 195.