

14⁷/₈" Stripper Plate Mold Bases

NO. 1 & NO. 2 STEEL ASSEMBLIES

All plates above ejector housing are No. 1 or No. 2 Steel, respectively.

NO. 3 STEEL ASSEMBLIES

"AX", "X", and "BX" plates are No. 3 Steel.

Top clamping and support plates are No. 2 Steel.

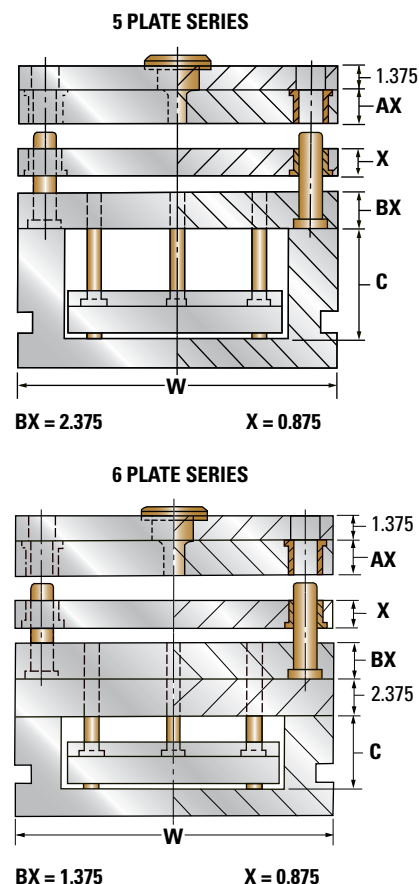
NO. 7 STEEL ASSEMBLIES

Any or all plates available as requested.

W	L	AX	C	5 PLATE		6 PLATE	
				ITEM NUMBER	NET WT.	ITEM NUMBER	NET WT.
14.875	17.875	1.375	3	1518X-5-13	668	1518X-6-13	772
		1.875	3.5	1518X-5-17	715	1518X-6-17	819
		2.375	3.5	1518X-5-23	752	1518X-6-23	856
		2.875	4	1518X-5-27	800	1518X-6-27	904
		3.375	4	1518X-5-33	837	1518X-6-33	941
		3.875	4.5	1518X-5-37	885	1518X-6-37	989
	23.75	1.375	3	1524X-5-13	887	1524X-6-13	1025
		1.875	3.5	1524X-5-17	950	1524X-6-17	1088
		2.375	3.5	1524X-5-23	1000	1524X-6-23	1138
		2.875	4	1524X-5-27	1063	1524X-6-27	1201
		3.375	4	1524X-5-33	1112	1524X-6-33	1250
	29.5	3.875	4.5	1524X-5-37	1175	1524X-6-37	1313
		1.375	3	1529X-5-13	1102	1529X-6-13	1273
		1.875	3.5	1529X-5-17	1180	1529X-6-17	1351
		2.375	3.5	1529X-5-23	1242	1529X-6-23	1413
2.875		4	1529X-5-27	1320	1529X-6-27	1491	
		3.375	4	1529X-5-33	1382	1529X-6-33	1553
		3.875	4.5	1529X-5-37	1460	1529X-6-37	1631

NOTE: Mold bases listed above may be ordered with "X", "AX", and "BX" plate thicknesses other than those shown in chart. Prices on request.

Refer to corresponding size "A" Series Mold Base for detail dimensions.



WHEN ORDERING, PLEASE SPECIFY:

- Quantity & Item Number
- No. 1, No. 2, No. 3, or No. 7 Steel
- Locating Ring Item Number
- E, O and R Dimensions
- Method of Shipment