

Guided Ejection Systems



Guided Ejection Systems hold the ejector assembly in alignment and support the weight of the ejector assembly throughout the molding cycle – greatly reducing wear on ejection components and preventing cocking of the ejector assembly.

FOR QUOTING OR ORDERING, SPECIFY:

Guided Ejection System Type

- System 1
- System 2

Quantity (2 or 4): _____

Guided Ejection Bushing Type

- Bronze-Plated Steel Bushings
- Self-Lubricating Bushings

Guided Ejection

Position:

- STD Specify

Recommended position from table provided standard (see opposite page). If a different position is required, specify below.

GEx _____

GEy _____

Diameter:

- STD Specify

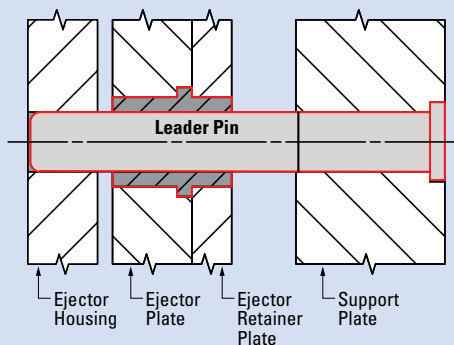
Recommended diameter from table provided standard. If a different diameter is required, it will require a positioning change; specify below.

Available diameters:

- 0.750
- 0.875
- 1.000
- 1.250

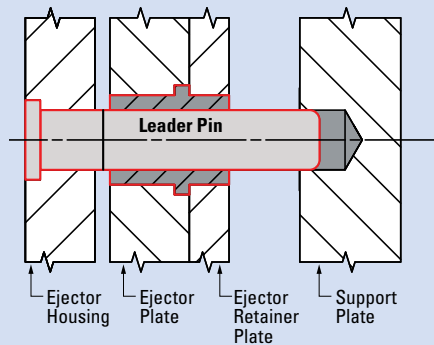
SYSTEM 1

When pins are installed in the support plate, the ejector housing can be removed from the mold without removing ejector plates. This permits easy access to service the ejector system.

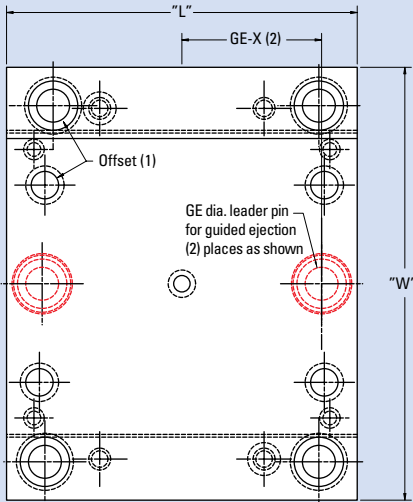


SYSTEM 2

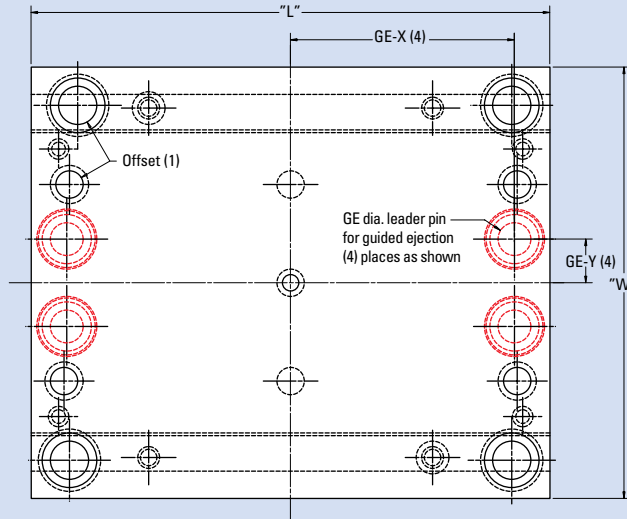
Pins installed in the ejector housing permit fast installation. When the ejector housing is removed from the mold base, the complete ejector assembly is removed.



Guided Ejection Systems



**"B" HALF OF MOLD
FOR 88, 812 & 108 MOLD BASE
SIZE ONLY**



**"B" HALF OF MOLD
FOR 1012 - 2435 BASES**

Guided Ejection Positions

PIN DIAMETER (RECOMMENDED)	BASE SIZE	GE _x	GE _y
0.750	88	3.000	Center
	812	5.000	Center
	108	3.062	Center
	1012	5.000	1.000
	1016	7.062	1.000
	1020	9.062	1.000
	1112	5.062	1.625
	1114	6.062	1.625
	1118	8.062	1.625
0.875	1123	10.812	1.625
	212	5.000	1.750
	1215	6.500	1.750
	1220	9.000	1.750
	1223	10.750	1.750
	1315	6.500	2.375
	1318	8.000	2.375
	1321	9.375	2.375
	1323	10.750	2.375
	1326	12.000	2.375
	1329	13.750	2.375

PIN DIAMETER (RECOMMENDED)	BASE SIZE	GE _x	GE _y	
1.000	1518	7.875	2.375	
	1524	10.812	2.375	
	1529	13.688	2.375	
	1616	6.938	2.875	
	1620	8.938	2.875	
	1623	10.688	2.875	
	1626	11.938	2.875	
	1629	13.688	2.875	
	1635	16.688	2.875	
	1724	10.812	3.125	
	1729	13.688	3.125	
	1818	7.938	3.875	
	1820	8.938	3.875	
	1823	10.688	3.875	
	1826	11.038	3.875	
	1829	13.688	3.875	
	1835	16.688	3.875	
	1.250	1924	10.812	4.625
		1929	13.688	4.625
1935		16.688	4.625	
2424		10.688	6.125	
2429		13.562	6.125	
2435	16.562	6.125		