

Clamp Slots



Features supplied as standard unless otherwise specified.

FOR QUOTING OR ORDERING, SPECIFY:

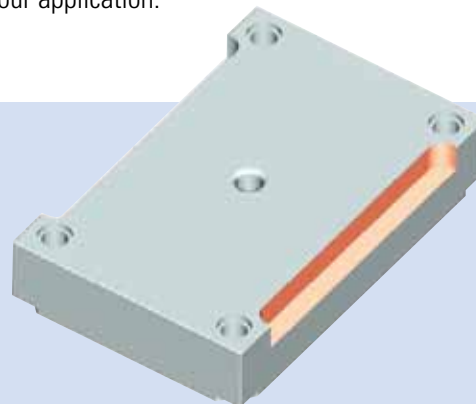
Clamp Slot Type

- Type A** - Machined when Top Clamping Plate is 0.875 or 1.375
- Type B** - Machined in plates that are 2.375 or thicker
- Type C** - Machined only when specified by a customer and top clamp plate is 1.375
- Type D** - Machined plates that are 1.875 thick

Other options include:

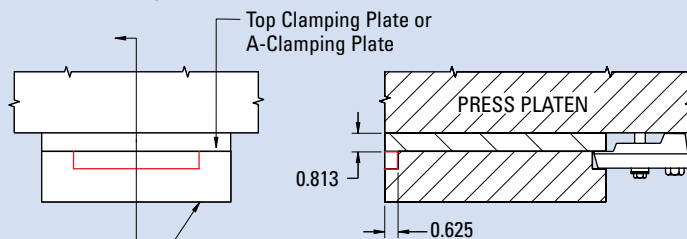
- Omit upper clamp slot
- Omit lower clamp slot (3-piece housing supplied)
- Machine entire length
- Machine all four sides

Clamp Slots facilitate clamping the mold to the platen of the press. D-M-E American Standard Mold Base offers four slot types (shown below) to ensure the best fit for the requirements of your application.



Type A

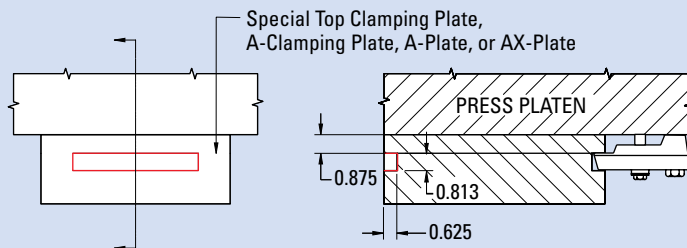
Machined when Top Clamping Plate is 0.875 or 1.375



NOTE: When this plate is 0.875 thick, the slots will be machined through the thickness.

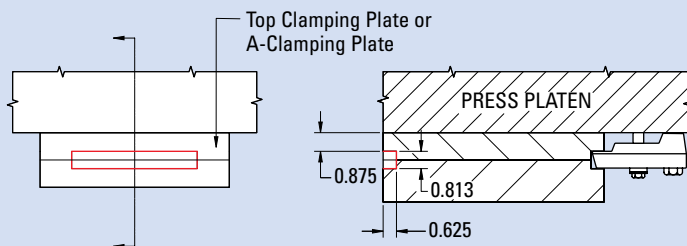
Type B

Machined in plates that are 2.375 or thicker



Type C

Machined only when specified by a customer



Type D

Machined plates that are 1.875 thick

