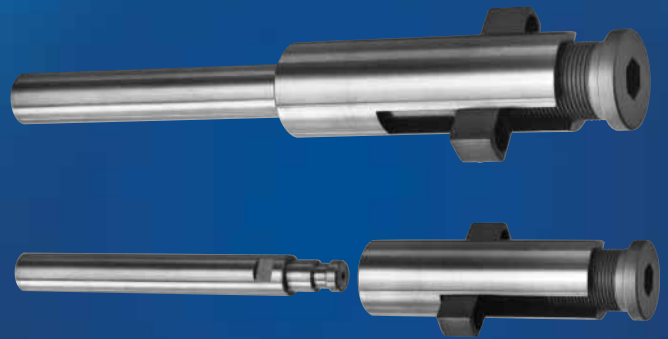


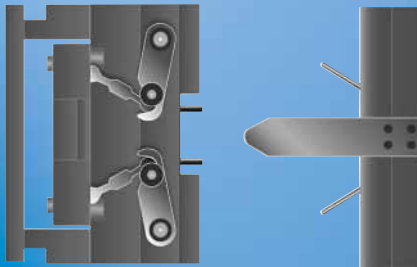
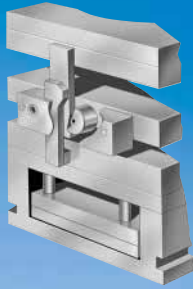
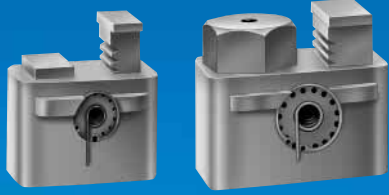
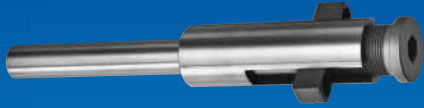
D-M-E Internal Latch Lock, Toggle-Lok, Jiffy-Jector

PRECISION CONTROL
OF MOLD PLATE OPERATION



Internal Latch Lock, Toggle-Lok, Jiffy-Jector

Table of Contents



Internal Latch Lock

<i>Benefits</i>	105
<i>Selection Table</i>	105
<i>Application Design Guidelines</i>	106
<i>Set-Up Information</i>	107
<i>Component Information</i>	108-110
<i>Optional Guided Ejection & Return Sleeve</i>	111
<i>Accelerated Knock-Outs</i>	112
<i>Accelerated Ejectors</i>	113-114
<i>Early Ejector Return Assembly</i>	115-116
<i>Jiffy Latch-Lok™ Assemblies</i>	117-118
<i>Latch Locks & Baffle Bars</i>	119-120

Toggle-Lok

<i>Operating Sequence</i>	121
<i>Assembly Specifications</i>	122
<i>Design Guidelines</i>	123
<i>Components</i>	124-126
<i>Special Order</i>	127
<i>Ordering Information</i>	128

Jiffy-Jector

<i>Benefits & Ordering Information</i>	129
<i>Design Guidelines</i>	130
<i>Operating Sequence & Installation Dimensions</i>	131
<i>Ejector Return Couplings</i>	132

Online Price Guide

Go to www.dme.net/prices for the latest pricing guide.