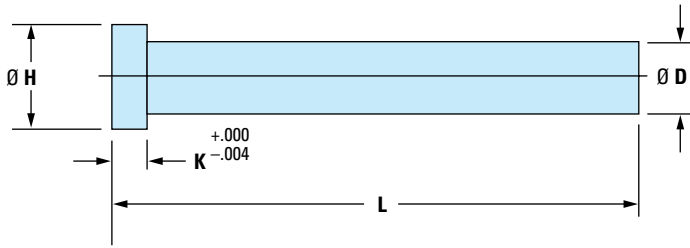


# MoldBasics™ INCH Ejector Pins – Straight – Nitrided



Manufactured from superior quality, thermal shock-resistant hotwork steel. Pin heads are hot forged and annealed for toughness. The pin surface is nitrided for wear resistance.

Fabricados en acero de calidad superior resistente a choque termico. Las cabezas son forjadas en caliente y aleadas para mejor resistencia. La superficie del perno es nitrurada para resistencia al desgaste.

## MoldBasics Inch Ejector Pins – Straight – Nitrided Pernos Expulsores Rectos Nitrurados – (MB-EJP-IHN)

ITEM NUMBER PREFIX (WITH DIAMETER) PREFIJO NÚMERO (CON DIÁMETRO)	D (INCH)	H (INCH)	K (INCH)	L = LENGTH (INCH)			
				06	10	14	18
MB-EJP-IHN-0062-__*	0.0625 (1/16)	0.250	0.125	⚡	⚡		
MB-EJP-IHN-0078-__*	0.0781 (5/64)	0.250	0.125	⚡	⚡		
MB-EJP-IHN-0093-__*	0.0937 (3/32)	0.250	0.125	⚡	⚡		
MB-EJP-IHN-0125-__*	0.1250 (1/8)	0.250	0.125	⚡	⚡		
MB-EJP-IHN-0156-__*	0.1562 (5/32)	0.281	0.156	⚡	⚡		
MB-EJP-IHN-0187-__*	0.1875 (3/16)	0.375	0.187	⚡	⚡	⚡	
MB-EJP-IHN-0250-__*	0.2500 (1/4)	0.437	0.187	⚡	⚡	⚡	
MB-EJP-IHN-0312-__*	0.3125 (5/16)	0.500	0.250	⚡	⚡	⚡	⚡
MB-EJP-IHN-0375-__*	0.3750 (3/8)	0.625	0.250	⚡	⚡	⚡	⚡
MB-EJP-IHN-0500-__*	0.5000 (1/2)	0.750	0.250	⚡	⚡	⚡	⚡
MB-EJP-IHN-0625-__*	0.6250 (5/8)	0.875	0.250		⚡	⚡	⚡
MB-EJP-IHN-0750-__*	0.7500 (3/4)	1.000	0.250		⚡	⚡	⚡

EJECTOR PIN SPECIFICATION		
Ø D	BODY DIAMETER DIÁMETRO PERNO	-0.0002 -0.0008
Ø H	HEAD DIAMETER DIÁMETRO CABEZA	
↔  K	HEAD THICKNESS ESPESOR CABEZA	
↔  L	LENGTH LONGITUD	
M	MATERIAL MATERIAL	SKD61/2344/H13
H	HEAT TREATMENT TRATAMIENTO TERMICO	HARDENED HRC 40-45
S	SURFACE TREATMENT TRATAMIENTO SUPERFICIE	NITRIDED HRC 65 MINIMUM

**QUANTITY DISCOUNTS:**  
Ejector pins, core pins, return pins and sprue puller pins. Discounts apply to current Net Prices. Standard sizes may be combined on one order for quantity discounts.

300 to 599 ..... Less 5%  
600 or more ..... Less 10%

**\*HOW TO ORDER:** Specify Item Number starting with the Item Number Prefix (with Diameter), then add L length. Include zeros and dashes.  
Examples: MB-EJP-IHN-0062-06, MB-EJP-IHN-0500-14

**\*PARA ORDENAR:** Especifique el número del articulo empezando con el número del prefijo, D Diámetro, y L Longitud, incluya ceros y guiones.  
Examples: MB-EJP-IHN-0062-06, MB-EJP-IHN-0500-14

**KEY TO CHART**

- ⚡ Items in stock
- Light Blue Box 2-3 week delivery
- White Box Contact D-M-E for quote