

## Comparison Chart

DESCRIPTION	DIAMETER	MATERIAL	HARDNESS	BODY CONDITION	HEAD CONDITION
EX Ejector Pins EX2 (1/32) through EX8 (7/64)	+0.003 -0.006	H13	Surface 65-74 HRC Core 40-45 HRC	Nitrided Minimum .001 deep	Annealed
EX Ejector Pins EX9 (1/8) through EX32 (31/64) lengths – 6" through 18"	-0.003 -0.006	H13	Surface 65-74 HRC Core 40-45 HRC	Nitrided Minimum .001 deep	Annealed
EX Ejector Pins EX9 (1/8) through EX32 (31/64) lengths – 25" through 36"	-0.003 -0.008	H13	Surface 65-74 HRC Core 40-45 HRC	Nitrided Minimum .001 deep	Annealed
EX Ejector Pins EX33 (1/2) through EX47 (1")	-0.003 -0.008	H13	Surface 65-74 HRC Core 40-45 HRC	Nitrided Minimum .001 deep	Annealed
THX Ejector Pins THX03 (3/64) through THX08 (7/64)	-0.000 -0.001	H13	Surface 65-74 HRC Core 50-55 HRC	Nitrided Minimum .001 deep	Annealed
THX Ejector Pins THX09 (1/8) through THX32 (31/64) lengths – 6" through 18"	-0.003 -0.006	H13	Surface 65-74 HRC Core 50-55 HRC	Nitrided Minimum .001 deep	Annealed
THX Ejector Pins THX33 (1/2) through THX47 (1")	-0.003 -0.008	H13	Surface 65-74 HRC Core 50-55 HRC	Nitrided Minimum .001 deep	Annealed
Keyed Ejector Pins	-0.003 -0.006   -0.003 -0.008	H13	Surface 65 min HRC Core 50-55 HRC	Nitrided	Annealed
EJP-IMH Close Tolerance Ejector Pins	-0.003 -0.005	M2	Core 58-62 HRC		Annealed
MoldBasics Ejector Pins	-0.002 -0.008	H13	Core 65 HRC MIN 40-45 HRC		
S Ejector Sleeves	+0.000 O.D. -0.010 +0.005 I.D. +0.000	H13	O.D. 65-74 HRC I.D. 30-35 HRC	Nitrided O.D. Minimum .001 deep	Annealed
SND Nitrided I.D. Ejector Sleeves	+0.000 O.D. -0.010 +0.005 I.D. +0.000	H13	O.D. 65-74 HRC I.D. 65-74 HRC	Nitrided O.D. & I.D. Minimum .001 deep	Annealed
Ejector Blades		M2	58-62 HRC		Annealed
C Core Pins	+0.008 -0.003	H13	Core 30-35 HRC	Through Hardened	3" length – Hard 6"-14" lengths – Annealed
CX High Hardness Core Pins	+0.008 -0.003	H13	Core 50-55 HRC	Through Hardened	3" length – Hard 6"-14" lengths – Annealed
PCL Performance High Conductivity Core Pins	+0.010 -0.000	Moldstar 150® (C18000)	90-98 HRB	not applicable	not applicable
Return Pins	+0.000 -0.001	H13	Surface 65-74 HRC Core 40-55 HRC	Nitrided Minimum .001 deep	Annealed
Sprue Puller Pins	+0.000 -0.001	H13	Surface 65-74 HRC Core 40-45 HRC	Nitrided Minimum .001 deep	Annealed

# Hardness Conversion Table and D-M-E Hardness Data

HARDNESS RANGE OF D-M-E STANDARDS	BRINELL 3000 Kg	ROCKWELL			SHORE SCLERO-SCOPE NO.	TENSILE STRENGTH (APPROX. P.S.I.)	HARDNESS RANGE OF D-M-E STANDARDS	BRINELL 3000 Kg	ROCKWELL			SHORE SCLERO-SCOPE NO.	TENSILE STRENGTH (APPROX. P.S.I.)
		C 150 Kg LOAD	B 100 Kg LOAD	15-N SUPER-FICIAL					C 150 Kg LOAD	B 100 Kg LOAD	15-N SUPER-FICIAL		
		80		96.5				362	39		80.0	52	177,000
		78		96.0				352	38		79.5	51	171,000
		76		95.5				342	37		79.0	50	166,000
EX, THX EJECTOR PINS		74		95.0			332	36		78.5	49	162,000	
		72		94.5			322	35		78.0	48	157,000	
Surface Hardness		70		94.0			313	34		77.0	47	153,000	
		69		93.5	96		305	33		76.5	46	148,000	
		67		93.0	95		297	32		76.0	44	148,000	
		66		92.5	92		290	31		75.5	43	140,000	
		65		92.0	91		283	30		75.0	42	136,000	
		64			88		276	29		74.5	41	132,000	
EJP-IMH EJECTOR PINS		63		91.5	87		270	28		74.0	—	129,000	
		62		91.0	85		265	27		73.5	40	126,000	
		61		90.5	83		260	26		72.5	38	123,000	
EJB-IMH EJECTOR BLADE Core Hardness	614	60		90.0	81		255	25		72.0	—	120,000	
	600	59		89.5	80		250	24		71.5	37	117,000	
	587	58			78		245	23	100	71.0	36	115,000	
	573	57		89.0	76		240	22	99	70.5	35	112,000	
	560	56		88.5	75		235	20	98	69.5	34	108,000	
	547	55		88.0	74	301,000	230	20	98	69.5	34	108,000	
CX CORE PINS, THX EJECTOR PINS, KEYPED EJECTOR PINS Core Hardness	534	54		87.5	72	291,000	201		94		31	98,000	
	522	53		87.0	71	282,000	197		93		30	95,000	
	509	52		86.5	69	273,000	192		92		29	93,000	
	496	51		86.0	68	264,000	187		91		—	90,000	
	484	50		85.5	67	255,000	183		90		28	89,000	
	472	49		85.0	66	246,000	179		89		27	87,000	
	460	48		84.5	64	237,000	174		88		27	87,000	
	448	47		84.0	63	229,000	170		87		26	83,000	
	437	46		83.5	62	221,000	167		86		—	81,000	
EX EJECTOR PINS	426	45		83.0	60	214,000	163		85		25	79,000	
	415	44		82.5	58	207,000	156		83		24	76,000	
	404	43		82.0	57	200,000	149		81		23	73,000	
Core Hardness	393	42		81.5	56	194,000	143		79		22	71,000	
	382	41		81.0	55	188,000	137		76		21	67,000	
	372	40		80.5	54	182,000	131		74		—	65,000	
C CORE PINS							192						
							187						
							183						
PCL PERFORMANCE CORE PINS							179						
							174						
							170						

INCH Pins, Sleeves, Blades | Hardness Conversion Table and D-M-E Hardness Data

# Custom Pins and Sleeves - Faxable Quote Form

**QUOTE FAX HOTLINES** or visit [www.dme.net](http://www.dme.net)

United States: 888-808-4363 • Canada: 800-461-9965 • International: 248-398-7394

## Custom Pins

Quantity: \_\_\_\_\_

Choose a pin type:

- EX** (35 - 43 HRC core hardness with 65 - 70 HRC case hardness)
- THX** (50 HRC - 55 HRC core hardness with 65 - 70 HRC case hardness)
- CX** (50 - 55 HRC through hard)
- C** (30 - 35 HRC through hard)

Material H-13

Other \_\_\_\_\_

Hardness \_\_\_\_\_ RC

Nitrided Yes  No

Comments \_\_\_\_\_

## Custom Sleeves

Quantity: \_\_\_\_\_

Nitride on OD (S)

Nitride on OD + ID (SND)

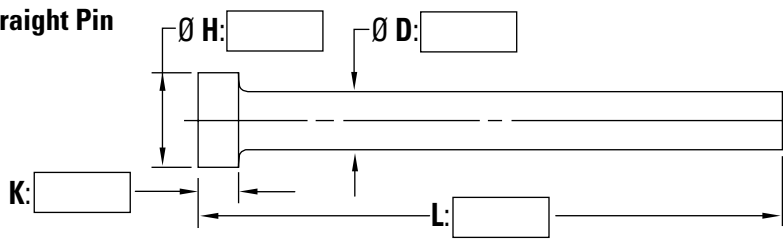
Material H-13

Other \_\_\_\_\_

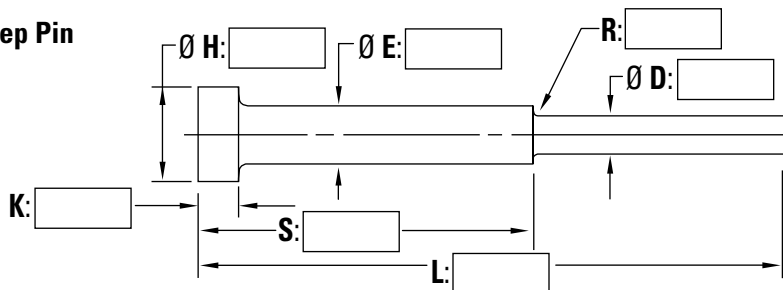
Hardness \_\_\_\_\_ RC

Comments \_\_\_\_\_

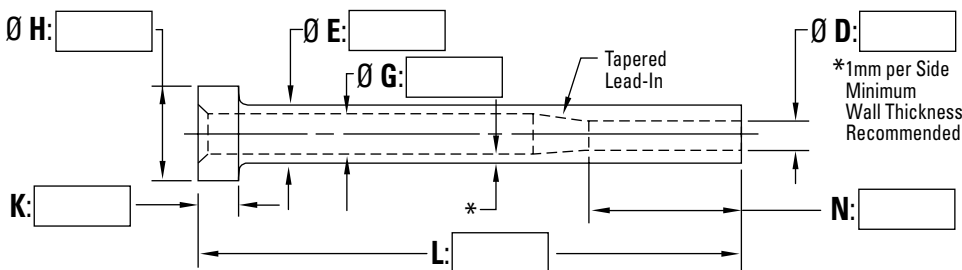
### Straight Pin



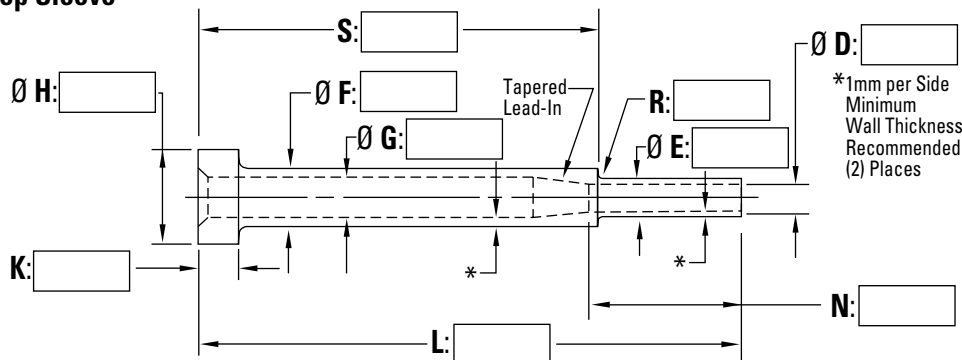
### Step Pin



### Sleeve



### Step Sleeve



<b>Company name:</b> _____	<b>D-M-E account #:</b> _____
<b>Contact name:</b> _____	<b>P.O. #:</b> _____
<b>Phone:</b> _____	<b>FAX:</b> _____
<b>Address:</b> _____	<b>E-mail:</b> _____
<b>City:</b> _____	<b>State/Province:</b> _____
<b>ZIP/Postal Code:</b> _____	<b>Country:</b> _____

### Shipping method:

- UPS Ground
- UPS 2nd Day Air
- UPS Next Day
- FedEx
- Other \_\_\_\_\_

INCH Pins, Sleeves, Blades | Custom Pins and Sleeves - Faxable Quote Form