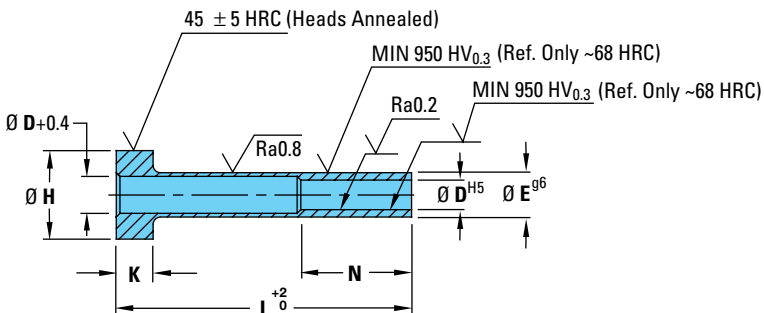


DIN Ejector Sleeves – Nitrided

DIN Ejector Sleeves – EJS-EHN

Mangas expulsoras | Extractores tubulares | Ejecteurs tubulaires | Auswerferhülsen

INFORMATION KEY:
D = Inside Diameter
E = Outside Diameter
H = Head Diameter
K = Head Thickness
L = Length
N = Bearing Length
Standard: DIN/ISO Type
Material: 1.2344 (AISI H13 Type) Steel
Surface Treatment: Nitrided
Max. Temp.: 500°-550°C (932°-1022°F)
Dimensions: Shown in Millimeters (mm)



ITEM PREFIX	D	E	H	K	N	L																								
						0075	0100	0125	0150	0175	0200	0225	0250	0275	0300	0350														
EJS-EHN (S)*	01.5	03.0	6	3	35																									
	01.7	03.0	6	3	35																									
	02.0	04.0	8	3	35				⚡	⚡																				
	02.2	04.0	8	3	35																									
	02.5	05.0	10	3	35				⚡	⚡																				
	02.7	05.0	10	3	45																									
	03.0	05.0	10	3	45			⚡	⚡	⚡	⚡																			
	03.2	05.0	10	3	45																									
	03.5	06.0	12	5	45			⚡	⚡	⚡	⚡																			
	03.7	06.0	12	5	45																									
	04.0	06.0	12	5	45			⚡	⚡	⚡	⚡	⚡																		
	04.2	08.0	14	5	45																									
	04.5	08.0	14	5	45																									
	05.0	08.0	14	5	45			⚡	⚡	⚡	⚡	⚡																		
	05.2	08.0	14	5	45																									
	06.0	10.0	16	5	45				⚡	⚡	⚡	⚡	⚡	⚡																
	06.2	10.0	16	5	45																									
	06.5	10.0	16	5	45																									
	08.0	12.0	18	7	45				⚡	⚡	⚡	⚡	⚡	⚡	⚡															
	08.2	12.0	18	7	45																									
	08.5	12.0	18	7	45																									
	10.0	14.0	22	7	45				⚡	⚡	⚡	⚡	⚡	⚡	⚡	⚡														
	10.5	14.0	22	7	55																									
	11.0	14.0	22	7	55																									
	12.0	16.0	22	7	55				⚡	⚡	⚡	⚡	⚡	⚡	⚡	⚡														
	12.5	16.0	22	7	55																									
	14.0	18.0	24	9	55																									
	16.0	20.0	26	9	55																									
18.0	22.0	28	9	55																										

*“(S)” is only a cross-reference to current D-M-E Europe Catalog item prefix numbers.

HOW TO ORDER: Specify Item Number with prefix, D diameter, and L length. Include zeros and dashes but omit decimals, as shown.

Prefix **D** **L**
EJS-EHN - [] - []

Example:
 Prefix **D** **L**
 EJS-EHN-020-0075

Example:
 Prefix **D** **L**
 EJS-EHN-120-0250

KEY TO CHART

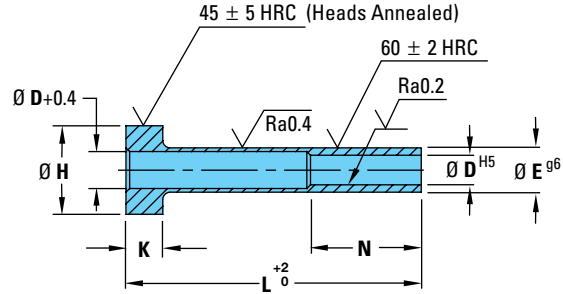
- Items in stock
- 2-3 week delivery
- Contact D-M-E for quote

DIN Ejector Sleeves – Hardened

DIN Ejector Sleeves – EJS-ELH

Mangas expulsoras | Extractores tubulares | Ejecteurs tubulaires | Auswerferhülsen

INFORMATION KEY:
D = Inside Diameter
E = Outside Diameter
H = Head Diameter
K = Head Thickness
L = Length
N = Bearing Length
Standard: DIN/ISO Type
Material: 1.2210 (AISI L2 Type) Steel
Surface Treatment: None (Through-Hardened)
Max. Temp.: 250°C (482°F)
Dimensions: Shown in Millimeters (mm)



ITEM PREFIX	D	E	H	K	N	L												
						0075	0100	0125	0150	0175	0200	0225	0250	0275	0300	0350	0400	0450
EJS-ELH (KS)*	01.5	03.0	6	3	35													
	01.7	03.0	6	3	35													
	02.0	04.0	8	3	35													
	02.2	04.0	8	3	35													
	02.5	05.0	10	3	35													
	02.7	05.0	10	3	45													
	03.0	05.0	10	3	45													
	03.2	05.0	10	3	45													
	03.5	06.0	12	5	45													
	03.7	06.0	12	5	45													
	04.0	06.0	12	5	45													
	04.2	08.0	14	5	45													
	04.5	08.0	14	5	45													
	05.0	08.0	14	5	45													
	05.2	08.0	14	5	45													
	05.5	08.0	14	5	45													
	06.0	10.0	16	5	45													
	06.2	10.0	16	5	45													
	06.5	10.0	16	5	45													
	08.0	12.0	18	7	45													
	08.2	12.0	18	7	45													
	08.5	12.0	18	7	45													
	10.0	14.0	22	7	45													
	10.5	14.0	22	7	55													
	11.0	14.0	22	7	55													
	12.0	16.0	22	7	45													
12.5	16.0	22	7	55														
14.0	18.0	24	9	55														
16.0	20.0	26	9	55														
18.0	22.0	28	9	55														

*“(KS)” is only a cross-reference to current D-M-E Europe Catalog item prefix numbers.

HOW TO ORDER: Specify Item Number with prefix, D diameter, and L length. Include zeros and dashes but omit decimals, as shown.

Prefix	D	L
EJS-ELH	- [] -	[]

<i>Example:</i>	<i>Example:</i>
Prefix D L EJS-ELH-020-0125	Prefix D L EJS-ELH-120-0150

KEY TO CHART

- Items in stock
- 2-3 week delivery
- Contact D-M-E for quote

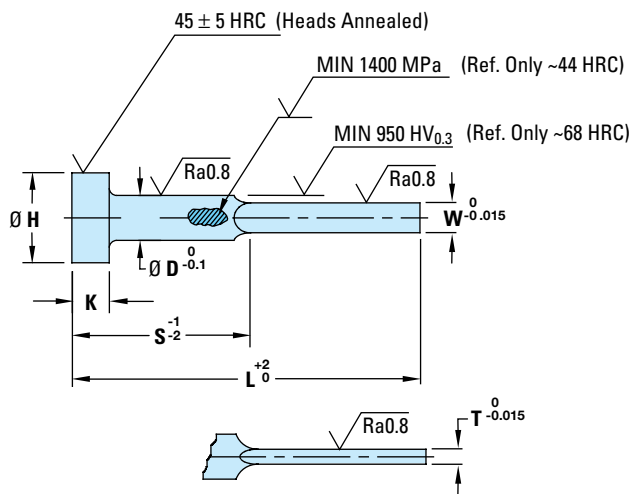
DIN Pins, Sleeves, Blades | DIN Ejector Sleeves – Hardened

DIN Ejector Blades – Nitrided

DIN Ejector Blades – EJB-EHN

Expulsores planos | Extractores laminares | Ejecteurs lames | Auswerferklingen

INFORMATION KEY:
D = Shoulder Diameter
H = Head Diameter
K = Head Thickness
L = Length
S = Shoulder Length
T = Blade Thickness
W = Blade Width
Standard: DIN/ISO Type
Material: 1.2344 (AISI H13 Type) Steel
Surface Treatment: Nitrided
Max. Temp.: 500°-550°C (932°-1022°F)
Dimensions: Shown in Millimeters (mm)



ITEM PREFIX	T	W	D	H	K	L									
						0060	0080	0100	0125	0160	0200	0250	0315	0400	
						S									
						30	40	50	63	80	100	125	160	200	
EJB-EHN (FW)*	01.0	03.5	4	8	3										
	01.0	03.8	4.2	8	3				⚡	⚡					
	01.0	04.5	5	10	3				⚡	⚡					
	01.0	05.5	6	12	5				⚡	⚡					
	01.2	03.5	4	8	3										
	01.2	03.8	4.2	8	3										
	01.2	04.5	5	10	3										
	01.2	05.5	6	12	5				⚡	⚡					
	01.2	07.5	8	14	5				⚡	⚡					
	01.5	04.5	5	10	5										
	01.5	05.5	6	12	5				⚡	⚡	⚡				
	01.5	07.5	8	14	5				⚡	⚡	⚡	⚡			
	01.5	09.5	10	16	3						⚡	⚡	⚡		
	01.8	09.5	10	16	5										
	02.0	05.5	6	12	5				⚡	⚡	⚡				
	02.0	07.5	8	14	5					⚡	⚡		⚡		
	02.0	09.5	10	16	5						⚡				
	02.0	11.5	12	18	7						⚡		⚡		
	02.0	12.0	12.5	18	7										
	02.0	15.5	16	22	7										
	02.5	11.5	12	20	7						⚡			⚡	
	02.5	12.0	12.5	18	7										
	02.5	15.5	16	22	7										

*“(FW)” is only a cross-reference to current D-M-E Europe Catalog item prefix numbers.

HOW TO ORDER: Specify Item Number with prefix, T thickness, W width, and L length. Include zeros and dashes but omit decimals, as shown.

Prefix T W L
EJB-EHN - [] - [] - []

Example:
 Prefix T W L
 EJB-EHN-010-038-0125

Example:
 Prefix T W L
 EJB-EHN-020-115-0200

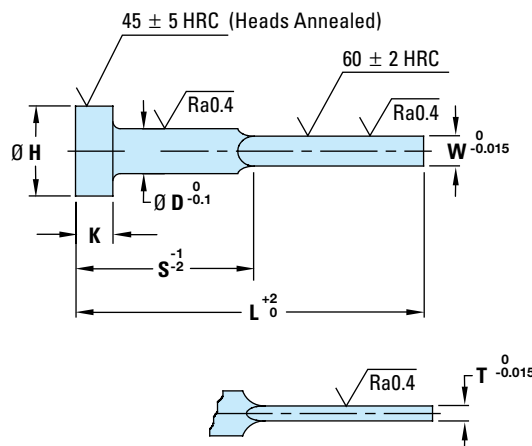
KEY TO CHART
 Items in stock
 2-3 week delivery
 Contact D-M-E for quote

DIN Ejector Blades – Hardened

DIN Ejector Blades – EJB-ELH

Expulsores planos | Extractores laminares | Ejecteurs lames | Auswerferklingen

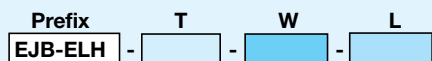
INFORMATION KEY:
D = Shoulder Diameter
H = Head Diameter
K = Head Thickness
L = Length
S = Shoulder Length
T = Blade Thickness
W = Blade Width
Standard: DIN/ISO Type
Material: 1.2210 (AISI L2 Type) Steel
Surface Treatment: None (Through-Hardened)
Max. Temp.: 250°C (482°F)
Dimensions: Shown in Millimeters (mm)



ITEM PREFIX	T	W	D	H	K	L										
						0060	0080	0100	0125	0160	0200	0250	0315	0400		
						S										
						30	40	50	63	80	100	125	160	200		
EJB-ELH (FK)*	01.0	03.5	4	8	3											
	01.0	03.8	4.2	8	3											
	01.0	04.5	5	10	3											
	01.0	05.5	6	12	5											
	01.2	03.8	4.2	8	3											
	01.2	04.5	5	10	3											
	01.2	05.5	6	12	5											
	01.2	07.5	8	14	5											
	01.5	04.5	5	10	3											
	01.5	05.5	6	12	5											
	01.5	07.5	8	14	5											
	01.5	09.5	10	16	5											
	02.0	05.5	6	12	5											
	02.0	07.5	8	14	5											
	02.0	09.5	10	16	5											
	02.0	11.5	12	18	7											
	02.0	15.5	16	22	7											
	02.5	11.5	12	18	7											
02.5	15.5	16	22	7												

* "(FK)" is only a cross-reference to current D-M-E Europe Catalog item prefix numbers.

HOW TO ORDER: Specify Item Number with prefix, T thickness, W width, and L length. Include zeros and dashes but omit decimals, as shown.



Example:
 Prefix T W L
 EJB-ELH-010-035-0060

Example:
 Prefix T W L
 EJB-ELH-020-115-0200

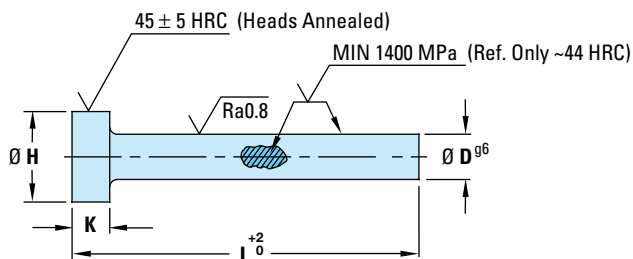
KEY TO CHART
 Items in stock
 2-3 week delivery
 Contact D-M-E for quote

DIN Core Pins – Hardened

DIN Core Pins – CRP-EHH

Pernos moldeadores | Pernos moldantes | Epingles au centre | Kernstifte

INFORMATION KEY:
D = Pin Body Diameter
H = Head Diameter
K = Head Thickness
L = Length
Standard: DIN/ISO Type
Material: 1.2344 (AISI H13 Type) Steel
Surface Treatment: None (Through-Hardened)
Max. Temp.: 500°-550°C (932°-1022°F)
Dimensions: Shown in Millimeters (mm)



ITEM PREFIX	D	H	K	L														
				0080	0100	0125	0160	0200	0250	0315	0400	0500	0630	0800	1000			
CRP-EHH (AHX)*	02.0	4	2		⚡				⚡									
	02.2	4	2															
	02.5	5	2															
	02.7	5	2															
	03.0	6	3		⚡				⚡									
	03.2	6	3															
	03.5	7	3															
	03.7	7	3															
	04.0	8	3		⚡				⚡		⚡							
	04.2	8	3															
	04.5	8	3															
	05.0	10	3		⚡				⚡			⚡						
	05.2	10	3															
	05.5	10	3															
	06.0	12	5		⚡				⚡			⚡						
	06.2	12	5															
	06.5	12	5															
	07.0	12	5															
	08.0	14	5		⚡				⚡			⚡						
	08.2	14	5															
	08.5	14	5															
	09.0	14	5															
	10.0	16	5						⚡			⚡						
	10.2	16	5															
	10.5	16	5															
	11.0	16	5															
	12.0	18	7						⚡			⚡						
	12.2	18	7															
	12.5	18	7															
	14.0	22	7															
	16.0	22	7									⚡		⚡				
	18.0	24	7															
20.0	26	8									⚡		⚡					
25.0	32	10									⚡		⚡					
32.0	40	10																

*“(AHX)” is only a cross-reference to current D-M-E Europe Catalog item prefix numbers.

HOW TO ORDER: Specify Item Number with prefix, D diameter, and L length. Include zeros and dashes but omit decimals, as shown.

Prefix D L
 CRP-EHH - [] - []

Example:
 Prefix D L
 CRP-EHH-020-0200

Example:
 Prefix D L
 CRP-EHH-250-0315

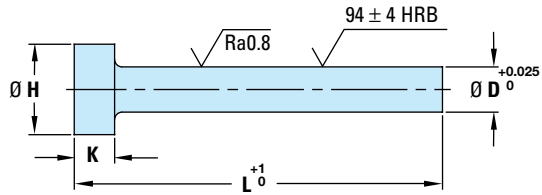
KEY TO CHART
 ⚡ Items in stock
 [] 2-3 week delivery
 [] Contact D-M-E for quote

DIN Core Pins – Performance

DIN Core Pins – CRP-ECS

Pernos moldeadores | Pernos moldantes | Epingles au centre | Kernstifte

INFORMATION KEY:
D = Pin Body Diameter
H = Head Diameter
K = Head Thickness
L = Length
Standard: DIN/ISO Type
Material: Beryllium-free Copper based alloy
Surface Treatment: None
Max. Temp.: 350°C (662°F)
Dimensions: Shown in Millimeters (mm)



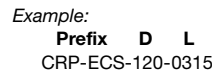
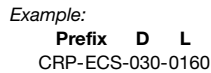
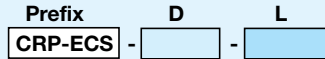
ITEM PREFIX	D	H	K	L			
				0100	0160	0250	0315
CRP-ECS (PCM)*	01.5	3	1.5				
	02.0	4	2				
	02.5	5	2				
	03.0	6	3				
	03.5	7	3				
	04.0	8	3		⚡		⚡
	04.5	8	3				
	05.0	10	3		⚡		⚡
	06.0	12	5		⚡		⚡
	07.0	12	5				
	08.0	14	5		⚡		⚡
	10.0	16	5		⚡		⚡
	12.0	18	7				⚡
	14.0	22	7				
16.0	22	7					

HIGH THERMAL CONDUCTIVITY PINS
Advantages:

- Reduced cycle time
- 5 times better conductivity than steel
- Improved part quality
- Lower machining costs
- Longer service life

* "(PCM)" is only a cross-reference to current D-M-E Europe Catalog item prefix numbers.

HOW TO ORDER: Specify Item Number with prefix, D diameter, and L length. Include zeros and dashes but omit decimals, as shown.



KEY TO CHART

- ⚡ Items in stock
- [] 2-3 week delivery
- [] Contact D-M-E for quote

DIN Pins and Sleeves for Special Applications

Complex part geometries, thin-wall molding, family molds, high-cavitation molds, increasingly large parts – every day, challenging new applications and materials are forcing moldmakers to develop creative new tooling solutions. D-M-E is here to help, with comprehensive capabilities for manufacturing special pins and sleeves – quickly and cost-effectively. We offer a wide range of custom features, including:

Manufacturing expertise

Extensive resources and efficient processes guarantee rapid order fulfillment and prompt delivery. Advanced manufacturing techniques and trained, dedicated personnel ensure quality.

Quality you can count on

D-M-E starts with only the best materials for its pins and sleeves. Our proprietary hot-forging technology and in-house nitriding guarantees the finest finished components. The industry's finest surface finish provides low-friction performance for long service life.

Need innovation? Choose D-M-E

For more than seven decades, moldmakers, molders and designers have trusted D-M-E for innovative, reliable solutions to their needs. Nobody beats D-M-E for quality products, quality service and quick delivery. D-M-E delivers your special pin and sleeve needs.

**Contact D-M-E for pads of faxable quote request forms.
(See next page)**



Special DIN Pins – Faxable Quote Form

QUOTE FAX HOTLINES or visit www.dme.net

United States: 888-808-4363 • Canada: 800-461-9965 • International: 248-398-7394

Special Pins

Quantity: _____

Type of Pin: _____
(specify item prefix)

Material:

- 1.2344 (AISI H13 Type) Steel
- 1.2210 (AISI L2 Type) Steel
- Other _____

Hardness:

- Standard (as specified by item prefix)
- Other _____ HRC
(specify)

Nitrided: Yes No

Heads are Annealed

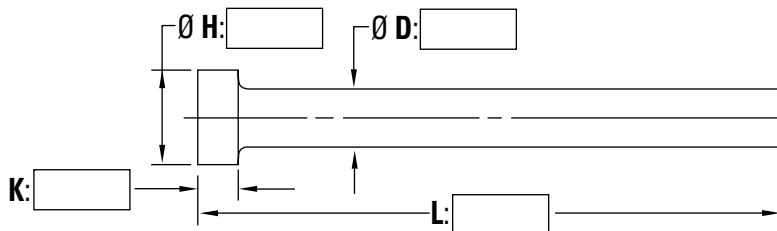
(unless otherwise specified) _____

Desired Delivery: _____

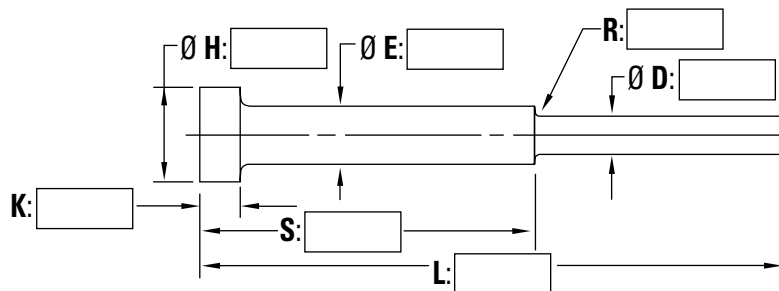
Tolerances:

- As indicated in item drawing
- Other (specify on drawing)

Straight Pin



Step Pin



Company name: _____	D-M-E account #: _____
Contact name: _____	P.O. #: _____
Phone: _____	FAX: _____
Address: _____	E-mail: _____
City: _____	State/Province: _____
ZIP/Postal Code: _____	Country: _____

Shipping method:

- UPS Ground
- UPS 2nd Day Air
- UPS Next Day
- FedEx
- Other _____

Special DIN Sleeves – Faxable Quote Form

QUOTE FAX HOTLINES or visit www.dme.net

United States: 888-808-4363 • Canada: 800-461-9965 • International: 248-398-7394

Special Sleeves

Quantity: _____

Hardness:

Heads are Annealed

Type of Sleeve: _____
(specify item prefix)

Standard (as specified by item prefix)

Desired Delivery: _____

Other _____ HRC
(specify)

Material:

Tolerances:

1.2344 (AISI H13 Type) Steel

Nitrided O.D.: Yes No

As indicated in item drawing

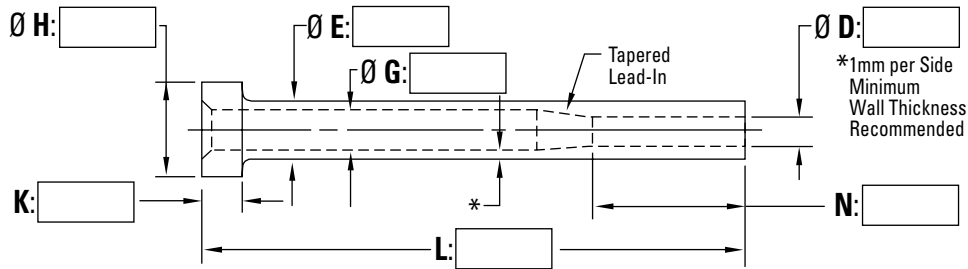
1.2210 (AISI L2 Type) Steel

Nitrided I.D.: Yes No

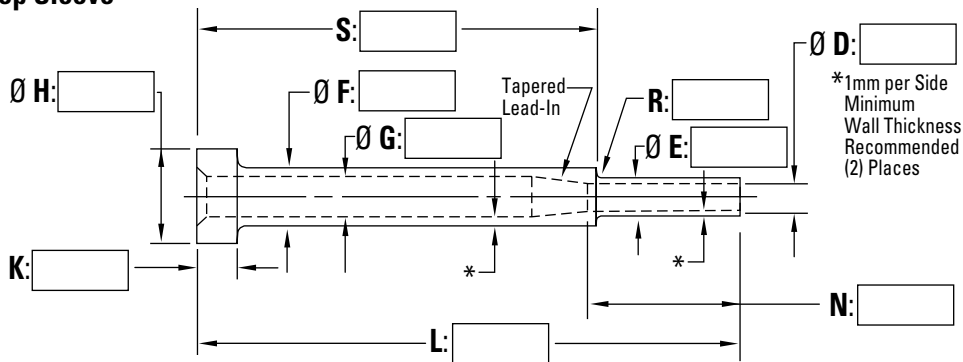
Other (specify on drawing)

Other _____

Sleeve



Step Sleeve



Company name: _____	D-M-E account #: _____
Contact name: _____	P.O. #: _____
Phone: _____	FAX: _____
Address: _____	E-mail: _____
City: _____	State/Province: _____
ZIP/Postal Code: _____	Country: _____

Shipping method:

- UPS Ground
- UPS 2nd Day Air
- UPS Next Day
- FedEx
- Other _____

D-M-E JIS Pins, Sleeves, Blades

A COMPREHENSIVE LINE
OF JIS EJECTOR PRODUCTS



JIS Pins, Sleeves, Blades

JIS EJECTOR PINS

STRAIGHT EJECTOR PINS..... 278

JIS EJECTOR SLEEVES

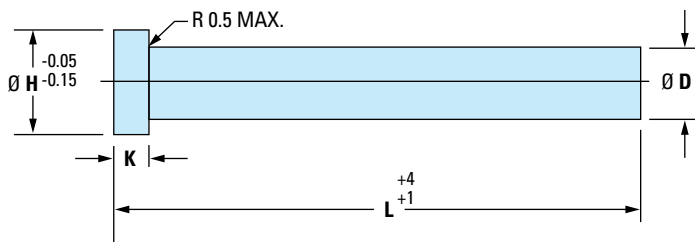
EJECTOR SLEEVES 279

JIS EJECTOR BLADES

EJECTOR BLADES 280

JIS Ejector Pins – Straight

JIS Ejector Pins – JFX



INFORMATION KEY:

D = Pin Body Diameter
H = Head Diameter
K = Head Thickness
L = Length
Standard: JIS
Material: SKD61 (H-13)
Surface Treatment: Nitrided
Surface Hardness: 70-72 Rc (HV 1000 ± 100)
Core Hardness: 40 HRC±2

Ø D PIN DIA	Ø H HEAD DIA	K HEAD THK	ITEM NUMBER (LENGTH L)											
			L=100	L=150	L=200	L=250	L=300	L=350	L=400	L=450	L=500	L=550	L=600	
1.0	5	4	JFX010100	JFX010150										
1.5	5	4	JFX015100	JFX015150	JFX015200									
2	5	4	JFX020100	JFX020150	JFX020200	JFX020250								
2.5	6	4	JFX025100	JFX025150	JFX025200	JFX025250	JFX025300	JFX025350	JFX025400	JFX025450	JFX025500	JFX025550	JFX025600	
3	6	4	JFX030100	JFX030150	JFX030200	JFX030250	JFX030300	JFX030350	JFX030400	JFX030450	JFX030500	JFX030550	JFX030600	
3.5	7	4	JFX035100	JFX035150	JFX035200	JFX035250	JFX035300	JFX035350	JFX035400	JFX035450	JFX035500	JFX035550	JFX035600	
4	8	6	JFX040100	JFX040150	JFX040200	JFX040250	JFX040300	JFX040350	JFX040400	JFX040450	JFX040500	JFX040550	JFX040600	
4.5	8	6	JFX045100	JFX045150	JFX045200	JFX045250	JFX045300	JFX045350	JFX045400	JFX045450	JFX045500	JFX045550	JFX045600	
5	9	6	JFX050100	JFX050150	JFX050200	JFX050250	JFX050300	JFX050350	JFX050400	JFX050450	JFX050500	JFX050550	JFX050600	
5.5	10	6	JFX055100	JFX055150	JFX055200	JFX055250	JFX055300	JFX055350	JFX055400	JFX055450	JFX055500	JFX055550	JFX055600	
6	10	6	JFX060100	JFX060150	JFX060200	JFX060250	JFX060300	JFX060350	JFX060400	JFX060450	JFX060500	JFX060550	JFX060600	
6.5	11	6	JFX065100	JFX065150	JFX065200	JFX065250	JFX065300	JFX065350	JFX065400	JFX065450	JFX065500	JFX065550	JFX065600	
7	11	6	JFX070100	JFX070150	JFX070200	JFX070250	JFX070300	JFX070350	JFX070400	JFX070450	JFX070500	JFX070550	JFX070600	
8	13	8	JFX080100	JFX080150	JFX080200	JFX080250	JFX080300	JFX080350	JFX080400	JFX080450	JFX080500	JFX080550	JFX080600	
9	15	8	JFX090100	JFX090150	JFX090200	JFX090250	JFX090300	JFX090350	JFX090400	JFX090450	JFX090500			
10	15	8	JFX100100	JFX100150	JFX100200	JFX100250	JFX100300	JFX100350	JFX100400	JFX100450	JFX100500	JFX100550	JFX100600	
12	17	8	JFX120100	JFX120150	JFX120200	JFX120250	JFX120300	JFX120350	JFX120400	JFX120450	JFX120500	JFX120550	JFX120600	
15	20	8	JFX150100	JFX150150	JFX150200	JFX150250	JFX150300	JFX150350	JFX150400	JFX150450	JFX150500	JFX150550	JFX150600	

Ø D PIN DIA	Ø H HEAD DIA	K HEAD THK	ITEM NUMBER (LENGTH L)							
			L=650	L=700	L=750	L=800	L=900	L=1000	L=1200	
2.5	6	4	JFX025650							
3	6	4	JFX030650	JFX030700						
3.5	7	4	JFX035650	JFX035700	JFX035750					
4	8	6	JFX040650	JFX040700	JFX040750					
4.5	8	6	JFX045650	JFX045700	JFX045750					
5	9	6	JFX050650	JFX050700	JFX050750					
6	10	6	JFX060650	JFX060700	JFX060750	JFX060800				
7	11	6	JFX070650	JFX070700	JFX070750	JFX070800				
8	13	8	JFX080650	JFX080700	JFX080750	JFX080800	JFX080900	JFX0801000	JFX0801200	
10	15	8	JFX100650	JFX100700	JFX100750	JFX100800	JFX100900	JFX1001000	JFX1001200	
12	17	8	JFX120650	JFX120700	JFX120750	JFX120800	JFX120900	JFX1201000	JFX1201200	
15	20	8	JFX150650	JFX150700	JFX150750	JFX150800	JFX150900	JFX1501000	JFX1501200	

JIS TOLERANCES		
PIN DIA Ø D	Ø D	TOL
	1.0	-0.005
	1.5	-0.012
HEAD THICK K	THI	TOL
	4	0 -0.020
	6 TO 8	0 -0.030

KEY TO CHART

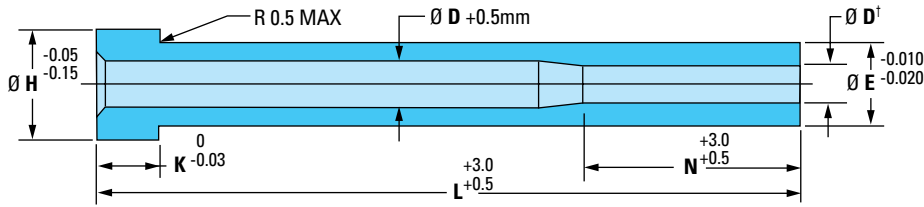
- Items in stock
- Contact D-M-E for quote

NOTE: All dimensions are in mm.

HOW TO ORDER: Use Item Number in charts above for ordering.

JIS Ejector Sleeves

JIS Ejector Sleeves – JFS



INFORMATION KEY:

- D** = Pin Inner Diameter
- E** = Pin Body Diameter
- H** = Head Diameter
- K** = Head Thickness
- L** = Length
- N** = ID Bearing Length
- Standard:** JIS
- Material:** SKD61 (H-13)
- Surface Treatment:** Nitrided
- Surface Hardness:** 70-72 Rc (HV 1000 ± 100)
- Core Hardness:** 32 HRC ± 2

Ø D [†] I.D.	Ø E O.D.	Ø H HEAD DIA	K HEAD THK	ITEM NUMBER (LENGTH L)												
				L=80	L=100	L=125	L=150	L=175	L=200	L=225	L=250	L=275	L=300	L=325	L=350	
				N=30	N=40	N=50		N=60		N=70		N=80				
1.5	4	8	6	JFS0101	JFS0201	JFS0301										
2.0	4	8	6	JFS0102	JFS0202	JFS0302	JFS0402									
	4.5	8	6		JFS0203	JFS0303	JFS0403									
	5	9	6		JFS0204	JFS0304	JFS0404	JFS0504	JFS0604							
	6	10	6		JFS0205	JFS0305	JFS0405	JFS0505	JFS0605							
2.5	5	9	6		JFS0206	JFS0306	JFS0406	JFS0506	JFS0606	JFS0706						
	6	10	6		JFS0207	JFS0307	JFS0407	JFS0507	JFS0607	JFS0707	JFS0807					
	6.5	11	6		JFS0208	JFS0308	JFS0408	JFS0508	JFS0608	JFS0708	JFS0808					
3.0	5	9	6		JFS0209	JFS0309	JFS0409	JFS0509	JFS0609							
	6	10	6		JFS0210	JFS0310	JFS0410	JFS0510	JFS0610	JFS0710	JFS0810	JFS0910	JFS1010			
	6.5	11	6		JFS0211	JFS0311	JFS0411	JFS0511	JFS0611	JFS0711	JFS0811	JFS0911	JFS1011			
	7	11	6		JFS0212	JFS0312	JFS0412	JFS0512	JFS0612	JFS0712	JFS0812	JFS0912	JFS1012			
3.5	6	10	6		JFS0213	JFS0313	JFS0413	JFS0513	JFS0613	JFS0713	JFS0813					
	6.5	11	6		JFS0214	JFS0314	JFS0414	JFS0514	JFS0614	JFS0714	JFS0814	JFS0914	JFS1014			
	7	11	6		JFS0215	JFS0315	JFS0415	JFS0515	JFS0615	JFS0715	JFS0815	JFS0915	JFS1015	JFS1115	JFS1215	
4.0	6	10	6		JFS0216	JFS0316	JFS0416	JFS0516	JFS0616							
	6.5	11	6		JFS0217	JFS0317	JFS0417	JFS0517	JFS0617	JFS0717	JFS0817					
	7	11	6		JFS0218	JFS0318	JFS0418	JFS0518	JFS0618	JFS0718	JFS0818	JFS0918	JFS1018	JFS1118	JFS1218	
4.5	8	13	8		JFS0219	JFS0319	JFS0419	JFS0519	JFS0619	JFS0719	JFS0819	JFS0919	JFS1019	JFS1119	JFS1219	
	7	11	6		JFS0220	JFS0320	JFS0420	JFS0520	JFS0620	JFS0720	JFS0820					
5.0	8	13	8		JFS0221	JFS0321	JFS0421	JFS0521	JFS0621	JFS0721	JFS0821	JFS0921	JFS1021	JFS1121	JFS1221	
	10	15	8		JFS0222	JFS0322	JFS0422	JFS0522	JFS0622	JFS0722	JFS0822	JFS0922	JFS1022	JFS1122	JFS1222	
5.5	10	15	8		JFS0223	JFS0323	JFS0423	JFS0523	JFS0623	JFS0723	JFS0823	JFS0923	JFS1023	JFS1123	JFS1223	
	8	13	8		JFS0224	JFS0324	JFS0424	JFS0524	JFS0624	JFS0724	JFS0824					
6.0	10	15	8		JFS0225	JFS0325	JFS0425	JFS0525	JFS0625	JFS0725	JFS0825	JFS0925	JFS1025	JFS1125	JFS1225	
	12	17	8		JFS0226	JFS0326	JFS0426	JFS0526	JFS0626	JFS0726	JFS0826	JFS0926	JFS1026	JFS1126	JFS1226	
6.5	10	15	8		JFS0227	JFS0327	JFS0427	JFS0527	JFS0627	JFS0727	JFS0827	JFS0927	JFS1027	JFS1127	JFS1227	
	12	17	8		JFS0228	JFS0328	JFS0428	JFS0528	JFS0628	JFS0728	JFS0828	JFS0928	JFS1028	JFS1128	JFS1228	
8.0	10	15	8		JFS0229	JFS0329	JFS0429	JFS0529	JFS0629	JFS0729	JFS0829	JFS0929	JFS1029	JFS1129	JFS1229	
	12	17	8		JFS0230	JFS0330	JFS0430	JFS0530	JFS0630	JFS0730	JFS0830	JFS0930	JFS1030	JFS1130	JFS1230	
8.5	12	17	8		JFS0231	JFS0331	JFS0431	JFS0531	JFS0631	JFS0731	JFS0831	JFS0931	JFS1031	JFS1131	JFS1231	

[†]JIS TOLERANCES

Ø D SLEEVE I.D.	Ø D I.D.	TOL	Ø E SLEEVE I.D.	Ø E I.D.	TOL		
	1.5 TO 3	+0.010 0				ALL SIZES	-0.010 -0.020
	3.5 TO 5	+0.012 0					
5.5 TO 8.5	+0.015 0						

KEY TO CHART

- Items in stock
- Contact D-M-E for quote

HOW TO ORDER: Use Item Number in charts above for ordering.

NOTE: All dimensions are in mm.