

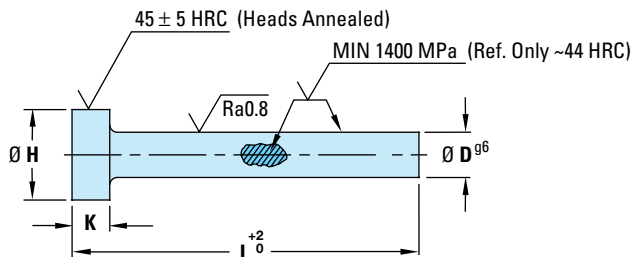
DIN Core Pins - Hardened

DIN Core Pins - CRP-EHH

Pernos moldeadores | Pernos moldantes | Epingles au centre | Kernstifte

INFORMATION KEY:

D = Pin Body Diameter
H = Head Diameter
K = Head Thickness
L = Length
Standard: DIN/ISO Type
Material: 1.2344 (AISI H13 Type) Steel
Surface Treatment: None (Through-Hardened)
Max. Temp.: 500°-550°C (932°-1022°F)
Dimensions: Shown in Millimeters (mm)



ITEM PREFIX	D	H	K	L												
				0080	0100	0125	0160	0200	0250	0315	0400	0500	0630	0800	1000	
CRP-EHH (AHX)*	02.0	4	2		⚡				⚡							
	02.2	4	2													
	02.5	5	2													
	02.7	5	2													
	03.0	6	3		⚡				⚡							
	03.2	6	3													
	03.5	7	3													
	03.7	7	3													
	04.0	8	3		⚡				⚡		⚡					
	04.2	8	3													
	04.5	8	3													
	05.0	10	3		⚡				⚡		⚡					
	05.2	10	3													
	05.5	10	3													
	06.0	12	5		⚡				⚡		⚡					
	06.2	12	5													
	06.5	12	5													
	07.0	12	5													
	08.0	14	5		⚡				⚡		⚡					
	08.2	14	5													
	08.5	14	5													
	09.0	14	5													
	10.0	16	5						⚡		⚡					
	10.2	16	5													
	10.5	16	5													
	11.0	16	5													
	12.0	18	7						⚡		⚡					
	12.2	18	7													
	12.5	18	7													
	14.0	22	7													
	16.0	22	7								⚡		⚡			
	18.0	24	7													
20.0	26	8								⚡		⚡				
25.0	32	10								⚡		⚡				
32.0	40	10														

* "(AHX)" is only a cross-reference to current D-M-E Europe Catalog item prefix numbers.

HOW TO ORDER: Specify Item Number with prefix, D diameter, and L length. Include zeros and dashes but omit decimals, as shown.

Prefix **CRP-EHH** - D - L

Example: Prefix D L
CRP-EHH-020-0200

Example: Prefix D L
CRP-EHH-250-0315

KEY TO CHART

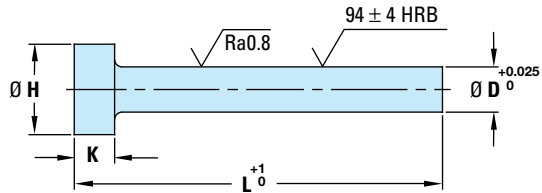
- Items in stock
- 2-3 week delivery
- Contact D-M-E for quote

DIN Core Pins – Performance

DIN Core Pins – CRP-ECS

Pernos moldeadores | Pernos moldantes | Epingles au centre | Kernstifte

INFORMATION KEY:
D = Pin Body Diameter
H = Head Diameter
K = Head Thickness
L = Length
Standard: DIN/ISO Type
Material: Beryllium-free Copper based alloy
Surface Treatment: None
Max. Temp.: 350°C (662°F)
Dimensions: Shown in Millimeters (mm)



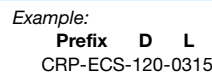
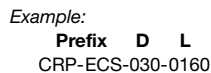
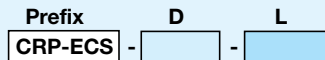
ITEM PREFIX	D	H	K	L			
				0100	0160	0250	0315
CRP-ECS (PCM)*	01.5	3	1.5				
	02.0	4	2				
	02.5	5	2				
	03.0	6	3				
	03.5	7	3				
	04.0	8	3		⚡		⚡
	04.5	8	3				
	05.0	10	3		⚡		⚡
	06.0	12	5		⚡		⚡
	07.0	12	5				
	08.0	14	5		⚡		⚡
	10.0	16	5		⚡		⚡
	12.0	18	7				⚡
	14.0	22	7				
16.0	22	7					

HIGH THERMAL CONDUCTIVITY PINS
Advantages:

- Reduced cycle time
- 5 times better conductivity than steel
- Improved part quality
- Lower machining costs
- Longer service life

*“(PCM)” is only a cross-reference to current D-M-E Europe Catalog item prefix numbers.

HOW TO ORDER: Specify Item Number with prefix, D diameter, and L length. Include zeros and dashes but omit decimals, as shown.



KEY TO CHART

- ⚡ Items in stock
- [] 2-3 week delivery
- [] Contact D-M-E for quote