

High-Temperature Insulator Sheets and Locating Rings

High-Temperature Insulator Sheets (HTIS) for Plastics Molds and Die-Cast Dies

- Asbestos-free material
- High compression strength
- Machinable with high-speed cutting tools

D-M-E High-Temperature Insulator Sheets are used on molds and dies between the top clamping plate and the stationary platen, and between the bottom of the ejector housing and the movable platen. The thermal insulating properties of this unique asbestos-free, glass-reinforced polymer composite inhibit heat transfer from the mold to the platen, or from the platen to the mold (depending on the application), which helps conserve energy and prolong machine life. These sheets have excellent non-deformation characteristics and a compressive strength,* which is higher than asbestos and mica materials. Compression molded for high impact strength, they are supplied micro-finished top and bottom, parallel within ±.002.

*49,400 psi at 75°F

ENERGY SAVINGS

1/4 THICK = 27,508 BTU/HR

1/2 THICK = 31,004 BTU/HR

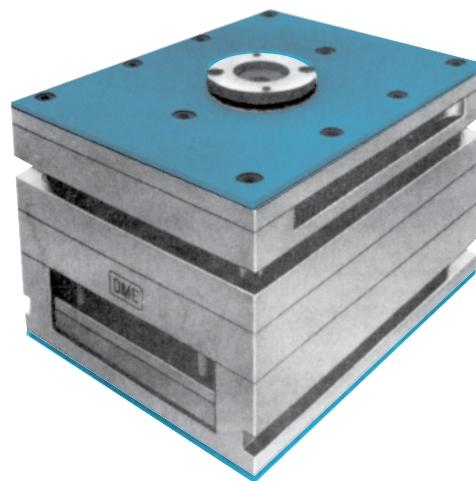
General Data

COMPRESSIVE STRENGTH	(ASTM D-229)	49,400 PSI at 75°F 27,200 PSI at 300°F 18,000 PSI at 400°F 17,100 PSI at 500°F 15,000 PSI at 550°F
MODULUS OF ELASTICITY IN COMPRESSION	(ASTM D-229)	1.8 x 10 ⁶ PSI at 75°F 2.9 x 10 ⁶ PSI at 425°F
WATER ABSORPTION	(ASTM D-229)	0.2%
THERMAL CONDUCTIVITY (K FACTOR), (BTU/HR/FT ² /IN/°F)	(ASTM C-177)	1.9 at 75°F 2.1 at 425°F
FLAME RESISTANCE	(UL SUBJECT 94)	94V-0
EXPANSION ACROSS THICKNESS EXPANSION ACROSS SURFACE		6.43 x 10 ⁻⁵ IN/IN/°F 1.24 x 10 ⁻⁵ IN/IN/°F
MAXIMUM RECOMMENDED SERVICE TEMPERATURE		550°F

High-Temperature Insulator Sheets – HTIS

THICKNESS ±.002	LENGTH ±.06	WIDTH ±.06	ITEM NUMBER	NET WEIGHT
1/4	36"	18"	HTIS-1836-2	12
		24"	HTIS-2436-2	16
		36"	HTIS-3636-2	24
1/4	96"	48"	HTIS-4896-2	105
1/2	36"	18"	HTIS-1836-4	24
		24"	HTIS-2436-4	32
		36"	HTIS-3636-4	48

NOTE: Special sizes available on special order: Max. length = 96", Max thickness = 1", Max. width = 48", Min. thickness = 1/8" Installation: Use 1/4"-20 flat head screws. Drill and tap base to suit.

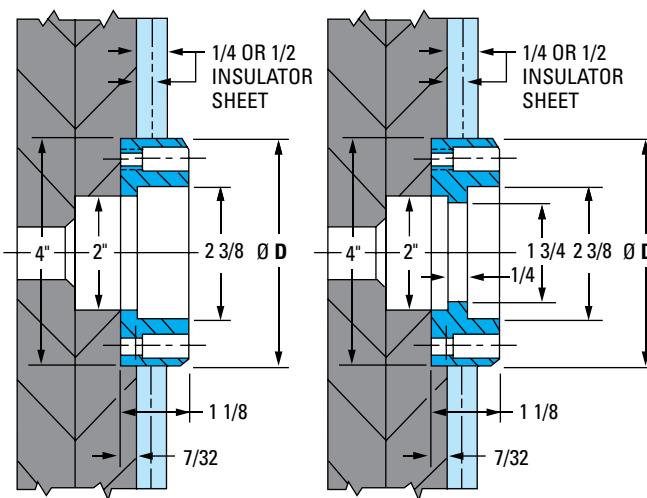


Locating Rings (6541, 6544) for use with Insulator Sheets

These thicker Locating Rings are used with Insulator Sheets 1/4 and 1/2 thick. They extend beyond the Insulator Sheet far enough to ensure more than 5/16" pilot engagement with the locating hole in the machine platen.

ITEM NUMBER	+0.003 Ø D -0.000	DESCRIPTION
6541	3.990	STANDARD SERIES
6544	3.990	CLAMP TYPE

NOTE: Includes two 5/16"-18 socket head cap screws.



ITEM NO. 6541
Ø D = 3.990
(STANDARD SERIES)

ITEM NO. 6544
Ø D = 3.990
(CLAMP TYPE)