

# Guided Ejection Guide Pins

## Guided Ejection Guide Pins – GL

- Short press fit lengths for use in guided ejection applications
- Pins are hardened and precision ground

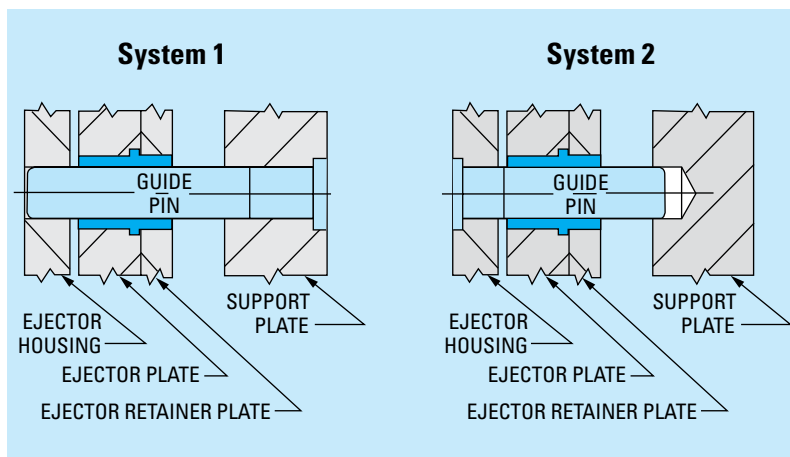
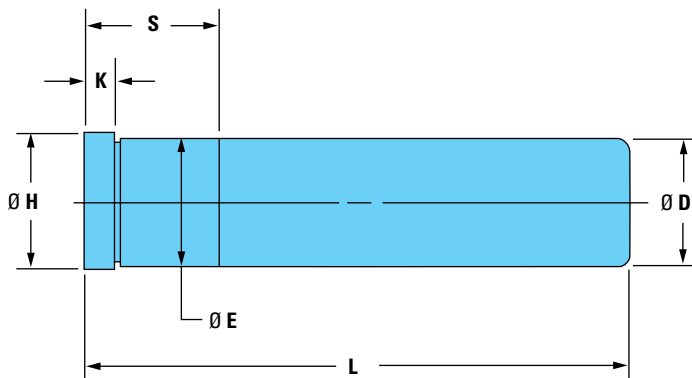


When pins are installed in the support plate, ejector housing can be removed from mold without removing ejector plates, permitting easy access to service the ejector system.

Pins installed in the ejector housing permit fast, low-cost installation. When ejector housing is removed from mold base, the complete ejector assembly is removed.

It is recommended that a minimum of four pins and bushings be installed. Size of the pins and bushings should be determined by the size of the mold. The Guided Ejection System is an inexpensive method to protect against wear and costly damage to a mold in production.

Properly installed, the D-M-E Guided Ejection System holds the ejector assembly in alignment and supports the weight of the ejector assembly throughout the entire machine cycle. This greatly reduces wear on ejection components and prevents possible cocking of the ejector plates.



### General Dimensions

NOMINAL DIA	Ø D <sup>+0.000</sup> / <sub>-0.005</sub>	Ø H (MAX)	K	Ø E <sup>+0.005</sup> / <sub>-0.000</sub>
3/4	.749	.990	3/16	.751
7/8	.874	1.115	1/4	.876
1"	.999	1.240	1/4	1.001
1 1/4	1.249	1.490	5/16	1.251
1 1/2	1.499	1.740	5/16	1.501

L LENGTH <sup>+0.00</sup> / <sub>-0.06</sub>	Ø D = 3/4 I.D.		Ø D = 7/8 I.D.		Ø D = 1" I.D.		Ø D = 1 1/4 I.D.		Ø D = 1 1/2 I.D.	
	S	ITEM NUMBER	S	ITEM NUMBER	S	ITEM NUMBER	S	ITEM NUMBER	S	ITEM NUMBER
3 3/4	7/8	5004-GL	7/8	5103-GL	7/8	5202-GL	7/8	5302-GL	1 3/8	5402-GL
4 1/4	7/8	PF-5005-GL	7/8	PF-5104-GL	7/8	PF-5203-GL	7/8	5303-GL	1 3/8	5403-GL
4 3/4	7/8	PF-5006-GL	7/8	PF-5105-GL	7/8	PF-5204-GL	1 3/8	5304-GL	1 3/8	5404-GL
5 1/4	7/8	PF-5007-GL	7/8	PF-5106-GL	7/8	PF-5205-GL	1 3/8	5305-GL	1 3/8	5405-GL
5 3/4	7/8	PF-5008-GL	7/8	PF-5107-GL	7/8	PF-5206-GL	1 3/8	5306-GL	1 3/8	5406-GL
6 1/4	—	—	—	—	—	—	1 3/8	5307-GL	1 3/8	5407-GL

**NOTES:** 1. Select corresponding bronze-plated guided ejection bushings or self-lubricating guided ejection bushings in proper diameter for the application.

2. D-M-E Guided Ejection Systems are available installed in standard mold bases. For additional information and prices, contact D-M-E.

All items in stock.

**QUANTITY DISCOUNTS:** Guide Pins. Discounts apply to current Net Prices. Any combination of pins and bushings may be mixed for quantity discounts. 16 to 27 Less 10%; 28 or more Less 15%

# Guided Ejection Bushings

- Holds the ejector assembly in alignment
- Supports the weight of the ejector assembly throughout the entire cycle
- Reduces wear on ejection components
- Prevents cocking of the ejector plates



## Bronze-Plated Guided Ejection Bushings – GEB

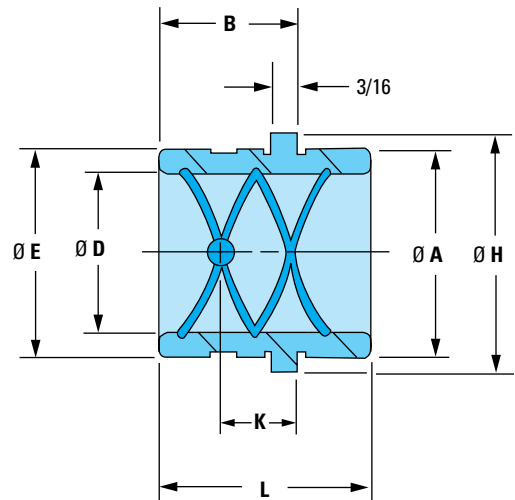
The Bronze-Plated Guided Ejection Bushings feature the strength of steel plus the nonscoring lubricity of bronze plating. Internal oil grooves and a lubrication hole help to ensure smoother mold operation.

It is recommended that a minimum of four bushings be installed. The size of the bushings should be determined by the size of the mold. The Guided Ejection System is inexpensive protection against wear and possible costly damage to a mold in production.

*D-M-E Guided Ejection Systems are available installed in standard mold bases. For additional information and prices, contact D-M-E.*

NOMINAL I.D.	Ø D +0.005 -0.000	Ø E +0.005 -0.000	Ø A +0.000 -0.001	Ø H +0.000 -0.010	L +0.00 -0.03	B	K	ITEM NUMBER
3/4	.751	1.1255	1.1240	1.302	1.50	1.00	.56	GEB-750
7/8	.876	1.2505	1.2490	1.427	1.50	1.00	.56	GEB-875
1"	1.001	1.3755	1.3740	1.552	1.75	1.12	.62	GEB-100
1 1/4	1.251	1.6255	1.6240	1.802	1.75	1.12	.62	GEB-125
1 1/2	1.501	2.0005	1.9990	2.177	1.75	1.12	.62	GEB-150

**NOTE:** Select corresponding guide pin in proper diameter and length for application.



## Self-Lubricating Guided Ejection Bushings – GBE

It is recommended that a minimum of four bushings be installed. Bushing size should be determined by the size of the mold. The Guided Ejection System is inexpensive protection against wear and possible costly damage to a mold in production.

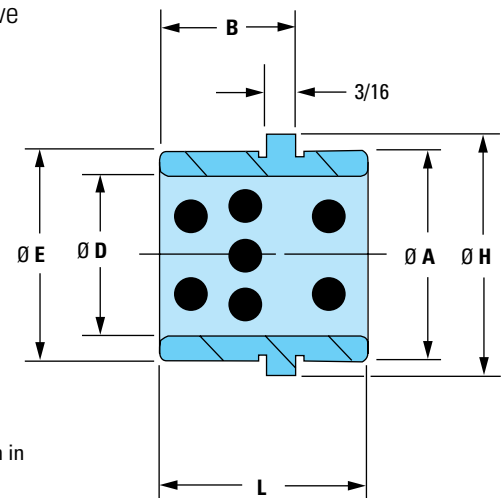
NOMINAL I.D.	Ø D +0.005 -0.000	Ø E +0.005 -0.000	Ø A +0.000 -0.001	Ø H +0.000 -0.030	L +0.00 -0.06	B	ITEM NUMBER
3/4	.751	1.1255	1.1240	1.302	1.50	1.00	GBE-0750
7/8	.876	1.2505	1.2490	1.427	1.50	1.00	GBE-0875
1"	1.001	1.3755	1.3740	1.552	1.75	1.12	GBE-1000
1 1/4	1.251	1.6255	1.6240	1.802	1.75	1.12	GBE-1250
1 1/2	1.501	2.0005	1.9990	2.177	1.75	1.12	GBE-1500
2"	2.001	2.5005	2.4990	2.687	2.25	1.62	GBE-2000

All items in stock.

**QUANTITY DISCOUNTS:** Guided Ejection Bushings. Discounts apply to current Net Prices. Any combination of pins and bushings may be mixed for quantity discounts.  
16 to 27 Less 10%; 28 or more Less 15%

**NOTES:**

1. Select corresponding guide pin in proper diameter and length for application.
2. These bushings are interchangeable with comparably sized D-M-E bronze-plated guided ejection bushings. 2" I.D. size (GBE-2000) is available only in self-lubricating style.



# Guided Ejection Systems



Guided Ejection Systems hold the ejector assembly in alignment and support the weight of the ejector assembly throughout the molding cycle – greatly reducing wear on ejection components and preventing cocking of the ejector assembly.

**FOR QUOTING OR ORDERING, SPECIFY:**

**Guided Ejection System Type**

- System 1
- System 2

Quantity (2 or 4): \_\_\_\_\_

**Guided Ejection Bushing Type**

- Bronze-Plated Steel Bushings
- Self-Lubricating Bushings

**Guided Ejection**

**Position:**

- STD  Specify

Recommended position from table provided standard (see opposite page). If a different position is required, specify below.

GEx \_\_\_\_\_

GEy \_\_\_\_\_

**Diameter:**

- STD  Specify

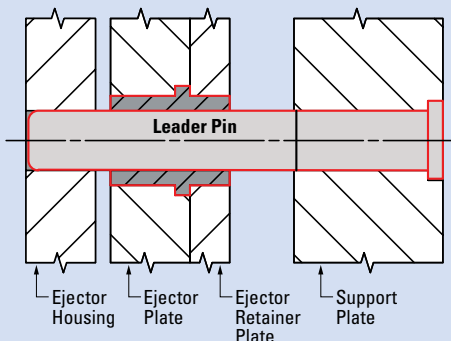
Recommended diameter from table provided standard. If a different diameter is required, it will require a positioning change; specify below.

Available diameters:

- 0.750
- 0.875
- 1.000
- 1.250

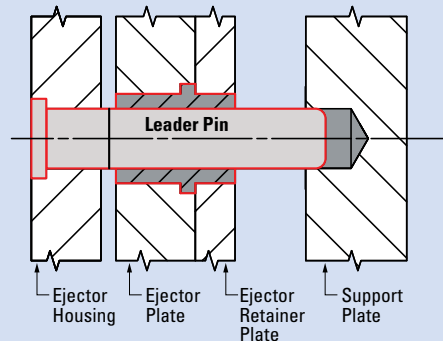
**SYSTEM 1**

When pins are installed in the support plate, the ejector housing can be removed from the mold without removing ejector plates. This permits easy access to service the ejector system.

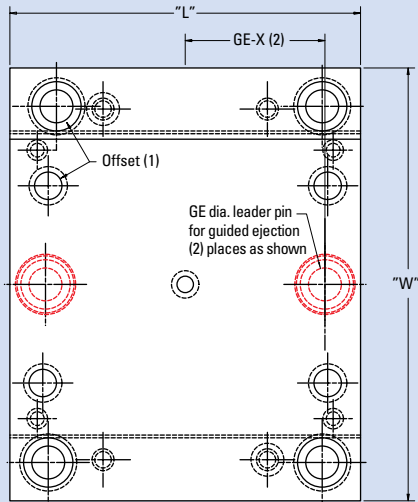


**SYSTEM 2**

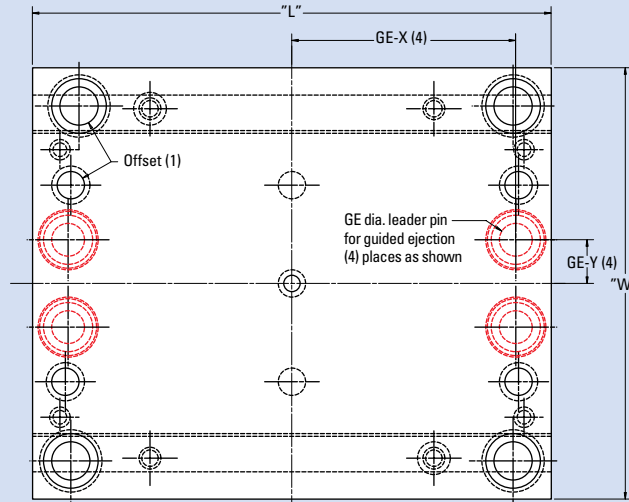
Pins installed in the ejector housing permit fast installation. When the ejector housing is removed from the mold base, the complete ejector assembly is removed.



# Guided Ejection Systems



**"B" HALF OF MOLD  
FOR 88, 812 & 108 MOLD BASE  
SIZE ONLY**



**"B" HALF OF MOLD  
FOR 1012 – 2435 BASES**

## Guided Ejection Positions

PIN DIAMETER (RECOMMENDED)	BASE SIZE	GE <sub>x</sub>	GE <sub>y</sub>
0.750	88	3.000	Center
	812	5.000	Center
	108	3.062	Center
	1012	5.000	1.000
	1016	7.062	1.000
	1020	9.062	1.000
	1112	5.062	1.625
	1114	6.062	1.625
	1118	8.062	1.625
	1123	10.812	1.625
0.875	212	5.000	1.750
	1215	6.500	1.750
	1220	9.000	1.750
	1223	10.750	1.750
	1315	6.500	2.375
	1318	8.000	2.375
	1321	9.375	2.375
	1323	10.750	2.375
	1326	12.000	2.375
	1329	13.750	2.375

PIN DIAMETER (RECOMMENDED)	BASE SIZE	GE <sub>x</sub>	GE <sub>y</sub>
1.000	1518	7.875	2.375
	1524	10.812	2.375
	1529	13.688	2.375
	1616	6.938	2.875
	1620	8.938	2.875
	1623	10.688	2.875
	1626	11.938	2.875
	1629	13.688	2.875
	1635	16.688	2.875
	1724	10.812	3.125
	1729	13.688	3.125
	1818	7.938	3.875
	1820	8.938	3.875
	1823	10.688	3.875
	1826	11.038	3.875
	1829	13.688	3.875
	1835	16.688	3.875
	1.250	1924	10.812
1929		13.688	4.625
1935		16.688	4.625
2424		10.688	6.125
2429		13.562	6.125
2435		16.562	6.125