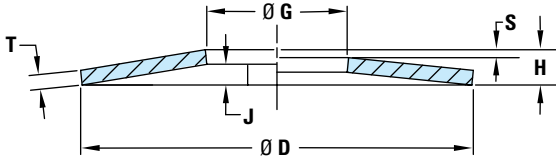


# Belleville Washers (Disc Springs) – Metric

## Belleville Washers (Disc Springs) – WZ8050

Rondanas Belleville | Rondelles Belleville

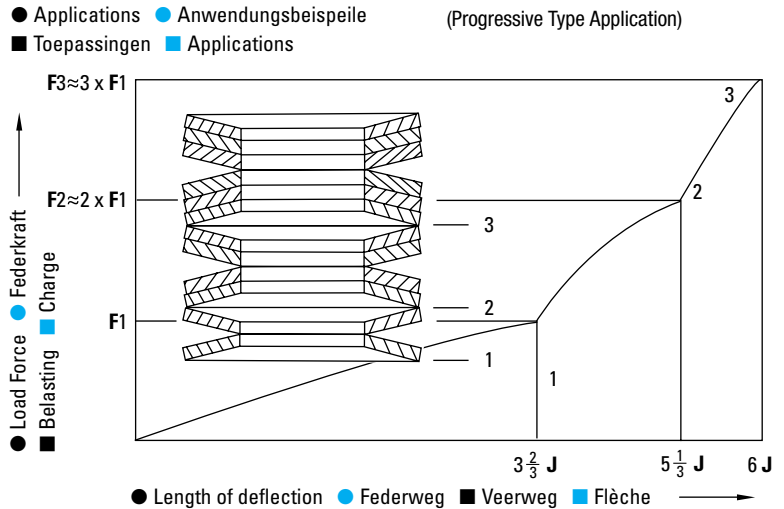
Anilhas Belleville | Tellerfedern



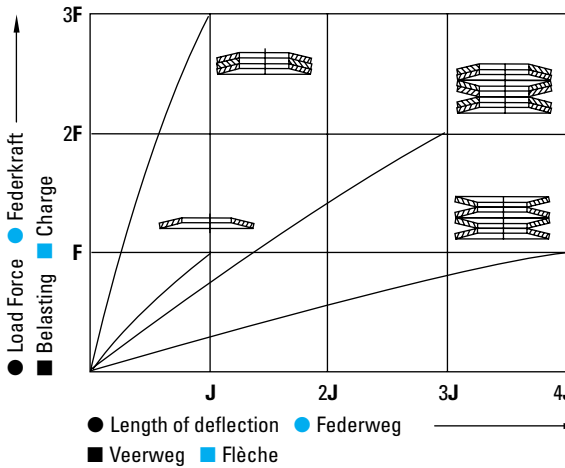
**INFORMATION KEY:**

**D** = Outside Diameter  
**F** = Load Force in Newtons (at specified "S" Deflections)  
**G** = Inside Diameter  
**H** = Overall Height (of one unloaded washer)  
**J** = Maximum Theoretical Deflection to flat  
**S** = Deflection (shown for % of Maximum Theoretical Deflection J)  
**T** = Thickness  
**Standard:** DIN 2093  
**Material:** DIN 50 CrV 4 (AISI 6150 Type) Steel  
**Max. Temp.:** 300°C (572°F)  
**Dimensions:** Shown in Millimeters (mm)

### Spring Load versus Deflection Data



● Applications ● Anwendungsbeispiele  
 ■ Toepassingen ■ Applications



● Length of deflection ● Federweg  
 ■ Veerweg ■ Flèche

ITEM NUMBER	Ø D	Ø G	T	H	J	S = 0.25 X J		S = 0.5 X J		S = 0.75 X J		AVAIL
						S	F	S	F	S	F	
WZ8050 160 082 090	16.0	08.2	0.90	1.25	0.35	0.087	363	0.175	697	0.262	1013	⚡
WZ8050 180 092 100	18.0	09.2	1.00	1.40	0.4	0.1	451	0.2	865	0.3	1254	⚡
WZ8050 200 102 110	20.0	10.2	1.10	1.55	0.45	0.112	548	0.225	1050	0.337	1521	⚡
WZ8050 250 122 090	25.0	12.2	0.90	1.60	0.7	0.175	367	0.35	644	0.525	862	⚡
WZ8050 315 163 125	31.5	16.3	1.25	2.15	0.9	0.225	791	0.45	1409	0.675	1913	⚡
WZ8050 400 204 225	40.0	20.4	2.25	3.15	0.9	0.225	2336	0.45	4481	0.675	6500	⚡
WZ8050 500 254 250	50.0	25.4	2.50	3.90	1.4	0.35	3473	0.7	6437	1.05	9063	⚡
WZ8050 500 254 300	50.0	25.4	3.00	4.10	1.1	0.275	4255	0.55	8214	0.825	11,976	⚡

**HOW TO ORDER:** Specify Item Number. Omit spaces (spaces are only shown here for easier reading).

**KEY TO CHART**

- Items in stock
- 2-3 week delivery
- Contact D-M-E for quote

Mold Assembly | Belleville Washers (Disc Springs) – Metric