

DME Meteor® Hot Runner Systems

CUSTOM-CONFIGURED,
ECONOMICAL SOLUTIONS
FOR QUICK DELIVERY

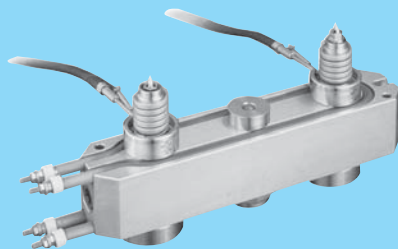


More Solutions. More Choices. Always Quick Delivery.



Meteor 1 hot runner systems available for same-day shipment.

Stocked for quick delivery, Meteor manifolds are supplied with replaceable, press-fit tubular heaters.



Meteor 2 manifold and components systems ship in one week or less.

The Meteor® Manifold System provides a versatile yet economical solution for many hot runner mold designs. Two-drop (in-line) and four-drop (X-style) manifolds are available in sizes to suit a variety of applications. Pre-engineered with accurately machined flow channels, nozzle ports can be freely located anywhere within each manifold's flow channel limits. Stocked for quick delivery, Meteor manifolds are supplied with replaceable, press-fit tubular heaters. A full complement of ancillary components are also available to complete the system design and construction. Nozzle selection can be made from a broad array of DME nozzles, including the 250 and 375 Series, the popular Mini Gate-Mate® and the Gate-Mate® 4 Series.

Advantages

- Two levels of quick-delivery hot runner systems
- In-line and X-style manifolds for 2- and 4-drop applications
- Suitable for engineered and commodity resins
- Cost-effective
- Satisfaction 100% guaranteed

Choose the Meteor System that's right for you

DME offers two quick-delivery hot runner systems with varying levels of customization – you pick the one that fits your needs.

Meteor 1

- Standard, off-the-shelf manifolds with machined horizontal flow channel
- Customer machines vertical flow channel locations and end plugs for maximum configuration flexibility
- Customer can easily order a Meteor 1 manifold kit and select nozzles, supports, nozzle seat, locating ring, thermocouples and other necessary items – for same-day shipment

Meteor 2

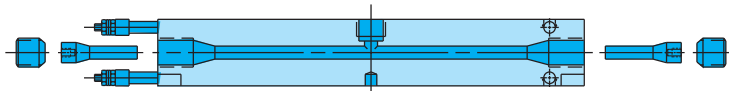
- Manifold and components system, integrated with a Meteor 1 manifold kit
- Customer specifies nozzles, supports, nozzle seat, locating ring, thermocouples, etc.
- DME performs vertical flow channel and end plug machining
- Shipment in just one week (or less)

More Solutions. More Choices. Always Quick Delivery.

The Meteor Package

Each Meteor manifold kit includes the following standard items:

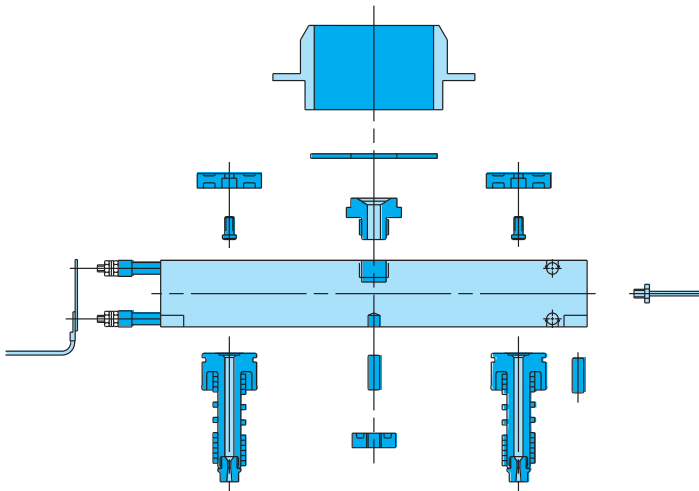
- Manifold with pre-machined horizontal flow channel
- Pre-installed, replaceable tubular heaters
- End plugs
- End plug set screws



Ancillary Components

A variety of ancillary components available include:

- Locating rings
- Drool rings
- Nozzle seats
- Riser pads and cap screws
- Center support pads and dowel pins
- Thermocouples



Nozzle Options

All nozzles have a selection of tip styles to suit material flow and gate cosmetic requirements.

METEOR SYSTEM	EHA AND CIA		MINI GATE-MATE	GATE-MATE 4 SERIES
	250 SERIES	375 SERIES		
METEOR 1	✓	✓	✓	✓
METEOR 2	✓	✓	✓	✓

Application Notes

- Mini Gate-Mate, Gate-Mate 4 and 250 Series nozzles to be used with manifold kits MEM0100K thru MEM0200K, MCM0100K thru MCM0200K and MXM0100K thru MXM0200K. Gate-Mate 4 and 375 Series nozzles to be used with all other manifold kits.
- All manifolds with suffix of 100K, 150K and 200K have a 9mm diameter flow channel; all other manifolds have a 12mm diameter flow channel.
- CIA High Performance nozzles are recommended for materials that process above 260°C/500°F.
- For filled or abrasive materials, wear-resistant tips are recommended.
- Meteor manifolds are not recommended for use with PVC material.

Contact DME for assistance.

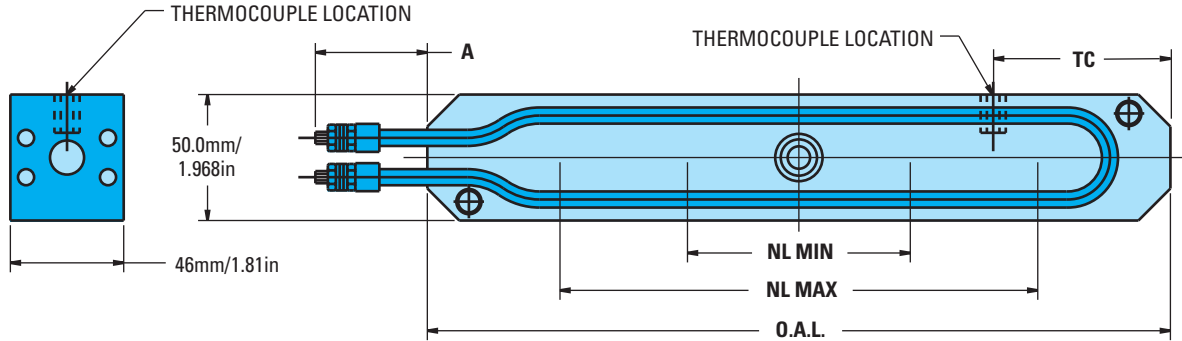


Meteor® Hot Runner Systems | More Solutions. More Choices. Always Quick Delivery.

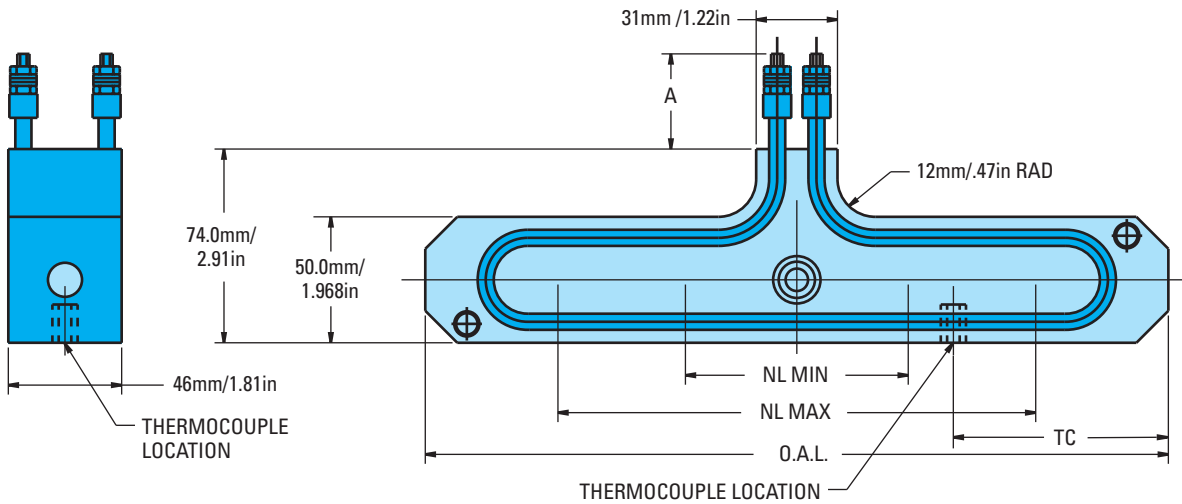
Meteor 1 In-Line and X-Style Manifolds

Meteor 1: Same-day shipment!

Meteor 1 In-Line End Exit



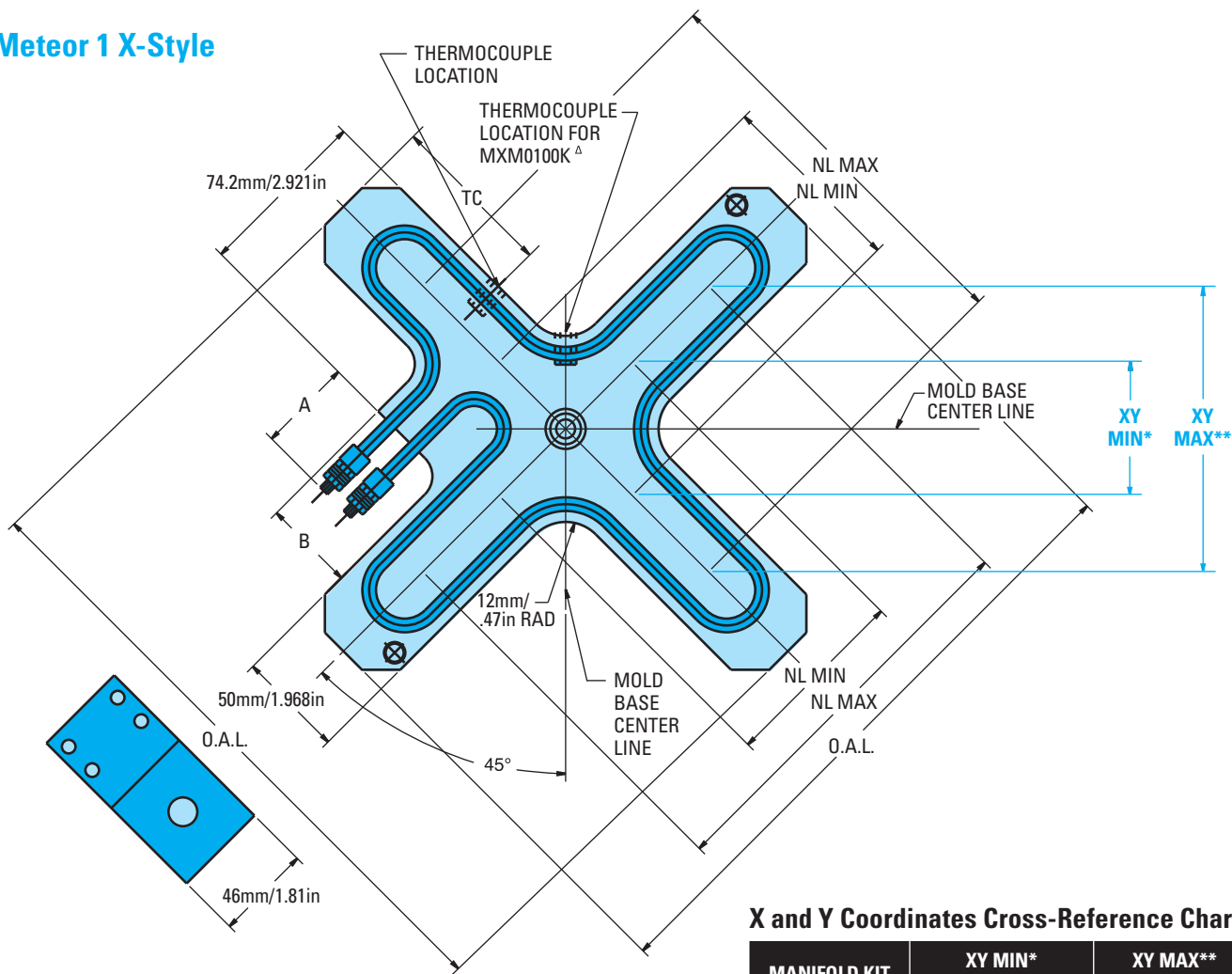
Meteor 1 In-Line Center Exit



MANIFOLD TYPE	MANIFOLD KIT ITEM NO.	NL MIN.		NL MAX.		O.A.L.		A		B		TC	
		MM	INCH	MM	INCH	MM	INCH	MM	INCH	MM	INCH	MM	INCH
IN-LINE END EXIT	MEM0100K	55	2.165	100	3.937	195	7.677	44.5	1.75	—	—	60	2.362
	MEM0150K	100	3.937	150	5.906	245	9.646	44.5	1.75	—	—		
	MEM0200K	150	5.906	200	7.874	295	11.614	44.5	1.75	—	—		
	MEM0300K	200	7.874	300	11.811	395	15.551	44.5	1.75	—	—	72.5	2.362
	MEM0400K	300	11.811	400	15.748	495	19.488	50.8	2.00	—	—		
MEM0500K	400	15.748	500	19.685	595	23.425	50.8	2.00	—	—			
IN-LINE CENTER EXIT	MCM0100K	55	2.165	100	3.937	195	7.677	44.5	1.75	—	—	60	2.362
	MCM0150K	100	3.937	150	5.906	245	9.646	44.5	1.75	—	—		
	MCM0200K	150	5.906	200	7.874	295	11.614	44.5	1.75	—	—		
	MCM0300K	200	7.874	300	11.811	395	15.551	44.5	1.75	—	—	72.5	2.854
	MCM0400K	300	11.811	400	15.748	495	19.488	50.8	2.00	—	—		
MCM0500K	400	15.748	500	19.685	595	23.425	50.8	2.00	—	—			
X-STYLE	MXM0100K	55	2.165	100	3.937	195	7.677	44.5	1.75	56.8	2.236	SEE X-STYLE ^A	
	MXM0150K	100	3.937	150	5.906	245	9.646	44.5	1.75	51.3	2.020	60	2.362
	MXM0200K	150	5.906	200	7.874	295	11.614	50.8	2.00	51.3	2.020		
	MXCM0300K	200	7.874	300	11.811	395	15.551	50.8	2.00	51.3	2.020	72.5	2.854

Meteor 1 In-Line and X-Style Manifolds

Meteor 1 X-Style



X and Y Coordinates Cross-Reference Chart

MANIFOLD KIT ITEM NO.	XY MIN*		XY MAX**	
	MM	INCH	MM	INCH
MXM0100K	38.90	1.531	70.71	2.783
MXM0150K	70.71	2.783	106.07	4.176
MXM0200K	106.07	4.176	141.42	5.568
MXM0300K	141.42	5.568	212.13	8.352

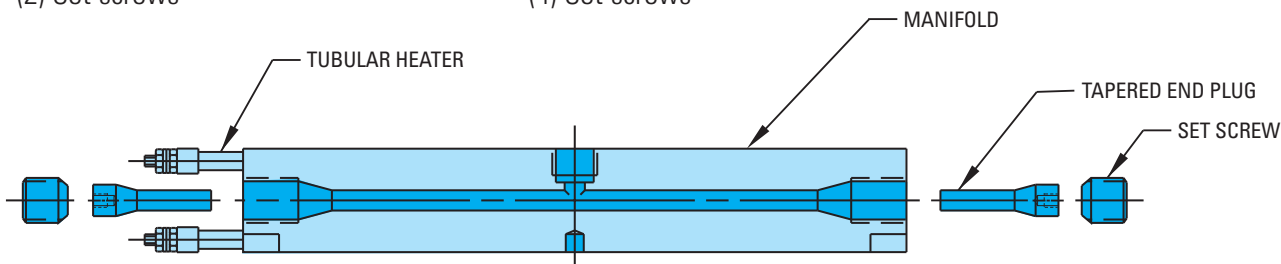
Meteor 1 Manifold Kit Includes:

In-Line System:

- (1) Manifold (center or end heater exit)
- (2) Tubular heaters (installed)
- (2) Tapered end plugs
- (2) Set screws

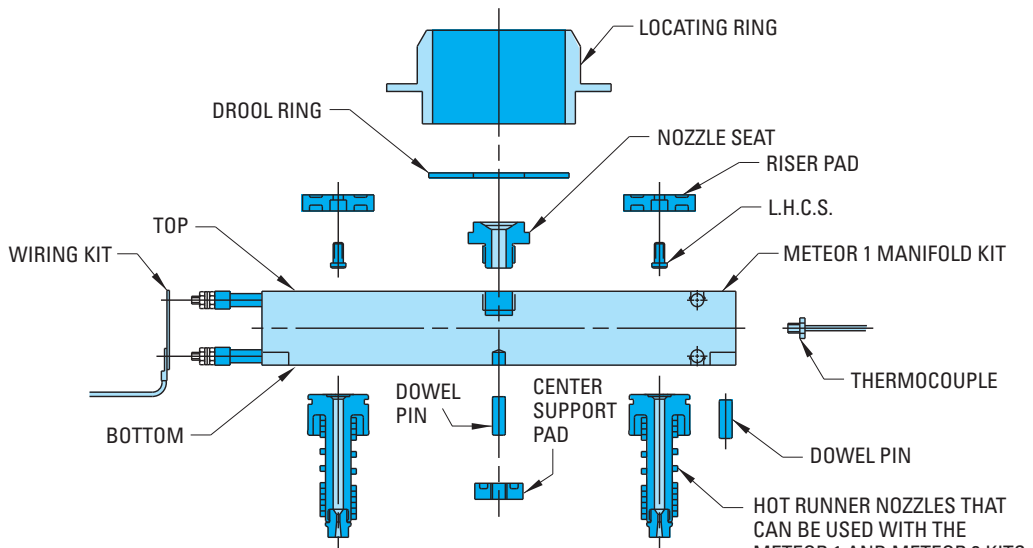
X-Style System:

- (1) Manifold
- (2) Tubular heaters (installed)
- (4) Tapered end plugs
- (4) Set screws



Meteor 1 & 2 Ancillary Component Options

Meteor 2: One-week delivery!



- HOT RUNNER NOZZLES THAT CAN BE USED WITH THE METEOR 1 AND METEOR 2 KITS:
- 250 SERIES EHA AND CIA
 - 375 SERIES EHA AND CIA
 - MINI GATE-MATE
 - GATE-MATE 4 SERIES

MANIFOLD TYPE	METEOR 1 MANIFOLD KIT ITEM NO.	METEOR 2 MANIFOLD KIT PLUS ITEM NO.	DESIGN CRITERIA	
			NOZZLE OPTIONS	V VERTICAL FLOW CHANNEL DIA. MM INCH
IN-LINE END EXIT	MEM0100K	MEM0100KP	250 SERIES EHA & CIA MINI GATE-MATE GATE-MATE 4 SERIES	9 .354
	MEM0150K	MEM0150KP		
	MEM0200K	MEM0200KP		
	MEM0300K	MEM0300KP	375 SERIES EHA & CIA GATE-MATE 4 SERIES	12 .472
	MEM0400K	MEM0400KP		
IN-LINE CENTER EXIT	MCM0100K	MCM0100KP	250 SERIES EHA & CIA MINI GATE-MATE GATE-MATE 4 SERIES	9 .354
	MCM0150K	MCM0150KP		
	MCM0200K	MCM0200KP		
	MCM0300K	MCM0300KP	375 SERIES EHA & CIA GATE-MATE 4 SERIES	12 .472
	MCM0400K	MCM0400KP		
X-STYLE	MXM0100K	MXM0100KP	250 SERIES EHA & CIA MINI GATE-MATE GATE-MATE 4 SERIES	9 .354
	MXM0150K	MXM0150KP		
	MXM0200K	MXM0200KP		
	MXM0300K	MXM0300KP	375 SERIES EHA & CIA GATE-MATE 4 SERIES	12 .472

Meteor 1 Manifold Kit includes manifold, tubular heaters installed, two end plugs, and two set screws. The customer machines the vertical flow channel locations and end plugs for maximum configuration flexibility.

Meteor 2 Manifold Kit Plus includes the machining of the vertical flow channels and the installation of the end plugs and set screws by DME. The customer provides DME with the gate locations on a Meteor 2 Criteria Form.

CUSTOMER DESIGN CRITERIA FORMS

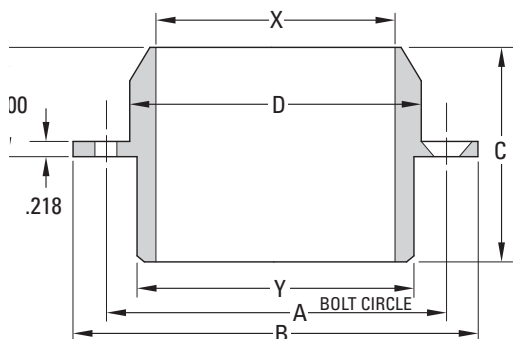
CDC

To provide your Meteor® application specifications, visit www.dme.net/cdc

MANIFOLD TYPE	METEOR 1 MANIFOLD KIT ITEM NO.	METEOR 2 MANIFOLD KIT PLUS ITEM NO.	ANCILLARY COMPONENT OPTIONS									
			THERMOCOUPLE ITEM NO.	LOCATING RING ITEM NO.	DROOL RING ITEM NO.	NOZZLE SEAT ITEM NO.	RISER PADS ITEM NO.	CTR. SUPPORT PADS ITEM NO.	DOWEL PINS ITEM NO.	1/4-20 X .50 LG. L.H.C.S. ITEM NO.	WIRING KIT ITEM NO.	
IN-LINE END EXIT	MEM0100K	MEM0100KP	ETC0252	EHL0253 EHL0255 (1 REQ'D.)	EHL1003	MNS0009	ERP1001	ERP1011 ERP1012 (2 OF SAME REQ'D.)	ECB0468 ECB0469 ECB0503 (1 REQ'D.)	DP820 DP828 DP832 (2 OF SAME REQ'D.)	1412LH (2 REQ'D.)	MWK1001
	MEM0150K	MEM0150KP					ERP1002					
	MEM0200K	MEM0200KP					ERP1011					
	MEM0300K	MEM0300KP					ERP1012					
	MEM0400K	MEM0400KP										
	MEM0500K	MEM0500KP	ETC0252 (2 REQ'D.)			MNS0012						MWK1002
IN-LINE CENTER EXIT	MCM0100K	MCM0100KP	ETC0252	EHL0253 EHL0255 (1 REQ'D.)	EHL1003	MNS0009	ERP1001	ERP1011 ERP1012 (2 OF SAME REQ'D.)	ECB0468 ECB0469 ECB0503 (1 REQ'D.)	DP820 DP828 DP832 (2 OF SAME REQ'D.)	1412LH (2 REQ'D.)	MWK1001
	MCM0150K	MCM0150KP					ERP1002					
	MCM0200K	MCM0200KP					ERP1011					
	MCM0300K	MCM0300KP					ERP1012					
	MCM0400K	MCM0400KP										
	MCM0500K	MCM0500KP	ETC0252 (2 REQ'D.)			MNS0012						MWK1002
X-STYLE	MXM0100K	MXM0100KP	ETC0252	EHL0253 EHL0255 (1 REQ'D.)	EHL1003	MNS0009	ERP1001	ERP1011 ERP1012 (4 OF SAME REQ'D.)	ECB0468 ECB0469 ECB0503 (1 REQ'D.)	DP820 DP828 DP832 (2 OF SAME REQ'D.)	1412LH (2 REQ'D.)	MWK1001
	MXM0150K	MXM0150KP					ERP1002					
	MXM0200K	MXM0200KP					ERP1011					
	MXM0300K	MXM0300KP					ERP1012					
			ETC0252 (2 REQ'D.)			MNS0012						MWK1002

Meteor 1 & 2 Ancillary Component Options

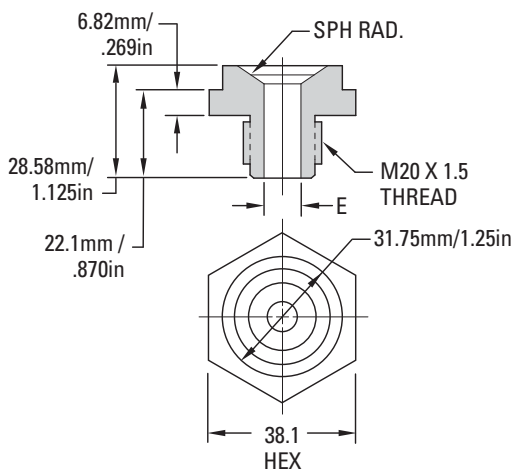
Locating Rings



ITEM NO.	Ø D	Ø X	Ø Y	A	Ø B	C
EHL0253	101 MM 3.990 IN	82.5 MM 3.250 IN	95 MM 3.750 IN	117 MM 4.625 IN	139.5 MM 5.495 IN	73 MM 2.875 IN
EHL0255	101 MM 3.990 IN	82.5 MM 3.250 IN	95 MM 3.750 IN	117 MM 4.625 IN	139.5 MM 5.495 IN	114 MM 24.500 IN

Includes (2) 1/2 inch long, 5/16 Flat Head Cap Screws.

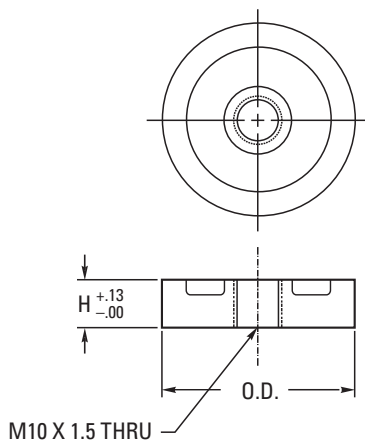
Machine Nozzle Seats



ITEM NO.	E FLOW CHANNEL		SPHERICAL RADIUS
	MM	IN	
MNS0009	9 MM	.354 IN	1/2 + 3/4 IN
MNS1009	9 MM	.354 IN	15.5 MM
MNS0012	12 MM	.472 IN	1/2 + 3/4 IN
MNS1012	12 MM	.472 IN	15.5 MM

NOTE: Machine nozzle tip orifice to be matched properly with nozzle seat flow channel.

Center Support Pads



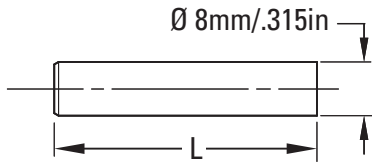
ITEM NO.	O.D.		H	
	MM	IN	MM	IN
ECB0468	30	1.181	20	.787
ECB0469	30	1.181	10	.394
ECB0503	40	1.575	10	.394

NOTES:

1. The M10 X 1.5 tapped hole is used to screw the center support pad to a plate for machining the pad to the correct height.
2. An 8mm dia. dowel pin is required for assembly.

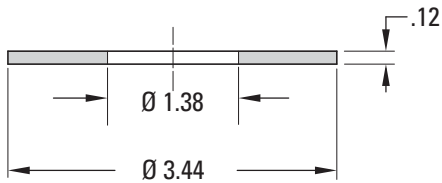
Meteor 1 & 2 Ancillary Component Options

Dowel Pins



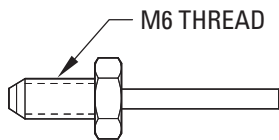
ITEM NO.	L	
	MM	IN
DP820	20	.787
DP828	28	1.102
DP832	32	1.260

Drool Ring



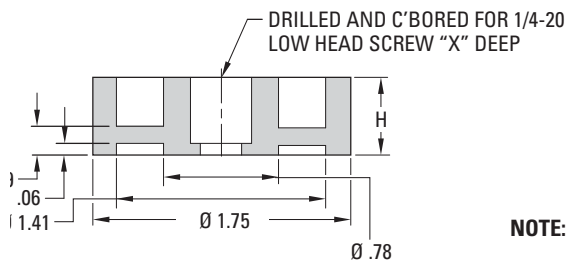
ITEM NO.
EHL1003

Manifold Thermocouple



ITEM NO.
ETC0252

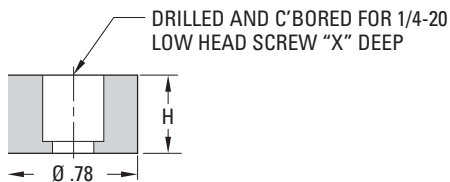
Riser Pads and Screws



ITEM NO.	H		X	
	MM	IN	MM	IN
ERP1001	12.7	.500	10	.405
ERP1002	19	.750	16.6	.655

ITEM NO.	H		X	
	MM	IN	MM	IN
ERP1011	12.7	.500	10	.405
ERP1012	19	.750	16.6	.655

NOTE: For maximum support, use riser pads ERP1001 or ERP1002 whenever possible. Only use riser pads ERP1011 or ERP1012 when there are space constraints.



ITEM NO.
1412LH

1/4-20 x 1/2 lg. LOW HEAD CAP SCREW (L.H.C.S.)