

# DME Hot Sprue Bushings

Reliable direct  
part gating in  
single cavity molds



**DME**  
Every step of the way

## Table of Contents



### **D-MAX High Performance Hot Sprue Bushings.. 153 to 161**

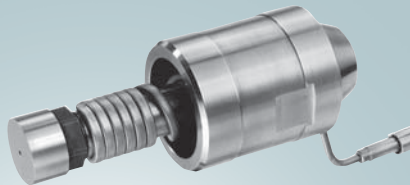
*Capability with engineered and commodity-grade resins*

**Polimax® Replacement Parts ..... 162**



### **Gate-Mate® Hot Sprue Bushings..... 163 to 170**

*Ideal for direct part gating, single-cavity molds*



### **Straight-Shot™ Hot Sprue Bushings..... 171 to 181**

*Reduce cycle times and save material costs*



### **Integrally Heated Hot Sprue Bushings ..... 182 to 187**

*Advanced heat transfer capability promotes a more uniform heat profile*

**Online Price Guide**

Go to [www.dme.net/prices](http://www.dme.net/prices) for the latest pricing guide.