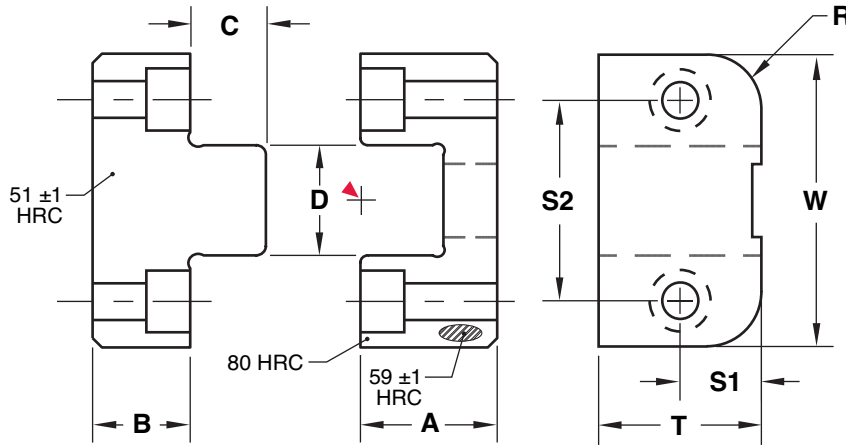
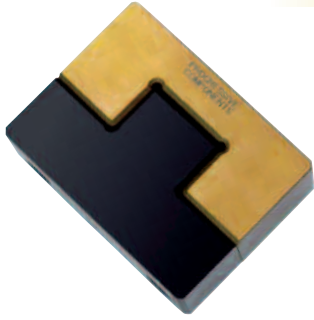


# Top Locks



## Inch Standard

Female: **M** A-2 **H** Core: 58-60 HRC, Surface: 80 HRC **S** Titanium Nitride Coated

Male: **M** O-2 **H** 50-52 HRC **S** Black Oxide

► CAD insertion point

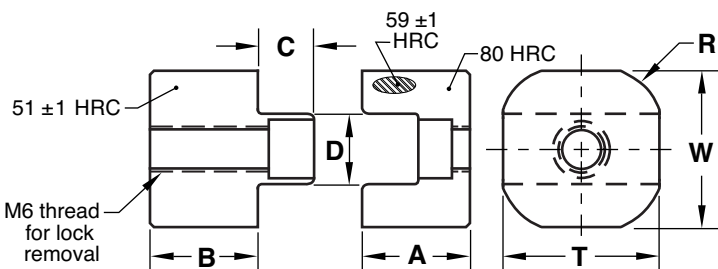
Catalog Number	T +.000 -.002	W +.0000 -.0004	A +.000 -.002	B +.000 -.002	C	D .0001/.0002 Clearance per side	S1 ±.01	S2 ±.01	R Pocket Radius	SHCS
TL62X125	.625	1.250	.625	.500	.41	.438	.312	.875	.250	M: #6-32 x 5/8" F: #6-32 x 3/4"
TL75X125	.750	1.250	.625	.500	.38	.438	.375	.875	.250	M: #8-32 x 5/8" F: #8-32 x 3/4"
TL87X150	.875	1.500	.875	.750	.53	.500	.437	1.000	.250	M: #8-32 x 7/8" F: #8-32 x 1"
TL100X150	1.000	1.500	.875	.375	.50	.500	.500	1.000	.250	M: #10-32 x 1/2" F: #10-32 x 1"
TL100X200	1.000	2.000	1.125	.750	.66	.750	.500	1.375	.375	M: #10-32 x 1" F: #10-32 x 1-1/8"
TL112X200	1.125	2.000	.875	.625	.50	.750	.563	1.375	.375	M: 1/4-20 x 3/4" F: 1/4-20 x 1"
TL112X300	1.125	3.000	1.500	.750	.78	1.125	.562	2.250	.500	M: 1/4-20 x 7/8" F: 1/4-20 x 1-5/8"
TL150X250	1.500	2.500	1.375	.625	.75	1.000	.750	1.750	.375	M: 1/4-20 x 3/4" F: 1/4-20 x 1-1/2"
TL175X300	1.750	3.000	1.250	.875	.75	1.125	.875	2.250	.500	M: 5/16-18 x 1" F: 5/16-18 x 1-1/4"
TL200X350	2.000	3.500	1.750	.750	1.00	1.500	1.000	2.500	.500	M: 3/8-16 x 7/8" F: 3/8-16 x 2"

## Metric Standard

Note: All dimensions and tolerances are in millimeters.

Catalog Number	T +.00 -.05	W +.00 -.01	A +.00 -.05	B +.00 -.05	C	D .002/.005 Clearance per side	S1 ±.25	S2 ±.25	R Pocket Radius	SHCS
TLM20X20	20	20	14	14	7	9	Center	Center	5	M: M4 x 25 F: M4 x 10
TLM26X35	26	35	25	15	16	11	13	23	8	M: M5 x 16 F: M5 x 25
TLM30X45	30	45	25	15	16	15	15	30	8	M: M6 x 18 F: M6 x 25
TLM36X55	36	55	30	20	20	20	18	37.5	8	M: M8 x 22 F: M8 x 35
TLM36X75	36	75	35	20	26	30	18	52	8	M: M10 x 25 F: M10 x 35
TLM45X100	45	100	60	20	41	40	22.5	70	8	M: M10 x 25 F: M10 x 65

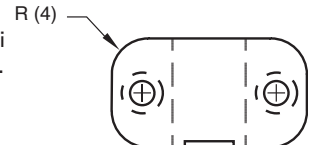
## TLM20X20 Specifications:



## Additional Option:

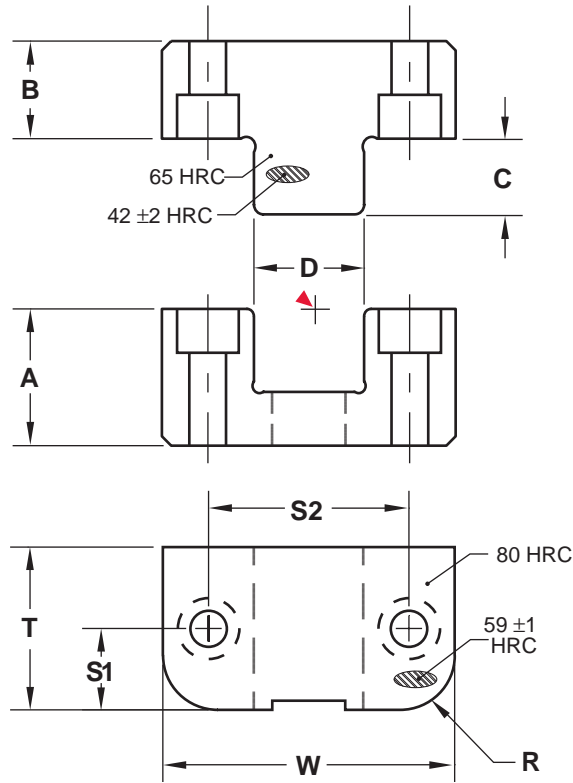
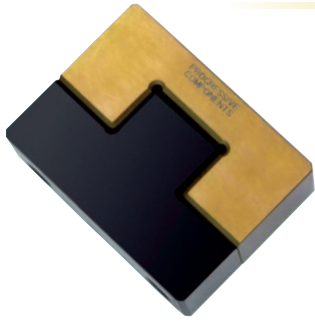
Screws included.

Top Locks (except TLM20X20) are also available with dual radii for mounting internally. To order, specify the catalog number followed by "-R". Ex. TL112X200-R.





# Top Locks



Female: **M** A-2 **H** Core: 58-60 HRC, Surface: 80 HRC **S** Titanium Nitride Coated

Male: **M** H-13 **H** Core: 40-44 HRC, Surface: 65 HRC **S** Melonite® (SBN)

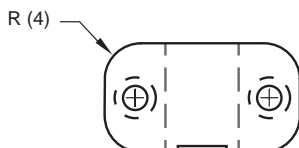
► CAD insertion point

Catalog Number	T +.000 -.002	W +.0000 -.0004	A +.000 -.002	B +.000 -.002	C ±.01	D .0001/.0002 Clearance per side	S1 ±.01	S2 ±.01	R Pocket Radius	SHCS
TL62X125	.625	1.250	.625	.500	.41	.438	.312	.875	.250	M: #6-32 x 5/8" F: #6-32 x 3/4"
TL75X125	.750	1.250	.625	.500	.38	.438	.375	.875	.250	M: #8-32 x 5/8" F: #8-32 x 3/4"
TL87X150	.875	1.500	.875	.750	.53	.500	.437	1.000	.250	M: #8-32 x 7/8" F: #8-32 x 1"
TL100X150	1.000	1.500	.875	.375	.50	.500	.500	1.000	.250	M: #10-32 x 1/2" F: #10-32 x 1"
TL100X200	1.000	2.000	1.125	.750	.66	.750	.500	1.375	.375	M: #10-32 x 1" F: #10-32 x 1-1/8"
TL112X200	1.125	2.000	.875	.625	.50	.750	.563	1.375	.375	M: 1/4-20 x 3/4" F: 1/4-20 x 1"
TL112X300	1.125	3.000	1.500	.750	.78	1.125	.562	2.250	.500	M: 1/4-20 x 7/8" F: 1/4-20 x 1-5/8"
TL150X250	1.500	2.500	1.375	.625	.75	1.000	.750	1.750	.375	M: 1/4-20 x 3/4" F: 1/4-20 x 1-1/2"
TL175X300	1.750	3.000	1.250	.875	.75	1.125	.875	2.250	.500	M: 5/16-18 x 1" F: 5/16-18 x 1-1/4"
TL200X350	2.000	3.500	1.750	.750	1.00	1.500	1.000	2.500	.500	M: 3/8-16 x 7/8" F: 3/8-16 x 2"

**C** [www.procomps.com/customs](http://www.procomps.com/customs)

**D** [www.procomps.com/design](http://www.procomps.com/design)

Screws included.



Top Locks are also available with dual radii for mounting internally. To order, specify the catalog number followed by "-R".

Ex. TL112X200-R