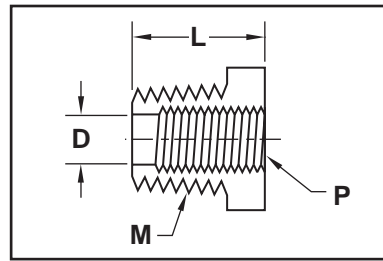


Fittings

M Brass

Catalog Number	M NPT	P NPT	L	D
RB18-0	1/8	#10-32 UNF	.56	.156
RB18-1	1/8	1/16	.56	.250
RB14-0	1/4	#10-32 UNF	.75	.156
RB14-2	1/4	1/8	.75	.328
RB38-4	3/8	1/4	.75	.422
RB50-6	1/2	3/8	1.00	.562

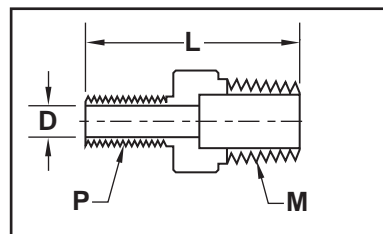


Reducing Bushings



M Brass

Catalog Number	M NPT	P NPT	L	D
MR18-1	1/8	1/16	1.19	.187
MR14-2	1/4	1/8	1.22	.220
MR38-4	3/8	1/4	1.41	.314
MR50-6	1/2	3/8	1.62	.440

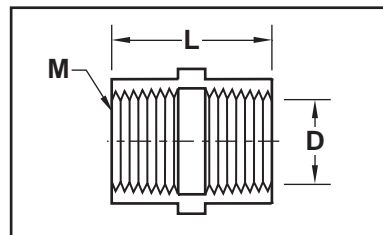


Male Reducers



M Brass

Catalog Number	M NPT	L	D
C18	1/8	.75	.328
C14	1/4	1.12	.422
C38	3/8	1.12	.562
C50	1/2	1.50	.688

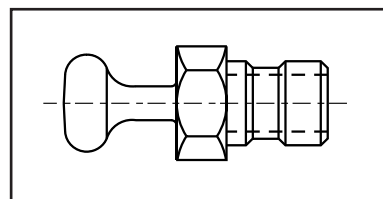


Couplings



M Brass

Catalog Number	Fits Socket Series No.
CP200	200 (1/4" Flow)
CP300	300 (3/8" Flow)
CP500	500 (1/2" Flow)



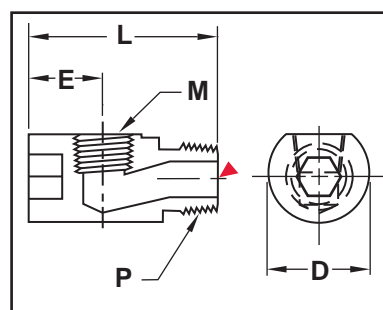
Cover Plugs



M Brass

▶ CAD insertion point

Catalog Number	M NPT	P NPT	Hex Size	L	D	E
HKL1616	1/16	1/16	1/4	1.156	.552	.531
HKL1618	1/16	1/8	5/16	1.218	.615	.531
HKL1818	1/8	1/8	5/16	1.312	.615	.580
HKL1814	1/8	1/4	3/8	1.500	.860	.593
HKL1414	1/4	1/4	3/8	1.625	.860	.660
HKL1438	1/4	3/8	1/2	1.625	.985	.712
HKL3838	3/8	3/8	1/2	1.750	.985	.780
HKL1212	1/2	1/2	1/2	2.250	1.235	.940



Hex Key Street Els

