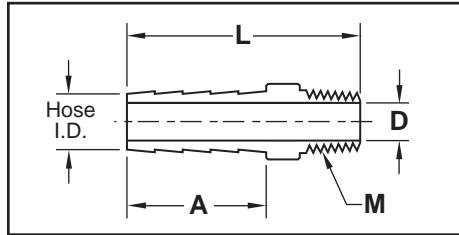




Fittings

Male Hose Barbs

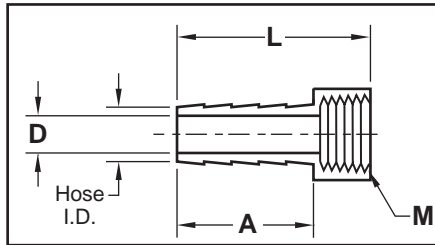
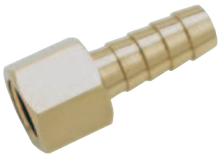


Note: MB16 and MB18 includes Buna O-ring and clamp.

M Brass

Catalog Number	M NPT	Hose I.D.	D	A	L
MB16-0	#10-32 UNF	1/16	.052	.45	.57
MB18-0	#10-32 UNF	1/8	.090	.56	.81
MB18-2	1/8	1/8	.093	.50	1.03
MB14-2	1/8	1/4	.187	.97	1.54
MB14-4	1/4	1/4	.187	.97	1.64
MB15-2	1/8	5/16	.250	.97	1.54
MB15-4	1/4	5/16	.250	.97	1.64
MB38-2	1/8	3/8	.281	.97	1.54
MB38-4	1/4	3/8	.281	.97	1.64
MB50-4	1/4	1/2	.375	.97	1.64
MB50-6	3/8	1/2	.375	.97	1.76
MB50-8	1/2	1/2	.375	.97	1.86
MB75-8	1/2	3/4	.562	.97	1.86
MB75-12	3/4	3/4	.562	.97	1.97

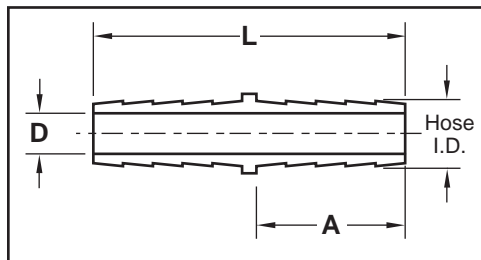
Female Hose Barbs



M Brass

Catalog Number	M NPT	Hose I.D.	D	A	L
FB14-2	1/8	1/4	.187	.97	1.47
FB14-4	1/4	1/4	.187	.97	1.58
FB15-4	1/4	5/16	.250	.97	1.58
FB38-2	1/8	3/8	.281	.97	1.47
FB38-4	1/4	3/8	.281	.97	1.58
FB50-6	3/8	1/2	.375	.97	1.63
FB50-8	1/2	1/2	.375	.97	1.73

Hose Splicers



M Brass

Catalog Number	Hose I.D.	D	A	L
HS14	1/4	.187	.97	2.00
HS38	3/8	.281	.97	2.00
HS50	1/2	.375	.97	2.00

Alternate materials and configurations available:

To order barbs and splicers for use with Push-Lok hose, specify "-PL" at the end of the catalog number.
Ex. HS14-PL or MB14-2-PL