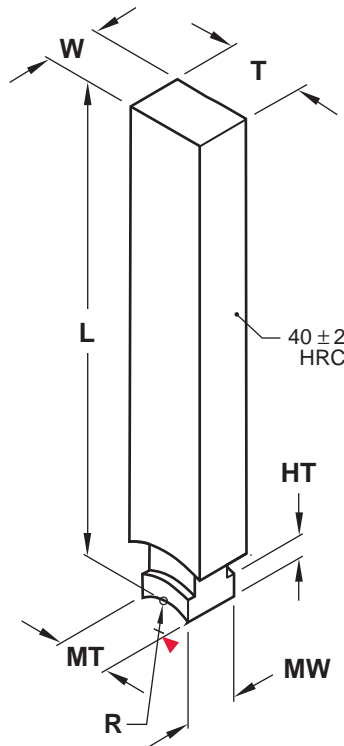


UniLifter®

Core Blades



Flat Core Blades - Metric Standard

Note: All dimensions and tolerances are in millimeters.

▶ CAD insertion point

MW	R	HT	Catalog Number	T +.000 -.025	W +.000 -.025	L +2 -0	MT MIN. THK.
10	10	5	CBMM10X10L250	10.25	10.25	250	10.0
			CBMM15X15L250	15.25	15.25	250	15.0
			CBMM20X20L400	20.25	20.25	400	15.0

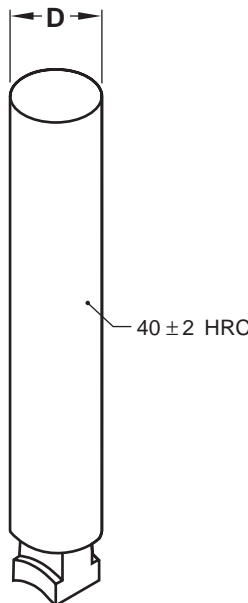
Flat Core Blades - Inch Standard

MW	R	HT	Catalog Number	T +.000 -.001	W +.000 -.001	L +.06 -.00	MT MIN. THK.
MiniLifter® .250	.250	.156	CBS37X25L8	.385	.260	8	.25
			CBS50X25L8	.510	.260	8	.31
			CBS75X37L8	.760	.385	8	.31
UniLifter .500	.406	.187	CBS50X50L8	.510	.510	8	.49
			CBS50X50L14	.510	.510	14	.49
			CBS50X100L8	.510	1.010	8	.49
			CBS50X100L14	.510	1.010	14	.49
			CBS50X150L14	.510	1.510	14	.49
			CBS75X50L14	.760	.510	14	.62
			CBS75X150L8	.760	1.510	8	.62
			CBS75X150L14	.760	1.510	14	.62
			CBS100X50L8	1.010	.510	8	.62
			CBS100X50L14	1.010	.510	14	.62
			CBS150X50L8	1.510	.510	8	.62
			CBS150X50L14	1.510	.510	14	.62
			CBS150X75L8	1.510	.760	8	.62
			CBS150X75L14	1.510	.760	14	.62
XL 1.000	.875	.375	CBS100X100L10	1.010	1.010	10	1.00
			CBS100X100L18	1.010	1.010	18	1.00
			CBS100X150L10	1.010	1.510	10	1.00
			CBS100X150L18	1.010	1.510	18	1.00
			CBS150X100L10	1.510	1.010	10	1.00
			CBS150X100L18	1.510	1.010	18	1.00

M H-13 **H** 38-42 HRC

C www.procomps.com/customs

The UniLifter Series (MW=.500) is also available in aluminum bronze. To order, replace "CBS" with "CBA" in the catalog number as shown: CBA50X50L14.



Round Core Blades - Metric Standard

Note: All dimensions and tolerances are in millimeters.

MW	R	HT	Catalog Number	D +.000 -.025	L +2 -0	MT MIN. THK.
10	10	5	CBMM15DL250	15.00	250	10.0

Round Core Blades - Inch Standard

MW	R	HT	Catalog Number	D +.000 -.001	L +.06 -.00	MT MIN. THK.
MiniLifter .250	.250	.156	CBS43DL8	.437	8	.31
UniLifter .500	.406	.187	CBS75DL8	.750	8	.62
			CBS75DL14	.750	14	.62
			CBS75DL18	.750	18	.62
XL 1.000	.875	.375	CBS125DL10	1.250	10	1.00
			CBS125DL18	1.250	18	1.00

US Patent No. 5,137,442, and No. 5,316,467
 Canada Patent No. 2,048,218
 European Patent No. EP498102
 Mexico Patent No. 175084



UniLifter®

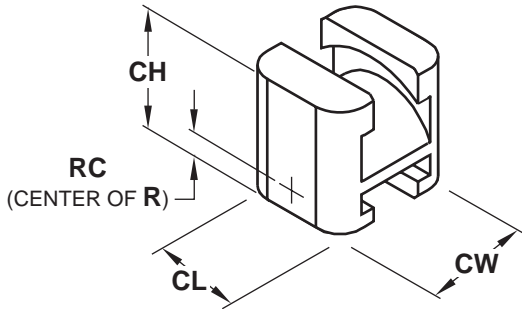
U-Couplings

Metric Standard

Note: All dimensions and tolerances are in millimeters.

M H-13 **S** Blackened

Series	R	RC	Catalog Number	CW	CL	CH
Metric	10	6	UCMM22	22	18	25



Inch Standard

M H-13 **S** Blackened

Series	R	RC	Catalog Number	CW	CL	CH
MiniLifter®	.250	.125	UCM50	.50	.44	.62
UniLifter	.406	.187	UCU87	.87	.75	.87
XL	.875	.125	UCX175	1.75	1.50	1.65

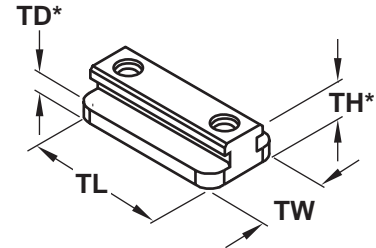
T-Gibs

Metric Standard

Note: All dimensions and tolerances are in millimeters.

M 4140 **S** Blackened

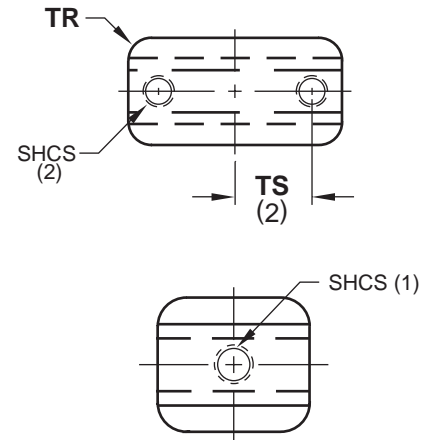
Series	TW	TH	TD*	TR	SHCS (INCLUDED)	CATALOG NUMBER	TS	TL	TRAVEL ALLOWED
Metric	+0.00 -.025	+0.25 -.00	+0.25 -.00	5	M-5x20	TGMM10	10	+0.0 -.25	10
						TGMM30	15		30



Inch Standard

M 4140 **S** Blackened

Series	TW	TH	TD*	TR	SHCS (INCLUDED)	CATALOG NUMBER	TS	TL	TRAVEL ALLOWED
MiniLifter	+0.00 -.001	+0.010 -.000	+0.010 -.000	.093	#10-32x1	TGM31	-	.750	.312
						TGM100	.500	1.50	1.000
UniLifter	.875	.468	.219	.187	1/4-20x3/4	TGU25	-	1.00	.250
						TGU50	.375	1.25	.500
						TGU100	.625	1.75	1.000
						TGU150	.750	2.25	1.500
XL	1.750	.625	.250	.312	3/8-16x1-1/4	TGX50	.625	2.00	.500
						TGX100	.875	2.50	1.000
						TGX250	1.375	4.00	2.500



Plan view for TGM100 and TGU25.

C www.procomps.com/customs

*TD Includes fitting stock for final adjustments.

D www.procomps.com/design

US Patent No. 5,137,442, and No. 5,316,467
 Canada Patent No. 2,048,218
 European Patent No. EP498102
 Mexico Patent No. 175084