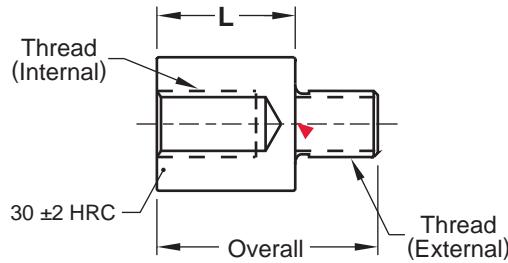
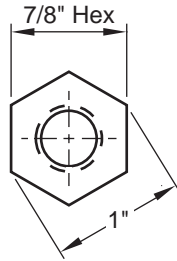




PKO™ Extensions

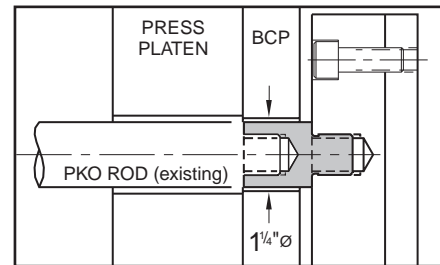
Hex Series



M AISI 4140 Pre-Hard **H** 28-32 HRC **S** Black Oxide

▶ CAD insertion point

Catalog Number	Thread Internal & External	Overall	L
PH37L10	3/8-16	1.672	1.052
PH50L10	1/2-13		
PH62L10	5/8-11		
PH75L10	3/4-10	1.922	
PH75L10-NT	3/4-10*		
PH37L15	3/8-16	2.172	1.552
PH50L15	1/2-13		
PH62L15	5/8-11		
PH75L15	3/4-10	2.422	
PH75L15-NT	3/4-10*		



"L" DIMENSIONS:
1.052 = .875 (BCP) + .187 (Stop Pins) - .010
1.552 = 1.375 (BCP) + .187 (Stop Pins) - .010

C www.procomps.com/customs

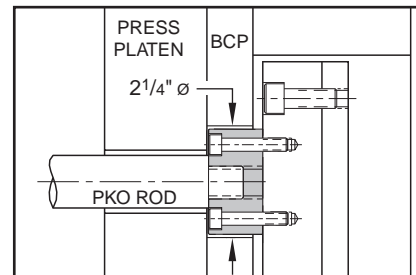
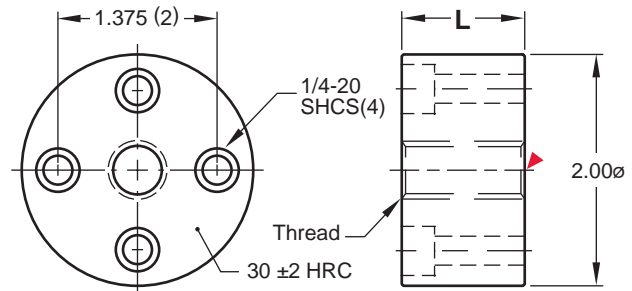
*External thread only. Mold maker machines internal thread on "NT" style to suit non-standard applications.

Puck Series



H 28-32 HRC **S** Black Oxide
M AISI 4140 Pre-Hard Screws included.

Catalog Number	Thread	L
PKP37L10	3/8-16	1.052
PKP50L10	1/2-13	
PKP62L10	5/8-11	
PKP75L10	3/4-10	
PKPL10-NT	No Thread*	
PKP37L15	3/8-16	1.552
PKP50L15	1/2-13	
PKP62L15	5/8-11	
PKP75L15	3/4-10	
PKPL15-NT	No Thread*	



*Mold maker machines thread on "NT" style to suit non-standard applications.