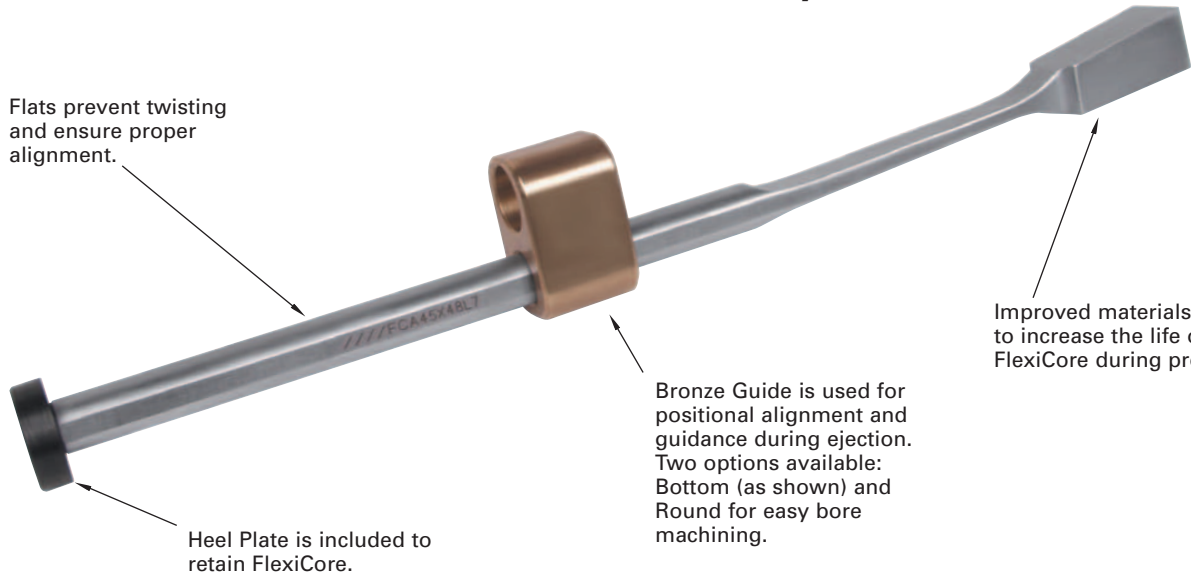


# FlexiCore®

## Undercut Release System

Flats prevent twisting and ensure proper alignment.

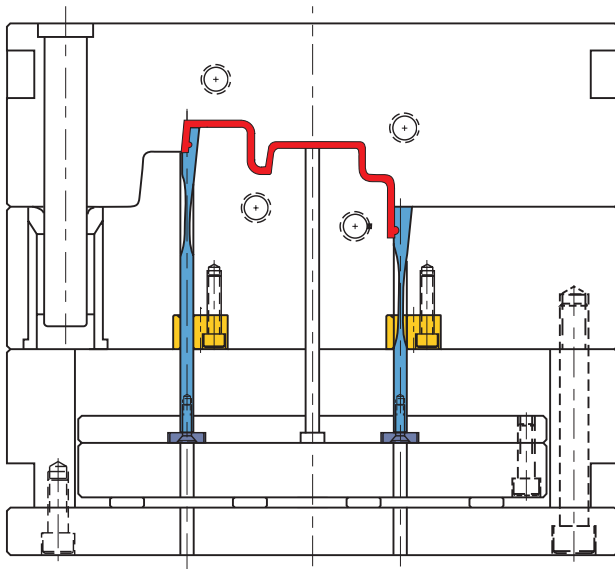


Improved materials used to increase the life of the FlexiCore during production.

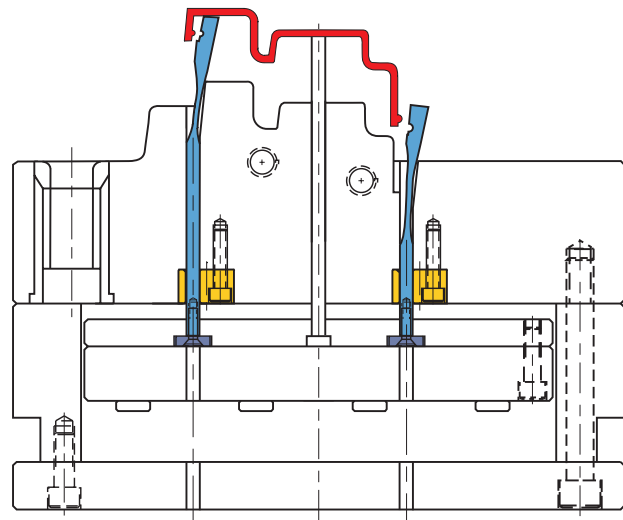
Bronze Guide is used for positional alignment and guidance during ejection. Two options available: Bottom (as shown) and Round for easy bore machining.

Heel Plate is included to retain FlexiCore.

FlexiCore Assembly includes: FlexiCore, Bronze Guide (Bottom or Round), Heel Plate, and Flat Head Cap Screw.



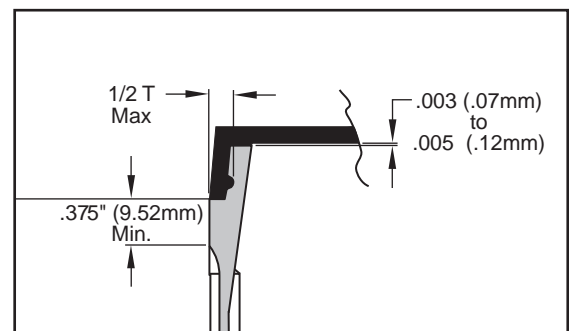
**Mold Closed**



**Mold Open**

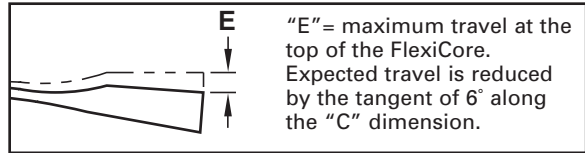
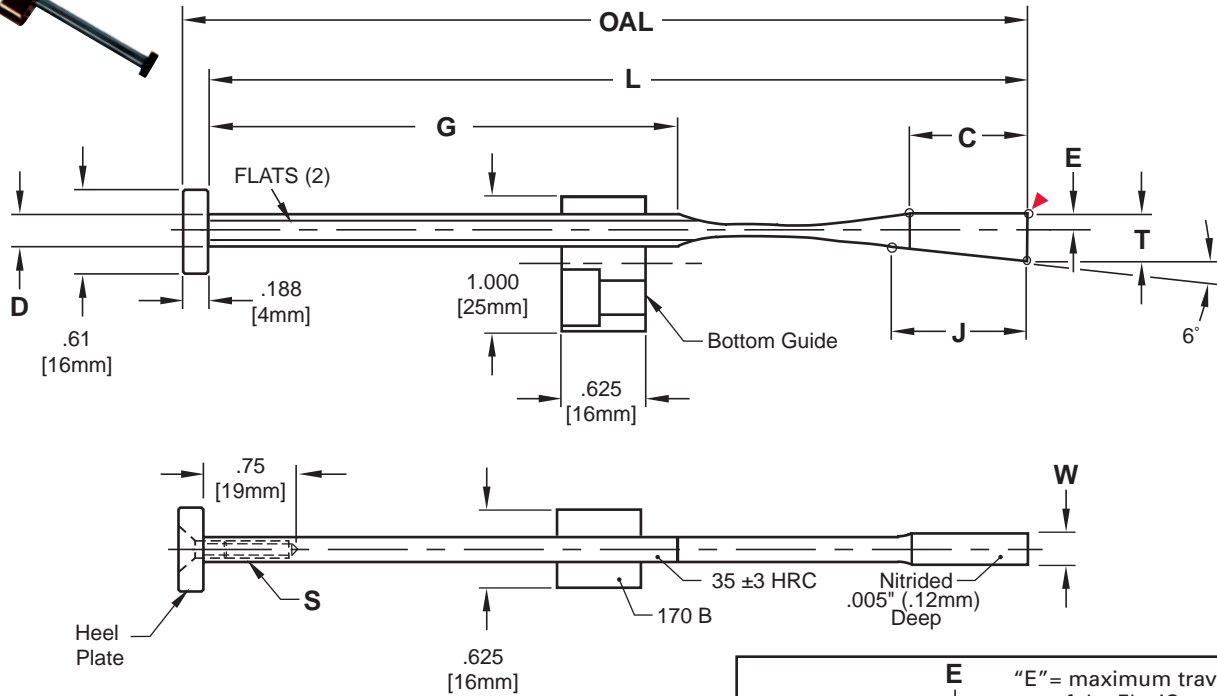
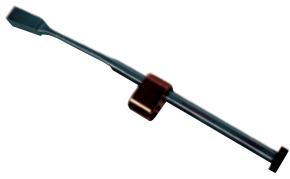
### Application Guidelines:

1. The distance from the top of the FlexiCore and the back side of the guide should be 3.375" (85mm) minimum to provide maximum guidance.
2. The FlexiCore should not completely leave the pocket at the full ejection stroke.
3. Only surface treatments applied at low temperatures such as Electroless Nickel-based or chromium deposition treatments are permitted.
4. Design and installation guidelines available at [www.procomps.com](http://www.procomps.com). Please contact Engineering to review any designs if questions arise or if your application differs from the examples shown.



# FlexiCore®

## Bottom Guide Assembly



### Inch Standard

**M** FlexiCore: 4340, Guide: CA954 Solid Bronze, Heel Plate: AISI 1018

▶ CAD insertion point

Catalog Number	T	W	L	OAL	D	C	E	G	J	S
	+0.02 -0.00	+0.02 -0.00	+0.01 -0.00	REF	+0.00 -0.001	±0.015		+0.01 -0.00		
FCA35X24L6	.354	.244	6.400	6.588	.234	.875	.137	3.49	.957	#8-32
FCA35X32L6	.354	.322	6.400	6.588	.250	.875	.137	3.48	.957	#8-32
FCA45X40L7	.453	.401	7.875	8.062	.312	1.000	.177	4.38	1.025	#10-24
FCA45X48L7	.453	.480	7.875	8.062	.312	1.000	.177	4.38	1.025	#10-24

### Metric Standard

Note: All dimensions and tolerances are in millimeters.

**M** FlexiCore: 4340, Guide: CA954 Solid Bronze, Heel Plate: AISI 1018

Catalog Number	T	W	L	OAL	D	C	E	G	J	S
	+0.05 -0.00	+0.05 -0.00	+0.25 -0.00	REF	+0.00 -0.025	±0.35		+0.25 -0.00		
FCA9X6L160	9	6.2	162.5	166.5	5.94	22	3.5	88.6	24.3	M4-.7 x 20
FCA9X8L160	9	8.2	162.5	166.5	6.35	22	3.5	88.4	24.3	M4-.7 x 20
FCA11X10L200	11.5	10.2	200.0	204.0	7.92	26	4.5	111.2	26.0	M5-.8 x 20
FCA11X12L200	11.5	12.2	200.0	204.0	7.92	26	4.5	111.2	26.0	M5-.8 x 20

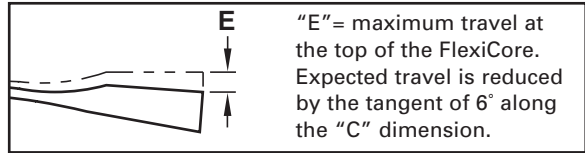
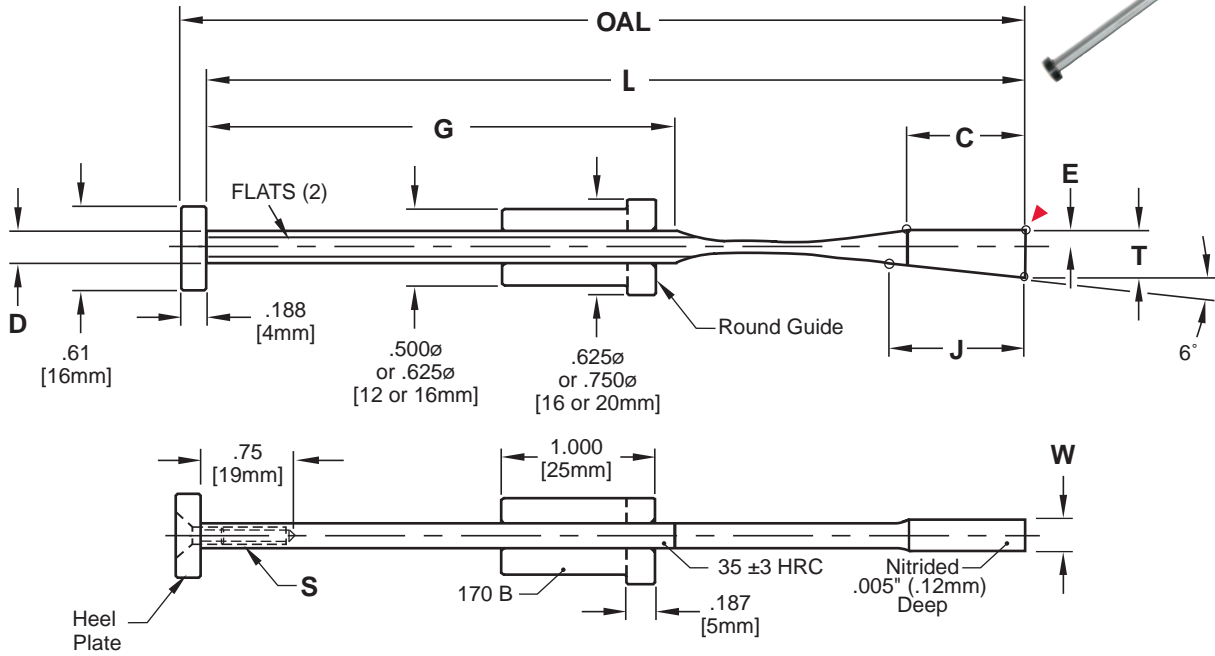
**C** [www.procomps.com/customs](http://www.procomps.com/customs)

**D** [www.procomps.com/design](http://www.procomps.com/design)

Assemblies include: FlexiCore, Bottom Guide, Heel Plate, and Flat Head Cap Screw. Replacement components also sold individually. Contact Customer Service for information.

# FlexiCore®

## Round Guide Assembly



### Inch Standard

**M** FlexiCore: 4340, Guide: CA954 Solid Bronze, Heel Plate: AISI 1018

► CAD insertion point

Catalog Number	T	W	L	OAL	D	C	E	G	J	S	A	B
FCR35X24L6	.354 +.002 -.000	.244 +.002 -.000	6.400 +.010 -.000	6.588 REF	.234 +.000 -.001	.875 ±.015	.137	3.49 +.01 -.00	.957	#8-32	.625	.500
FCR35X32L6	.354	.322	6.400	6.588	.250	.875	.137	3.48	.957	#8-32	.625	.500
FCR45X40L7	.453	.401	7.875	8.062	.312	1.000	.177	4.38	1.025	#10-24	.750	.625
FCR45X48L7	.453	.480	7.875	8.062	.312	1.000	.177	4.38	1.025	#10-24	.750	.625

### Metric Standard

Note: All dimensions and tolerances are in millimeters.

**M** FlexiCore: 4340, Guide: CA954 Solid Bronze, Heel Plate: AISI 1018

Catalog Number	T	W	L	OAL	D	C	E	G	J	S	A	B
FCR9X6L160	9 +.05 -.00	6.2 +.05 -.00	162.5 +.25 -.00	166.5 REF	5.94 +.000 -.025	22 ±.35	3.5	88.6 +.25 -.00	24.3	M4-7 x 20	16	12
FCR9X8L160	9	8.2	162.5	166.5	6.35	22	3.5	88.4	24.3	M4-7 x 20	16	12
FCR11X10L200	11.5	10.2	200.0	204.0	7.92	26	4.5	111.2	26.0	M5-8 x 20	20	16
FCR11X12L200	11.5	12.2	200.0	204.0	7.92	26	4.5	111.2	26.0	M5-8 x 20	20	16

**C** [www.procomps.com/customs](http://www.procomps.com/customs)

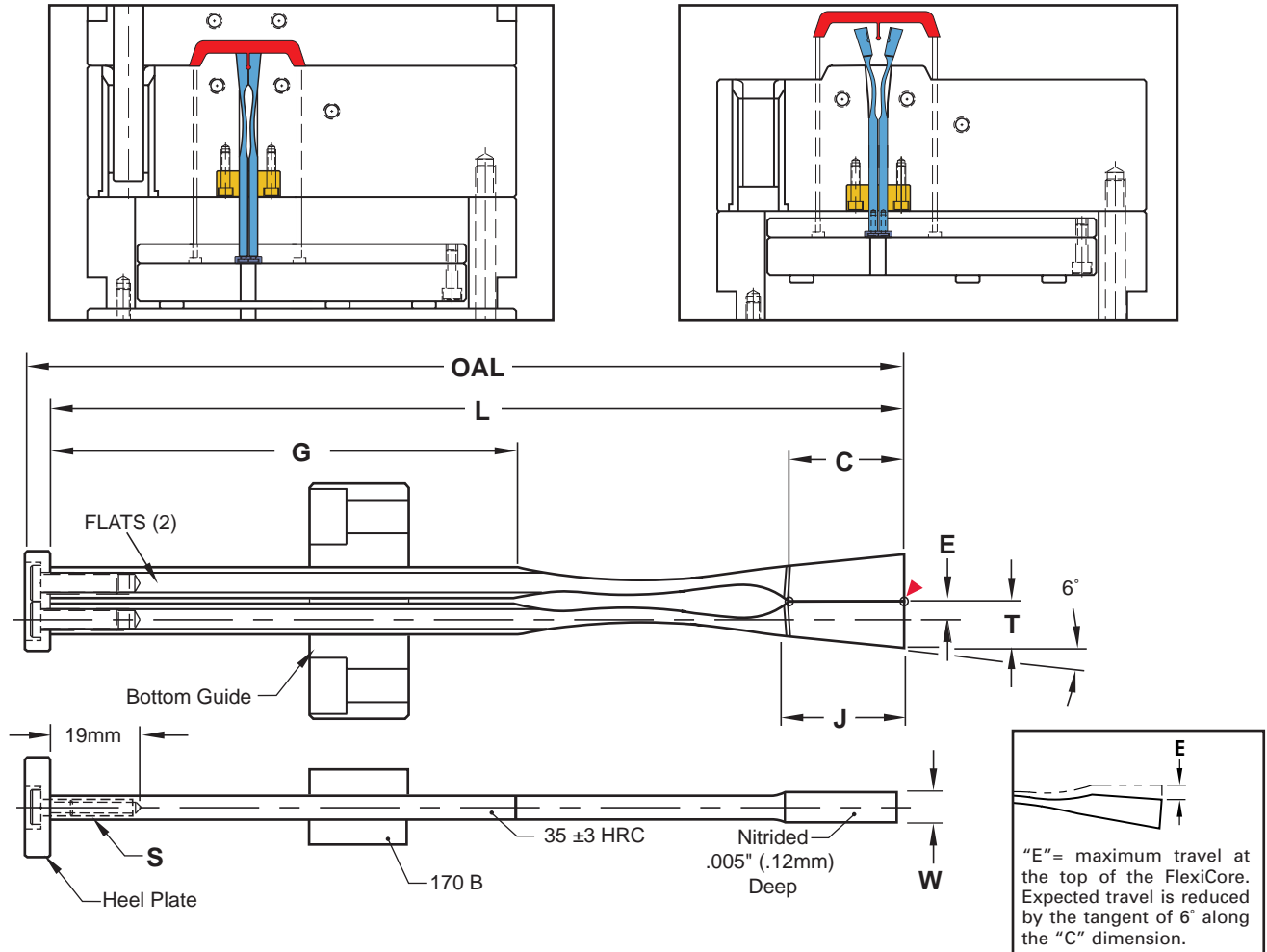
**D** [www.procomps.com/design](http://www.procomps.com/design)

Assemblies include: FlexiCore, Round Guide, Heel plate, and Flat head Cap Screw.  
Replacement components also sold individually. Contact Customer Service for information.

# FlexiCore®

## Double Actuation

The double action bottom guide allows for the FlexiCore System to be used to release boss details with undercuts. FlexiCore Double Assembly (FCDA) includes: two FlexiCores, one Bottom Guide, one Heel Plate, and two Low Head Cap Screws.



"E" = maximum travel at the top of the FlexiCore. Expected travel is reduced by the tangent of 6° along the "C" dimension.

### Inch Standard

**M** FlexiCore: 4340, Guide: CA954 Solid Bronze, Heel Plate: AISI 1018

▶ CAD insertion point

Catalog Number	T	W	L	OAL	D	C	E	G	J	S
	+0.002 -.000	+0.002 -.000	+0.01 -.00	REF	+0.000 -.001	±0.015		+0.01 -.00		
FCDA35X24L6	.354	.244	6.400	6.588	.234	.875	.137	3.49	.957	#8-32
FCDA45X48L7	.453	.480	7.875	8.062	.312	1.000	.177	4.38	1.025	#10-24

### Metric Standard

Note: All dimensions and tolerances are in millimeters.

**M** FlexiCore: 4340, Guide: CA954 Solid Bronze, Heel Plate: AISI 1018

Catalog Number	T	W	L	OAL	D	C	E	G	J	S
	+0.05 -.00	+0.05 -.00	+0.25 -.00	REF	+0.000 -.025	±0.35		+0.25 -.00		
FCDA9X6L160	9	6.2	162.5	166.5	5.94	22	3.5	88.6	24.3	M4-.7 x 20
FCDA11X12L200	11.5	12.2	200.0	204.0	7.92	26	4.5	111.2	26.0	M5-.8 x 20

# FlexiCore® Accessories

## Wear Blocks

### Inch Standard

**M** P-20 Pre-Hard **H** Nitrided .005" Deep

Catalog Number	W +.002 -.000	D ±.01	B +.001 -.000	C +.001 -.000	T Thread
FCWB-24	.244	.250	.626	.533	#10-24
FCWB-32	.322	.250	.626	.533	1/4-20
FCWB-40	.401	.250	.567	.474	1/4-20
FCWB-48	.480	.250	.567	.474	1/4-20

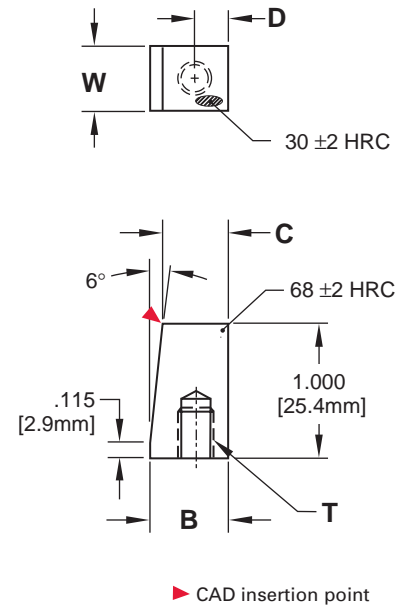
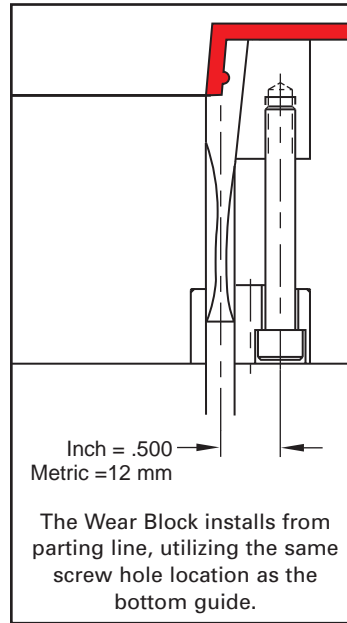
Note: FCWB-24 is designed for use with a 1/4Ø shoulder bolt.

### Metric Standard

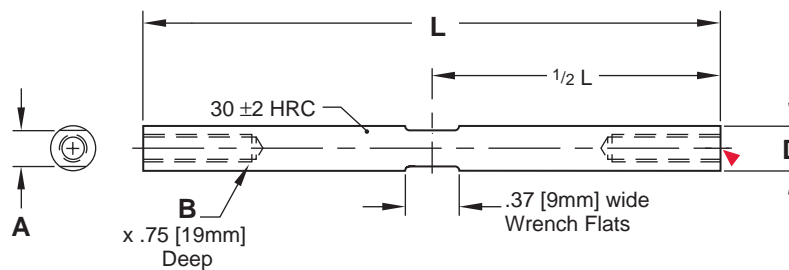
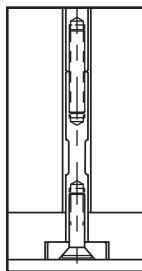
All dimensions are in millimeters.

**M** P-20 Pre-Hard **H** Nitrided 12mm Deep

Catalog Number	W +.05 -.00	D ±.25	B +.025 -.000	C +.025 -.000	T Thread
FCWBM-6	6.2	7.2	15.9	13.55	M5-8
FCWBM-8	8.2	7.2	15.9	13.55	M6-1
FCWBM-10	10.2	7.2	14.4	12.05	M6-1
FCWBM-12	12.2	7.2	14.4	12.05	M6-1



## Extensions



### Inch Standard

**M** 4140 Pre-Hard

▶ CAD insertion point

D +.000 -.002	B	A	L +.01 -.00	
			2"	4"
.232	#8-32	.187	FCX8L2	FCX8L4
.310	#10-24	.250	FCX10L2	FCX10L4

Includes threaded stud for attachment to FlexiCore.

### Metric Standard

All dimensions are in millimeters.

**M** 4140 Pre-Hard

D +.00 -.05	B	A	L +.25 -.00	
			50mm	100mm
6	M4-7	4.8	FCXM4L50	FCXM4L100
8	M5-8	6.3	FCXM5L50	FCXM5L100