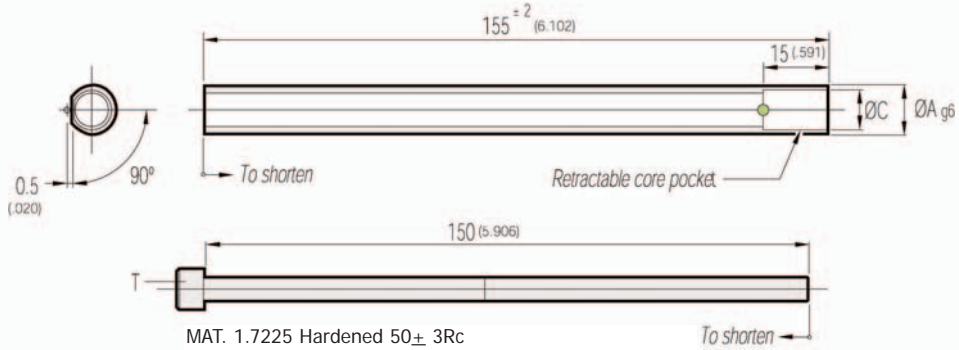


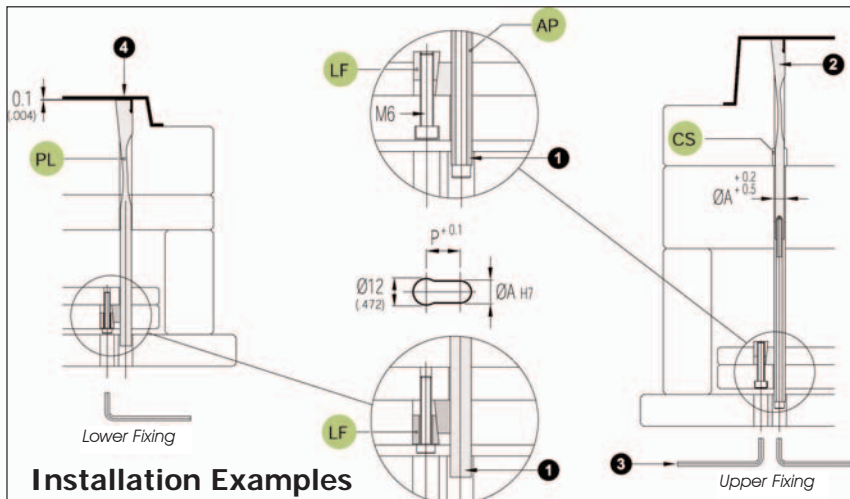
Retractable Core Extension

Patented Cumsa System



CATALOG NUMBER	A	C	P	T
AP 080615	8	6	14.5	M4
AP 100815	10	8	15.5	M5
AP 121015	12	10	16.5	M6

- For use with the Keyed Retractable Core
- Extends Retractable Core up to 140mm (5.51)



Installation Examples

1. Cut the length as required
2. Adjust the retractable core with H7 Tolerances
3. Tighten the Conical lock (LF)
4. Reduce head by 0.1mm to assure scuff-free retraction of core