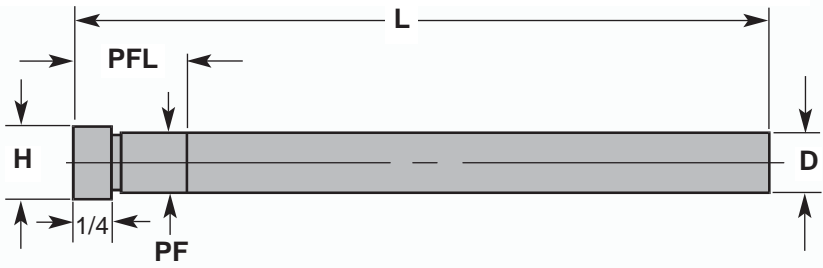


Angle Pins

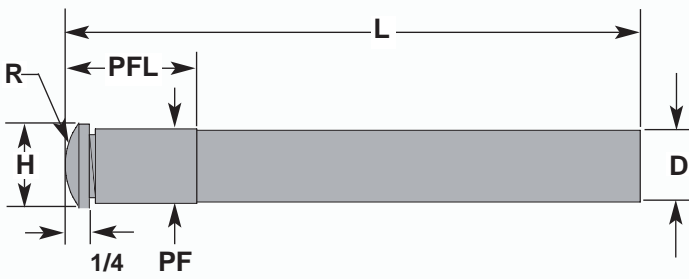


Tolerances	
Pin Diameter (D)	+ .0000 - .0005
Press Fit Diameter (PF)	+ .0005 - .0000
Head Diameter	+ .000 - .010
Head Thickness (T)	+ .000 - .005
Overall Length (L)	+ .125 + .000

CATALOG NUMBER	NOMINAL DIA	D ACTUAL SIZE	PF PRESS FIT DIA	H HEAD DIA	PFL PRESS FIT LENGTH	L OVERALL LENGTH
A25-L6	3/8	.374	.376	1/2	7/8	6
A25-L10	3/8	.374	.376	1/2	1-3/8	10
A33-L6	1/2	.499	.501	5/8	7/8	6
A33-L10	1/2	.499	.501	5/8	1-3/8	10
A37-L6	5/8	.624	.626	3/4	7/8	6
A37-L10	5/8	.624	.626	3/4	1-3/8	10
A41-L10	3/4	.749	.751	7/8	1-3/8	10

- Premium hotwork steel
- Surface hardness 65-74 Rc
- Core hardness 35 - 40 Rc
- Ground, Nitrided
- Above Applies to Radius Angle Pin

Radius Angle Pins



Tolerances	
Pin Diameter (D)	+ .0000 - .0005
Press Fit Diameter (PF)	+ .0005 - .0000
Head Diameter (H)	+ .000 + .010
Head Thickness (T)	+ .000 + .005
Overall Length (L)	+ .125 + .000

Counterbore Depth		
D PIN DIA	ANGLE	C'Bore DEPTH
.375	10°	.258
	15°	.265
	20°	.276
	25°	.291
.500	10°	.260
	15°	.270
	20°	.284
	25°	.304
.625	10°	.262
	15°	.274
	20°	.292
	25°	.316
.750	10°	.264
	15°	.278
	20°	.300
	25°	.329

CATALOG NUMBER	NOMINAL DIA	D ACTUAL SIZE	PF PRESS FIT DIA	R HEAD RADIUS	H HEAD DIA	PFL PRESS FIT LENGTH	L OVERALL LENGTH
APR25-L6	3/8	.374	.376	3/8	1/2	7/8	6
APR25-L10	3/8	.374	.376	3/8	1/2	1-3/8	10
APR33-L6	1/2	.499	.501	1/2	5/8	7/8	6
APR33-L10	1/2	.499	.501	1/2	5/8	1-3/8	10
APR37-L6	5/8	.624	.626	5/8	3/4	7/8	6
APR37-L10	5/8	.624	.626	5/8	3/4	1-3/8	10
APR41-L10	3/4	.749	.751	3/4	7/8	1-3/8	10
APR41-L14	3/4	.749	.751	3/4	7/8	1-3/8	14

Home of the Hardened Throughout™ Pin

