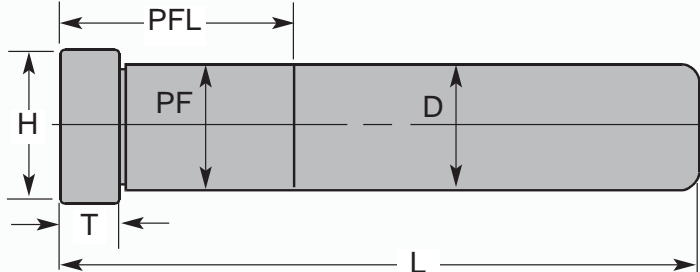




Metric Straight Leader Pins

General Dimensions			
D	H ^{+0.0mm} _{-.25mm}	T ^{+0.0mm} _{-.13mm}	PF
20 mm	25 mm	5 mm	20 mm
25 mm	31 mm	6 mm	25 mm
30 mm	36 mm	8 mm	30 mm
40 mm	46 mm	8 mm	40 mm
50 mm	56 mm	8 mm	50 mm
60 mm	66 mm	8 mm	60 mm



*All pin diameters on working end are $-.025$ mm undersize. Press fit diameters are $+.025$ mm

L LENGTH	D = 20 MM		D = 25 MM		D = 30 MM		D = 40 MM		D = 50 MM		D = 60 MM	
	PFL	CATALOG NUMBER	PFL	CATALOG NUMBER	PFL	CATALOG NUMBER	PFL	CATALOG NUMBER	PFL	CATALOG NUMBER	PFL	CATALOG NUMBER
50	25	MLP20-50	25	MLP25-50								
60	25	MLP20-60	25	MLP25-60								
70	25	MLP20-70	25	MLP25-70	25	MLP30-70						
80	25	MLP20-80	25	MLP25-80	25	MLP30-80						
90	25	MLP20-90	25	MLP25-90	25	MLP30-90	35	MLP40-90				
100	25	MLP20-100	25	MLP25-100	25	MLP30-100	35	MLP40-100				
120	35	MLP20-120	35	MLP25-120	35	MLP30-120	35	MLP40-120				
140	35	MLP20-140	35	MLP25-140	35	MLP30-140	35	MLP40-140				
150									45	MLP50-150	60	MLP60-150
160	45	MLP20-160	35	MLP25-160	35	MLP30-160	35	MLP40-160				
175									45	MLP50-175	60	MLP60-175
180	45	MLP20-180	45	MLP25-180	45	MLP30-180	45	MLP40-180				
200	45	MLP20-200	45	MLP25-200	45	MLP30-200	45	MLP40-200	45	MLP50-200	60	MLP60-200
220	45	MLP20-220	45	MLP25-220	45	MLP30-220	45	MLP40-220				
225									45	MLP50-225	60	MLP60-225
240	45	MLP20-240	45	MLP25-240	45	MLP30-240	45	MLP40-240				
250									45	MLP50-250	60	MLP60-250
260			45	MLP25-260	45	MLP30-260	45	MLP40-260				
275									45	MLP50-275	60	MLP60-275
280			45	MLP25-280	45	MLP30-280	45	MLP40-280				
300			45	MLP25-300	45	MLP30-300	45	MLP40-300	45	MLP50-300	60	MLP60-300
325									45	MLP50-325	60	MLP60-325
350									45	MLP50-350	60	MLP60-350
375									45	MLP50-375	60	MLP60-375
400									45	MLP50-400	60	MLP60-400